



ankox
sealing engineering

Waterproofing systems
for concrete structures



CATALOGUE 2018
ENGLISH

X-PERT

in waterproofing constructions

Waterproofing buildings is where ankox's expertise lies – one of Germany's leading manufacturers of waterproofing systems for concrete structures. As experts in this field, the company from Swabia, Southern Germany, always comes into play when building elements that are in contact with the ground require professional and permanent sealing. This applies to traditional surface and subsurface structural engineering but also to building restoration and to civil engineering, i.e. tunnels and large-scale projects.

ankox - the experts in waterproof construction

Productoverview

Active waterproofing membrane

Page 5 – 8

1

Single-component sealant mass

Page 9 – 12

2

Metal waterstop systems

Page 13 – 27

3

Injection hose systems

Page 28 – 47

4

Injection grouts + appliances

Page 48 – 53

5

Hydrophilic water stops

Page 54 – 63

6

Joint sealing profiles

Page 62 – 67

7

Article lists

Page 68 – 71

8

X-PERT

in waterproofing constructions

ankox GmbH sealing engineering

Blumenstraße 42/1

71106 Magstadt

GERMANY

PHONE +49(0)7159 42 008 40

E-MAIL export@ankox.de

WEB www.ankox.de

Status 10. 2018

Liability

ankox GmbH reserves the right to supplement or change, at any time, the information or data currently displayed in this catalogue without prior notice. Great care has been taken into putting this information together. Despite thorough monitoring, we cannot guarantee that the information supplied is free of errors. Please note that the colours and forms displayed in the images may vary from the original subjects.



Polyfleece SX[®] 1000

Polyfleece SX[®] 1000 is a high quality seal fleece with a swellable coating containing modified polymers. The chemical composition of the coating makes it start to expand when getting on contact with water (swelling rate appr. 150%).

Polyfleece SX[®] 1000 is applied as external, pre- or postapplied waterproofing membrane, as holohedral seal or as linear seal of connection joints. Due to its especial characteristics the membrane integrally bonds to concrete which prevents any undergo of humidity between the concrete and the membrane. All concrete surfaces in under & over ground civil engineering and tunneling engineering constructions can be sealed with **Polyfleece SX[®] 1000**.

Polyfleece SX[®] 1000 can be used for bonding to fresh concrete as a pre-applied waterproofing membrane:

Polyfleece SX[®] 1000 is laid out on the substrate with its coated side facing the blinding layer or it will be fixed with its coated side towards the formwork in wall constructions. The position of the reinforcement is directly on the uncoated side of the seal fleece, concrete is then poured on to this uncoated side of Polyfleece SX[®] 1000, which will suck up a part of the concrete water. By doing so it integrally bonds to the concrete. This function prevents any undergo of water between sealing membrane and concrete effectively.



1

2

3

4

5

6

7

8



Polyfleece SX® 1000 Wall

Polyfleece SX® 1000 Wall is a high quality seal fleece with a swellable coating containing modified polymers and a double-sided with PP-fleece concealed LDPE-foil. The chemical composition of the coating makes it start to expand when getting on contact with water (swelling rate appr. 150%), once the protective LDPE-coat has been damaged by mechanical attack.



Application





Polyfleece SX[®] 1000 Radon

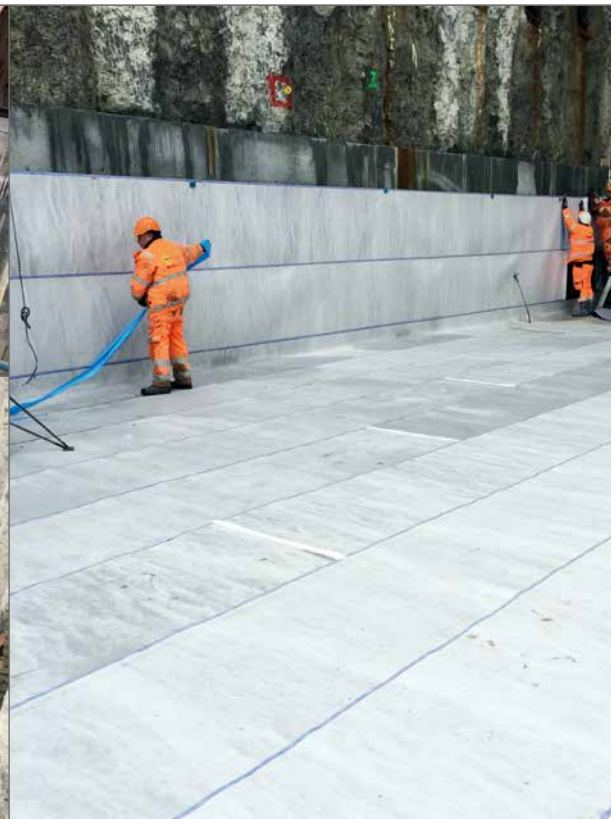
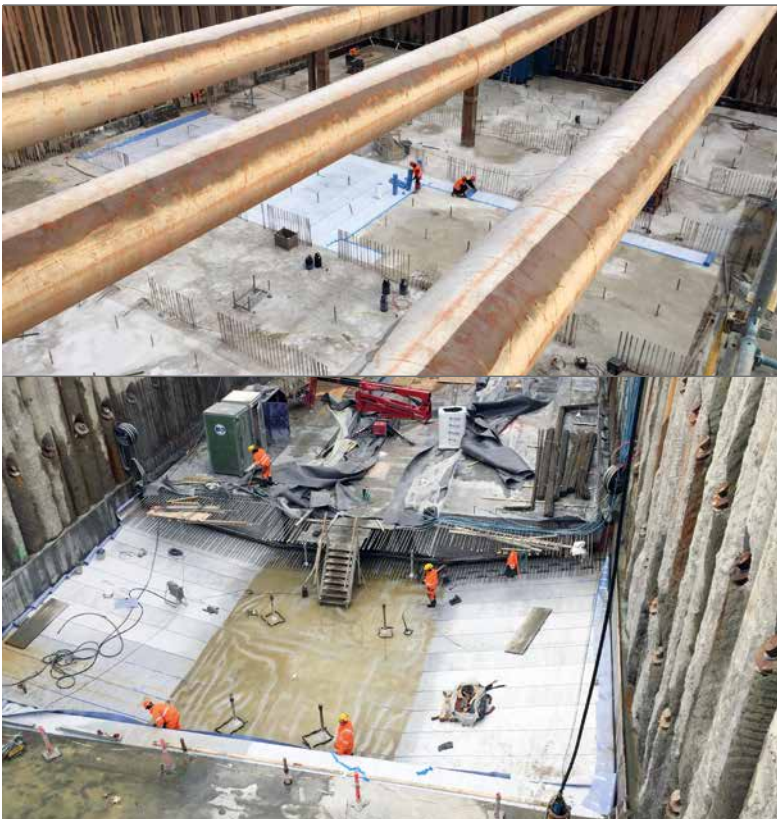
Polyfleece SX[®] 1000 Radon is tight against Radon gas.

Radon is a colorless, radioactive, inert gaseous element formed by the radioactive decay of radium. A natural source of radiation found in most soils and ground-water, radon poses a serious health threat if inhaled.

Pollution of indoor air, due to the radioactive inert gas Radon can be reduced to save levels by using **Polyfleece SX[®] 1000 Radon**.



Application



1

2

3

4

5

6

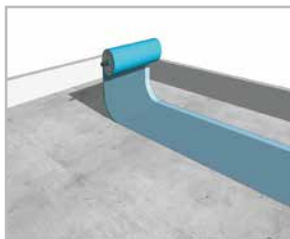
7

8

Installation



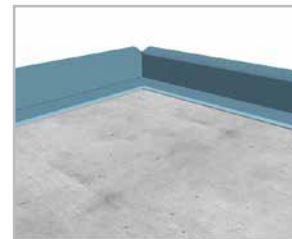
Preparation of a base according to DIN 1045-2
Compacted, clean planum.
Concrete subbase according to DIN EN 206-1
and DIN 1045-2.



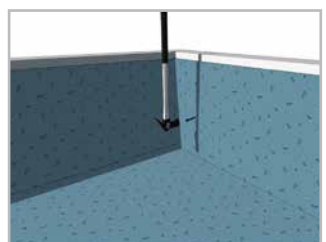
Roll out of Polyfleece SX[®] 1000-roll
1,0 x 20,0 m.



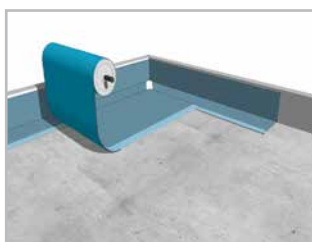
Fitting and securing of the manually prepared Polyfleece SX[®] 1000-stripe along the side formwork (width of stripe depending on height of side formwork PLUS 10 cm horizontal overlap). The horizontal overlap must be at least 10 cm.



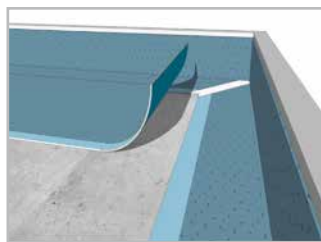
Connection slab-wall: to connect the slab-fleece to the vertical wall-fleece at a later stage a min. 20.0 cm-overlap is left beyond the slab formwork. The overlap must be kept free from contamination!



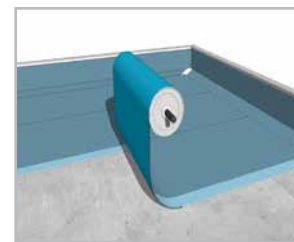
Mechanical fixing of the manually prepared Polyfleece SX[®] 1000-strips on the side formwork.



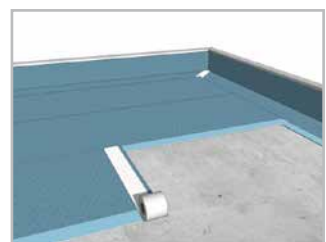
On horizontal surface connection of 1.0 x 20.0-sheets onto the previously on side formwork installed Polyfleece SX[®] 1000-strips.



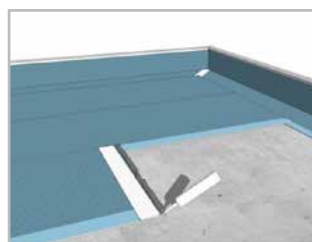
75 mm overlap with preassembled Polyfleece SX[®] 1000 adhesive tape. Please notice: The PE-Foil at the backside of the membrane has to be removed where the overlap will be created!



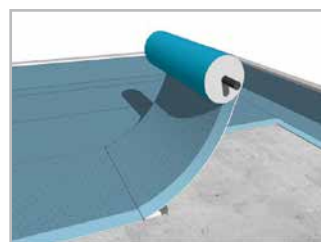
Installation of Polyfleece SX[®] 1000-rolls roll by roll. Regularly all seams have to be carried out with the self-adhesive tape which is mechanically preassembled.



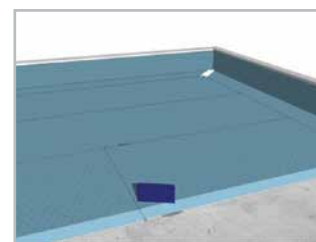
If that is not possible following procedure must be carried out:
At corner and/or cross-/T-overlaps the self-adhesive Polyfleece SX[®] 1000-tape 75 mm is assembled at about 25 mm from the frontside leaving a 25mm fleece-strip open.
Subsequently removal of the protection foil.



Additional bonding of the open fleece edge stripe with Polymer-swellingspaste SX[®] 100.



After the PE-foil has been removed on the Polymer-coated side the new roll which must be connected is overlapped with 100 mm covering both the self-adhesive tape and the Polymer-swellingspaste SX[®] 100.



The roll which is connected is gently pressed on with a spatula. Surplus Polymer-swellingspaste SX[®] 100 will leak on both edges.

Polyfleece SX[®] 1000 postapplied

Alternatively Polyfleece SX[®] 1000 can be post applied to existing structures. To ensure the sealing of existing buildings the fleece side faces in the direction of the construction. Polyfleece SX[®] 1000 is installed with 2K-sealing adhesive SX1 on the concrete surface.



PACKAGING

Polyfleece SX[®] 1000
Polyfleece SX[®] 1000 Wall
Polyfleece SX[®] 1000 Radon

20.0 m width 1.0 m; 25 rolls per 20.0 m; 500.0 m²/pallet
20.0 m width 1.0 m; 20 rolls per 20.0 m; 400.0 m²/pallet
20.0 m width 1.5 m



FlexproofX[®] 1

1-COMPONENT SEALANT

**ORIGINALLY
PROVED**

AbP

STEKOX[®]



FlexproofX[®] 1 is a single-component sealant mass specially designed for sealing reinforced concrete structures.

Reinforced concrete parts that are continuously exposed to water can be sealed safely and permanently with **FlexproofX[®] 1**, because the special composition of **FlexproofX[®] 1**, which is based on a patented, prepolymer mixture, allows practically no water absorption to take place even with continuous water exposure.

The reactive process of **FlexproofX[®] 1**, in particular with hydroxyl groups, makes **FlexproofX[®] 1** the ideal, permanent sealant for reinforced concrete structures.

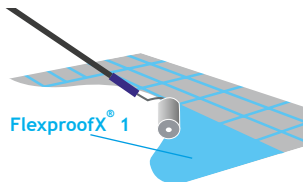
With regard to materials that have no free hydroxyl groups (e.g. metal, glass, etc.), the reactive process of **FlexproofX[®] 1** is brought about by humidity. It is irrelevant however, as to whether the supply of water is obstructed or not as humidity will be present or will exist at least in an adjacent substrate.

As a result, non-mineral materials can also be perfectly sealed with **FlexproofX[®] 1**.

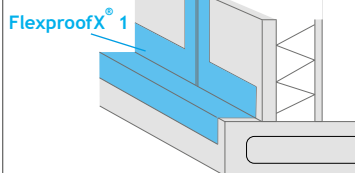
In addition to the special adaptability of the composition, particular praise must also be given to the sealant's high bending and adhesive tensile strength values. As a result, cracks and joints (tested to 5mm at 4 bar) as well as surfaces can be permanently sealed.

The usability of **FlexproofX[®] 1** is verified for each application by building authority test certificates (AbP). An AbP certificate has also been issued for its installation with/without reinforcement fabric, as an exterior, strip form sealant for construction joints/crack control joints and as a total surface exterior sealant.

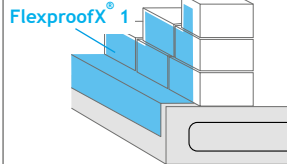
Balcony renovation/
bonding membranes



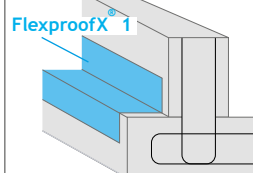
Prefab walls



Brickwork



In-situ concrete



ADVANTAGES

- _ Specially developed for sealing reinforced concrete structures
- _ High resistance against the alkalinity of the concrete
- _ Ideal for permanently sealing structural parts with ground contact
- _ No primer required
- _ 1 component, therefore ready to use, no mixing
- _ Bonds to almost all sub-surfaces
- _ Dries completely and very quickly, rainproof after only a few minutes
- _ Highly flexible, therefore highly adept at bridging cracks
- _ Non-sensitive to weather
- _ Bonds to damp and cold sub-surfaces
- _ Easy to apply with a roller or brush, or a scraper, spraying device or cartridge gun
- _ Very economical
- _ Isocyanate free
- _ Officially approved: Building authority test certificates (AbP) for exterior, strip form/full surface sealing of construction joints/crack control joints with/without reinforcement fabric with regard to cast-in-place concrete/component wall constructions

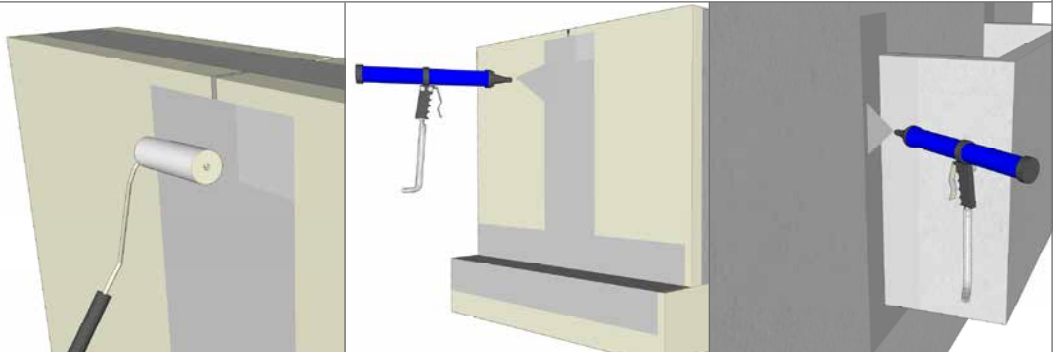
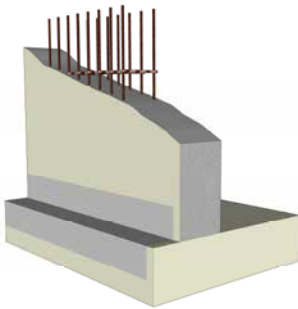
PACKAGING

FlexproofX [®] 1 firm:	15 kg 26 kg
FlexproofX [®] 1 spray:	600 ml tube
FlexproofX [®] 1 NV low viscosity:	7.5 kg
FlexproofX [®] 1:	290 ml cartridge (12 cartridges per carton)
	600 ml tube
FlexproofX [®] 1 NV:	290 ml cartridges (12 cartridges per carton)



FlexproofX[®] 1 firm

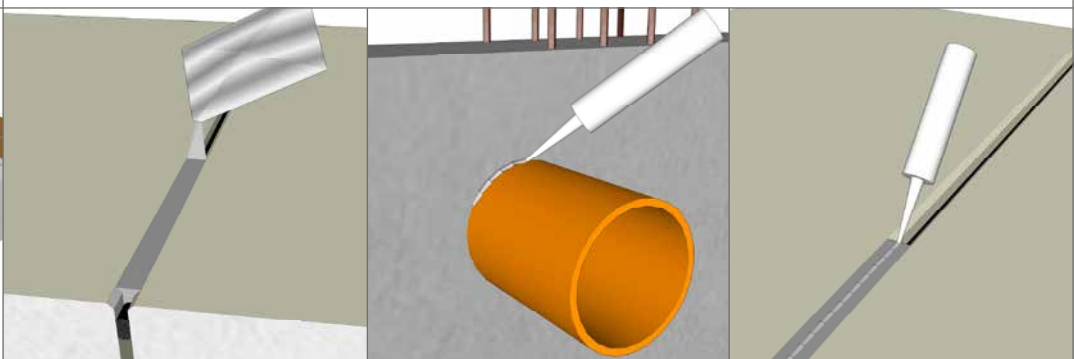
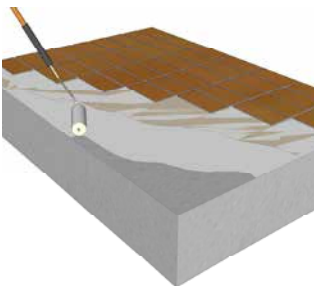
FlexproofX[®] 1 firm has a special viscosity allowing it to be applied to both horizontal and vertical surfaces as well as to surfaces above the head, using a roller, brush or trowel.



FlexproofX[®] 1 sprayable

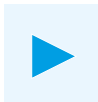
FlexproofX[®] 1 spray is sprayed on to the concrete surface using the specially designed **FlexproofX[®] 1 spray gun**.

Depending on the application (exposure grade, utilisation grade) **FlexproofX[®] 1 spray** can be applied in one or two coats. If two coats are to be applied the specially designed **FlexproofX[®] 1 reinforcement fabric** is to be laid between the two coats.



FlexproofX[®] 1 NV low viscous

The low viscous sealant **FlexproofX[®] 1 NV** can be easily applied with a roller or simply poured into place. Due to its self-levelling abilities **FlexproofX[®] 1 NV** lends itself perfectly to being used on horizontal surfaces (e.g. balcony work, water vapour barrier, etc.). Also **FlexproofX[®] 1 NV** resists negative water pressure without any problem.



FlexproofX[®] 1 is available in a range of different viscosities allowing it to be applied simply regardless of the situation.



FlexproofX[®] 1 cartridge material

FlexproofX[®] 1 UV cartridge material

FlexproofX[®] 1/FlexproofX[®] 1 UV cartridge material is a high quality, 1-component sealing and bonding material with a short hardening time (full hardening: 3mm per 24 hours, skin formation after 10 to 15 minutes). Due to its high Shore durometer value it is particularly resilient to atmospheric influences and chemical attacks. **FlexproofX[®] 1 UV** cartridge material offers particularly high resistance to atmospheric conditions especially against UV radiation (comprehensive test certificate).



1

2

3

4

5

6

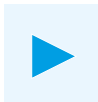
7

8



<p>MFLA Leipzig GmbH Anerkannte Prüfstelle für Baustoffe, Bauteile und Bauarten PÜZ-Stelle nach Landesbauordnung (SAC 02), Bauproduktengesetz (NB 0802)</p> <p>DAKKS Deutsche Anerkennungsgesellschaft D-PL 13022-05-00</p> <p>Durch die DAKKS GmbH nach DIN EN ISO/IEC 17025 akkreditiertes Prüfzentrum. Die Akkreditierung gilt für die in der Urkunde aufgeführten Prüfverfahren, welche unter www.mfla-leipzig.de eingesehen werden kann.</p> <p>MFLA</p> <p>Geschäftsbereich V – Tiefbau Geschäftsbereichsleiter: Prof. Dr.-Ing. Olf Siele Arbeitsgruppe 5.1 – Bauwerksabdichtung</p> <p>Untersuchungsbericht UB 5.1/10-230</p>	<p>MFLA Leipzig GmbH Anerkannte Prüfstelle für Baustoffe, Bauteile und Bauarten PÜZ-Stelle nach Landesbauordnung (SAC 02), Bauproduktengesetz (NB 0802)</p> <p>DAKKS Deutsche Anerkennungsgesellschaft D-PL 13022-05-00</p> <p>Durch die DAKKS GmbH nach DIN EN ISO/IEC 17025 akkreditiertes Prüfbereichs- zentrum. Die Akkreditierung gilt für die in der Urkunde aufgeführten Prüfverfahren.</p> <p>MFLA</p> <p>Geschäftsbereich V – Tiefbau Geschäftsbereichsleiter: Prof. Dr.-Ing. Olf Siele Arbeitsgruppe 5.1 – Bauwerksabdichtung</p> <p>Prüfbericht</p>
<p>Gegenstand: MFLA Leipzig GmbH Prof., Überwachungs- und Zertifizierungsstelle für Baustoffe, Bauprodukte und Baustysteme Geschäftsbereich V - Tiefbau Prof. Dr.-Ing. Olf Siele Arbeitsgruppe 5.1 - Bauwerksabdichtung</p> <p>Auftraggeber:</p> <p>Bearbeiter:</p> <p>Probeneinreichung:</p> <p>Prüfzeitraum:</p> <p>Dieser Unter- bericht bedeutet die schriftliche Anerkennung der Gesellschaft für das Bauwesen Geschäftsbereich V - Tiefbau Arbeitsgruppe 5.1 - Bauwerks- abdichtung</p> <p>Allgemeines bauaufsichtliches Prüfzeugnis</p> <p>Prüfzeugnis Nummer: P-SAC 02 / 5.1 / 13 – 334/1</p> <p>Gegenstand: FlexproofX 1 <i>einkomponentige Dichtmasse zur außenliegenden Abdichtung von Arbeitsfugen in Bauteilen aus Beton mit ho- hem Wassereindringwiderstand gegen drückendes und nicht drückendes Wasser und gegen Bodenfeuchtigkeit gemäß Bauregelliste A, Teil 2, lfd. Nr. 2.53, Ausgabe 2013/2</i></p> <p>Antragsteller: StekoX GmbH Abdichtungstechnik Blumenstraße 42/1 D - 71106 Magstadt</p> <p>Erstausstellung: 28.11.2008</p> <p>Verlängerung: 28.11.2013</p> <p>Geltungsdauer: 27.11.2018</p> <p>Dieses allgemeine bauaufsichtliche Prüfzeugnis besteht aus 7 Seiten.</p> <p>Dieses allgemeine bauaufsichtliche Prüfzeugnis darf nur ungekürzt vervielfältigt werden. Eine Vervielfältigung – auch auszugs- weise – bedarf der vorherigen schriftlichen Zustimmung der MFLA Leipzig GmbH. Als rechtsverbindliche Form gilt die deutsche Schriftform mit Originalunterschriften und Originalstempel des/der Zeichnungsberechtigten.</p> <p>Es gelten die Allgemeinen Geschäftsbedingungen (AGB) der MFLA Leipzig GmbH.</p> <p>DAKKS Deutsche Anerkennungsgesellschaft DIN 13022-05-00</p> <p>Durch die DAKKS GmbH nach DIN EN ISO/IEC 17025 akkreditiertes Prüfbereichs- zentrum. Die Akkreditierung gilt für die in der Urkunde aufgeführten Prüfverfahren (in diesem Dokument mit „geprüft“ bezeichnet). Die Urkunde kann unter www.mfla-leipzig.de eingesehen werden. Nach Landesbauordnung (SAC 02) anerkannte und nach Bauproduktengesetz (NB 0802) notifizierte PÜZ-Stelle.</p> <p>Gesellschaft für Materialprüfung und Prüfungen für das Bauwesen Leipzig GmbH (MFLA Leipzig GmbH) Stb. Geschäftsbereich: Leipzig/Germany Hauptgeschäftsbereich: Prof. Dr.-Ing. Frank Dahn Anlagenstr. 109B 17719 05 41 3305659 +49 (0) 341 - 6582-143 +49 (0) 341 - 6582-189</p>	<p>Gegenstand: MFLA Leipzig GmbH Prof., Überwachungs- und Zertifizierungsstelle für Baustoffe, Bauprodukte und Baustysteme Geschäftsbereich V - Tiefbau Prof. Dr.-Ing. Olf Siele Arbeitsgruppe 5.1 - Bauwerksabdichtung</p> <p>Auftraggeber:</p> <p>Bearbeiter:</p> <p>Probeneinreichung:</p> <p>Prüfzeitraum:</p> <p>Dieser Unter- bericht bedeutet die schriftliche Anerkennung der Gesellschaft für das Bauwesen Geschäftsbereich V - Tiefbau Arbeitsgruppe 5.1 - Bauwerks- abdichtung</p> <p>Allgemeines bauaufsichtliches Prüfzeugnis</p> <p>Prüfzeugnis Nummer: P-SAC 02 / 5.1 / 13 – 334/2</p> <p>Gegenstand: FlexproofX 1 <i>einkomponentige Dichtmasse zur außenliegenden Abdichtung von Sollmischungsquerschnitten in Bauteilen aus Beton mit hohem Wassereindringwiderstand gegen drückendes und nicht drückendes Wasser und gegen Bodenfeuchtigkeit gemäß Bauregelliste A, Teil 2, lfd. Nr. 2.53, Ausgabe 2013/2</i></p> <p>Antragsteller: StekoX GmbH Abdichtungstechnik Blumenstraße 42/1 D - 71106 Magstadt</p> <p>Erstausstellung: 27.11.2008</p> <p>Verlängerung: 27.11.2013</p> <p>Geltungsdauer: 26.11.2018</p> <p>Dieses allgemeine bauaufsichtliche Prüfzeugnis besteht aus 7 Seiten.</p> <p>Dieses allgemeine bauaufsichtliche Prüfzeugnis darf nur ungekürzt vervielfältigt werden. Eine Vervielfältigung – auch auszugs- weise – bedarf der vorherigen schriftlichen Zustimmung der MFLA Leipzig GmbH. Als rechtsverbindliche Form gilt die deutsche Schriftform mit Originalunterschriften und Originalstempel des/der Zeichnungsberechtigten.</p> <p>Es gelten die Allgemeinen Geschäftsbedingungen (AGB) der MFLA Leipzig GmbH.</p> <p>DAKKS Deutsche Anerkennungsgesellschaft DIN 13022-05-00</p> <p>Durch die DAKKS GmbH nach DIN EN ISO/IEC 17025 akkreditiertes Prüfbereichs- zentrum. Die Akkreditierung gilt für die in der Urkunde aufgeführten Prüfverfahren (in diesem Dokument mit „geprüft“ bezeichnet). Die Urkunde kann unter www.mfla-leipzig.de eingesehen werden. Nach Landesbauordnung (SAC 02) anerkannte und nach Bauproduktengesetz (NB 0802) notifizierte PÜZ-Stelle.</p> <p>Gesellschaft für Materialprüfung und Prüfungen für das Bauwesen Leipzig GmbH (MFLA Leipzig GmbH) Stb. Geschäftsbereich: Leipzig/Germany Hauptgeschäftsbereich: Prof. Dr.-Ing. Frank Dahn Anlagenstr. 109B 17719 05 41 3305659 +49 (0) 341 - 6582-143 +49 (0) 341 - 6582-189</p>

Please request the complete set of our latest test certificates.



AquaproofX[®] 1 is a coated metal waterstop system for the internal sealing of construction joints and crack inducing joints. Our objective of introducing innovative products to expand the company's range of sealing systems has lead to the development of **AquaproofX[®] 1**. This innovative metal waterstop excels in particular through its reliability, quality and cost effectiveness. Our modern production centre allows us to manufacture and assemble all 'special order' dimensions.

GENERAL CHARACTERISTICS

- _ Strip length: 2.0 m/strip (special length according to specs available)
- _ Packaging unit: 30.0 m/bundle, 900.0m/pallet
- _ Roll length: 6.0 m/roll
- _ Packaging units: Set 6.0 m roll, 6 x Omega fixing bracket, 2 x push bracket, 504.0 m/pallet
Set 2 x 6.0 m rolls, 8 x metal waterstop fixing clip, 4 x push bracket, 576.0 m/pallet
- _ Width: 140.0 mm

FUNCTION

The joint sealing element **AquaproofX[®] 1** features a highly adhesive, reactive polymer coating on one of its sides. In this coating the dipole molecules cause a permanent watertight connection to be formed with the surrounding concrete. The extremely high adhesive qualities in combination with the dipolar effect offer a double dose of security. A time consuming kicker joint upstand is not necessary. Due to the intermolecular forces an extremely strong bond between the polymer coat and the concrete takes place. The **AquaproofX[®] 1** metal waterstop, tested to 7 bar, (test report) is resistant to all types of organic wastewater. With the use of a special connector, the connection with expansion joints is possible without any problems.

AREA OF APPLICATION

All typical construction joints and crack inducing joints:
Base/base, base/wall, wall/wall, wall/ceiling, ceiling/ceiling.



ADVANTAGES

- _ General Building Supervisory Test Certificate (embedment depth 30 mm)
- _ General Building Supervisory Test Certificate - Control Joints (prefab wall 0.5 mm/site-mixed concrete 1.0 mm)
- _ No premature surface activity due to its specially developed polymer coating
- _ Extremely high bonding characteristics between the polymer coating and the surrounding concrete due to dipolar molecular forces
- _ Storing and installation not subject to changes in weather (-20°C - +70°C)
- _ Simple installation process
- _ Specially designed bending clips (50 % saving / no fixing wire)
- _ Building related special lengths / dimensions possible on request
- _ Embedment depth according to required utilisation class

Please request our detailed datasheet and test certificates.

1

2

3

4

5

6

7

8



ASSEMBLY: SITE-MIXED CONCRETE

AquaproofX[®] 1 is installed with the coated side facing the direction of probable water infiltration.

The embedment depth in the first concrete section must be at least 3 cm. (→ Embedment depth according to required utilisation class).

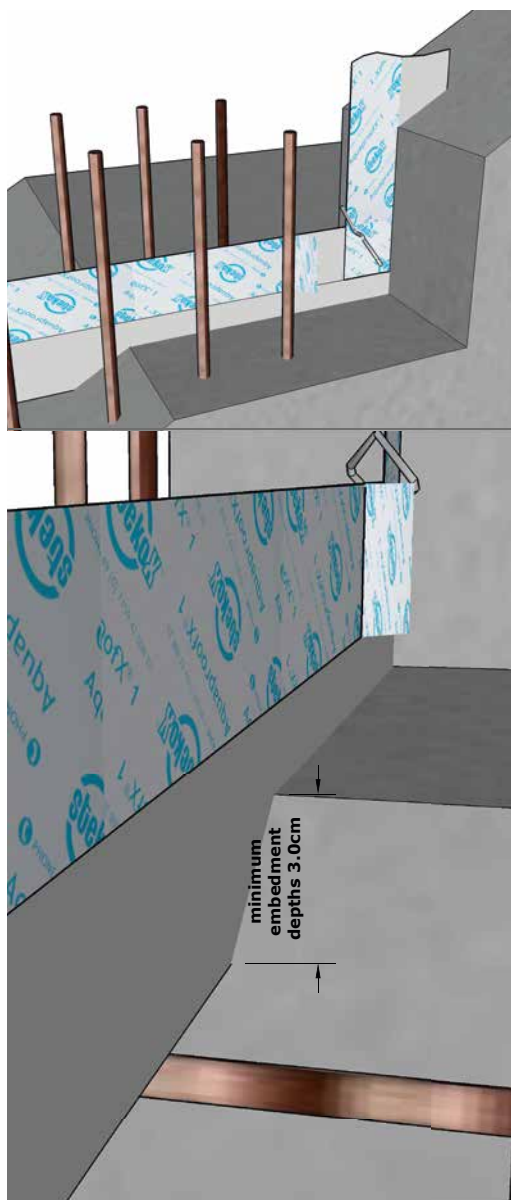
The installation of **AquaproofX[®] 1** takes place before concreting and is positioned vertically in the middle of the joint between the reinforcement rods.

At points where the end of one element meets another, the metal waterstops are to overlap each other by approx. 5 cm. Once the protective foil has been removed (in the overlapping area) the ends are pressed firmly together and secured from above and below with a joining clip.

Once the bottom protective foil has been completely removed, the metal waterstop is secured with an Omega bending clip at 50 cm intervals to prevent it from moving or rising up during concreting. As an alternative to the Omega clip, **AquaproofX[®] 1** can be secured with a newly designed fixing clip at maximum 1.0m-intervals. The fixing end is simply fed around the reinforcement rods and pinched tight with pliers. The metal waterstop is bent by hand to allow it to follow the course of the joint (corners, curves).

Connecting the waterstop strips at a vertical and horizontal joint is carried out after the protective foil has been removed. The metal waterstop strips are connected to each other by pressing them firmly together. The connection is additionally secured by attaching two joining clips to the sides.

The protective foil must be fully removed before pouring the second section of concrete.

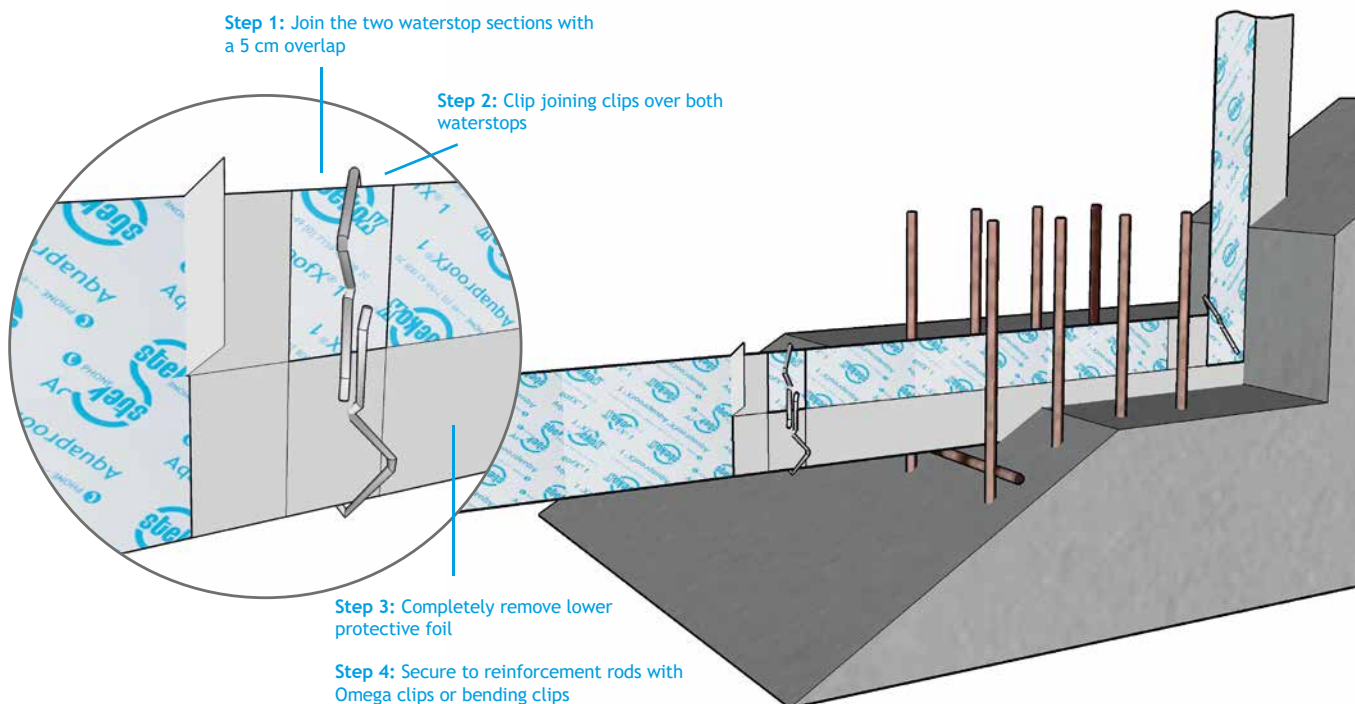


Step 1: Join the two waterstop sections with a 5 cm overlap

Step 2: Clip joining clips over both waterstops

Step 3: Completely remove lower protective foil

Step 4: Secure to reinforcement rods with Omega clips or bending clips





ASSEMBLY: PREFAB WALLS

Aquaproof[®]X 1 is installed with the coated side facing the direction of probable water infiltration.

The embedment depth in the first concrete section must be at least 3 cm. (→ Embedment depth according to required utilisation class). The installation of **Aquaproof[®]X 1** takes place before concreting and is positioned vertically in the middle of the joint between the reinforcement rods.

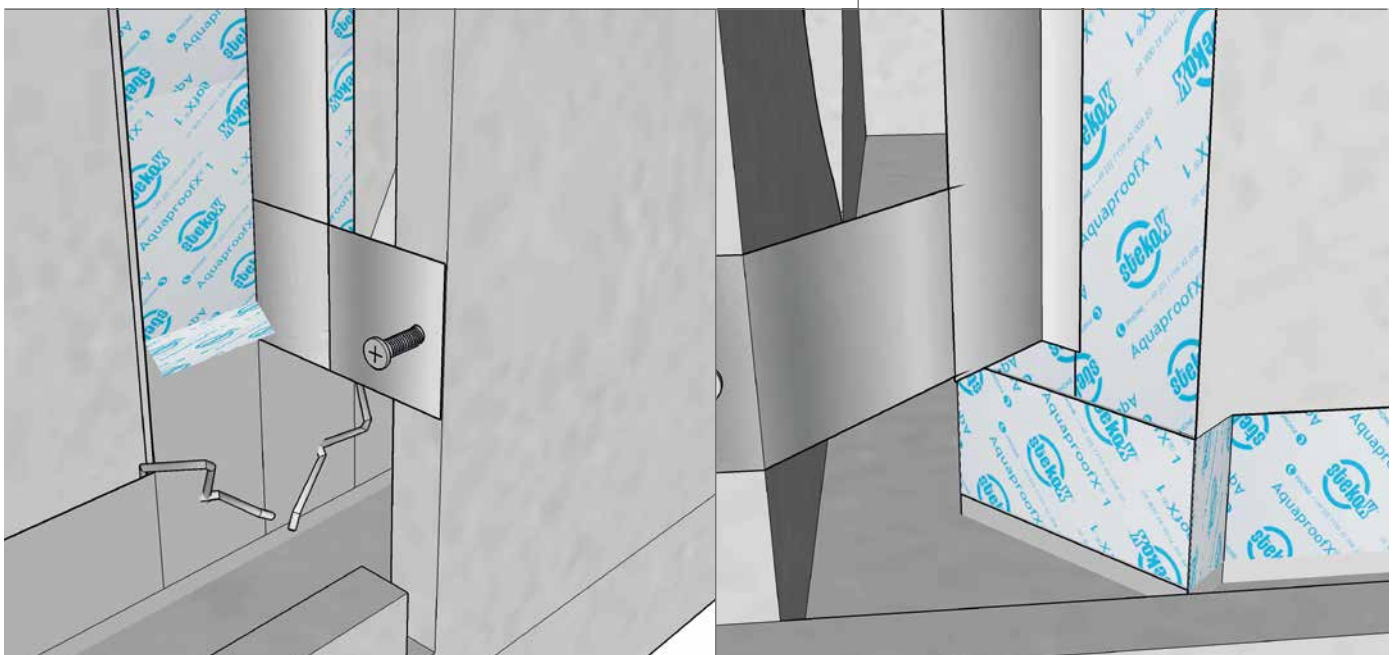
At points where the end of one element meets another, the metal waterstops are to overlap each other by approx. 5 cm. Once the protective foil has been removed (in the overlapping area) the ends are pressed firmly together and secured from above and below with a joining clip.

Once the bottom protective foil has been completely removed, the metal waterstop is secured with Omega bending clips at 50 cm intervals or with a newly designed fitting clip at maximum 2.0 m-intervals to prevent it from moving or rising up during concreting. The metal waterstop is bent by hand to allow it to follow the course of the joint (corners, curves).

In a control joint, the waterstop is secured in place with pre-mounted fixing strips. The fixing strips are to be arranged in the area of the anticipated control joint.

Connecting the waterstop strips at a vertical and horizontal joint is carried out after the protective foil has been removed. The metal waterstop strips are connected to each other by pressing them firmly together. The connection is additionally secured by attaching two joining clips to the sides.

The protective foil must be fully removed before pouring the second section of concrete.



1

2

3

4

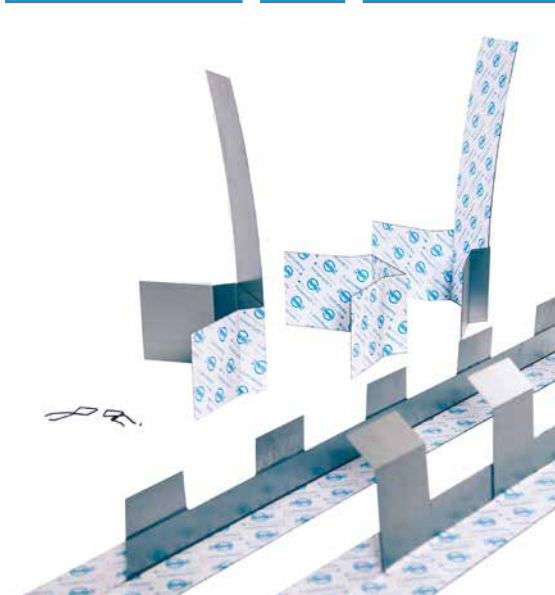
5

6

7

8

crack control element aquaproofX[®] 1



Creating and sealing crack-control joints

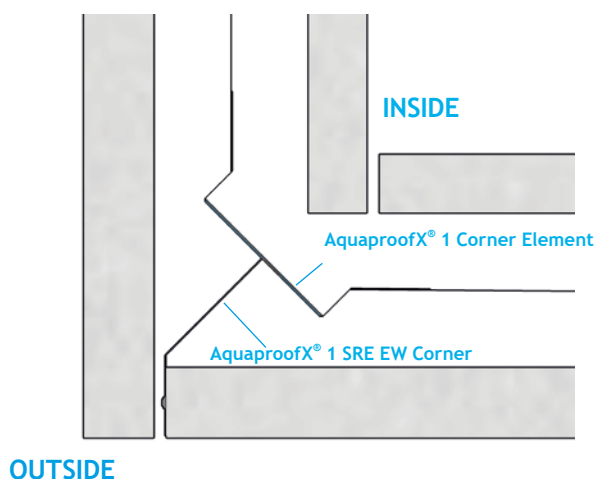
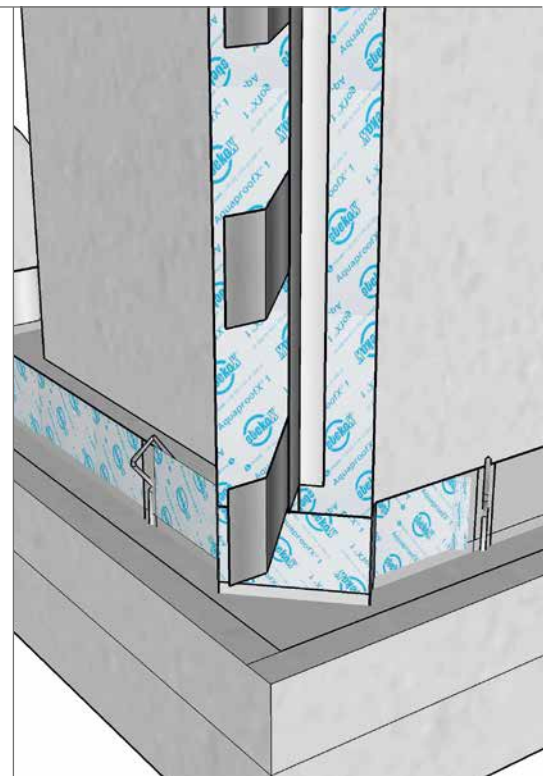
AquaproofX[®] 1 SRE crack-control elements are used to create crack-control sections in prefabricated walls and site-mixed concrete. The cross-sectional weakness caused by the crack-control element (in combination with internally and externally arranged trapezoidal strips for site-mixed concrete) results in the formation of controlled cracks.

The specially induced cracks strike the centre of the certified and approved **AquaproofX[®] 1** metal waterstop which is positioned in the middle of the wall. This results in the crack-control sections being sealed permanently and reliably against pressurized and non-pressurized water.

AquaproofX[®] 1 SRE EW (prefab wall):

The metal waterstop is securely fixed in place in a vertically-running joint (by definition a “crack-control joint”) of a prefab wall with fixing strips that have been pre-mounted on the infiltration side of the joint (min. fixing strip width: 7.5 cm, max. distance between strips: 15 cm). The fixing strips are to be arranged in the area of the anticipated control joint. The length of the fixing strips or brackets is determined by the thickness of the wall.

- _ AquaproofX[®] 1 SRE EW Joint (Wall thickness 24 / 29; 30 / 35)
- _ AquaproofX[®] 1 SRE EW EW Corner (Wall thickness 24 / 29; 30 / 35)

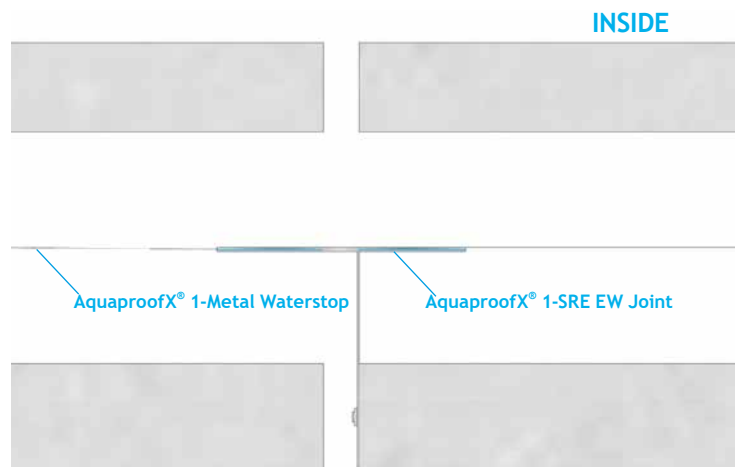


OUTSIDE

INSIDE

AquaproofX[®] 1 Corner Element

AquaproofX[®] 1 SRE EW Corner



INSIDE

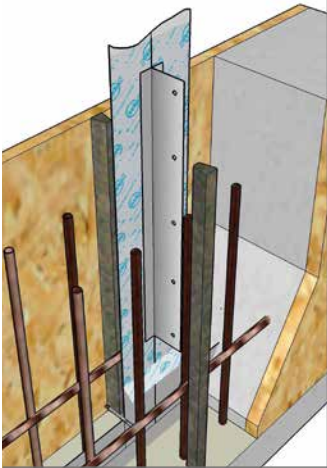
AquaproofX[®] 1-Metal Waterstop

AquaproofX[®] 1-SRE EW Joint

OUTSIDE



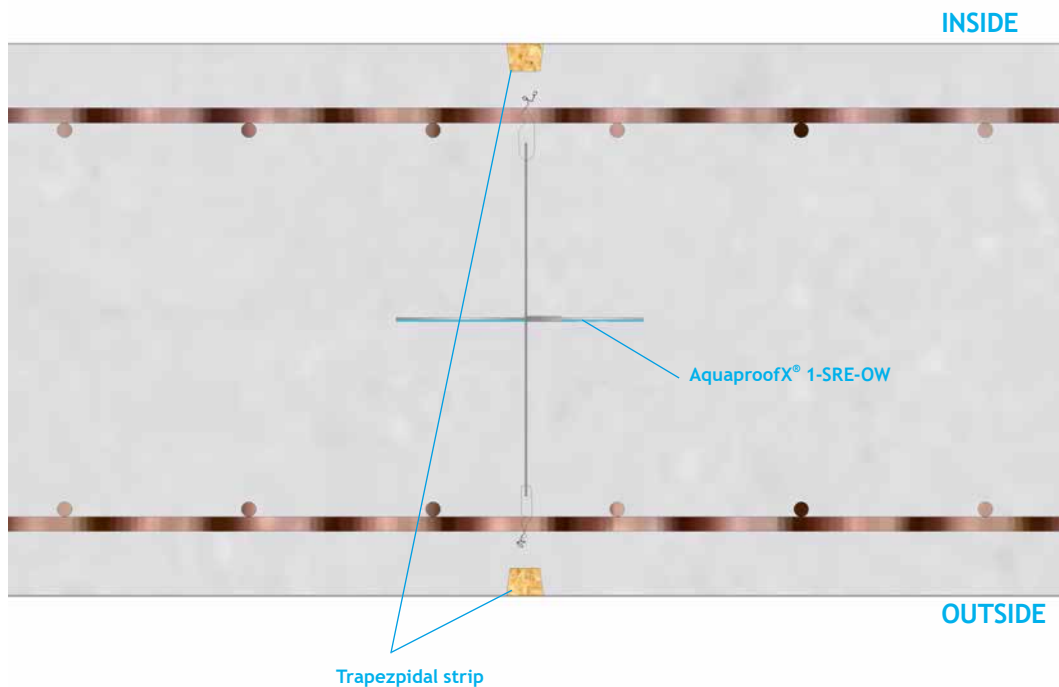
crack control element aquaproofX® 1



AquaproofX® 1 SRE OW (Site-mixed concrete):

In order to install the **AquaproofX® 1** crack-control elements in site-mixed concrete integrated brackets can be found on both sides of the metal waterstop which can be secured to both sides of the reinforcement bars. The length of the brackets is determined by the wall thickness.

_ **AquaproofX® 1 SRE OW** (Wall thickness 24 / 29; 30 / 35)



Please request the detailed data sheet and test certificates.





M F P A Leipzig GmbH
Anerkannte Prüfstelle für Baustoffe, Bauteile und Bauarten
PÜZ-Stelle nach Landesbauordnung (SAC 02), Bauproduktengesetz (NB 0800)

Deutscher
Akreditierungs
Rat
DAP-PL-4077.00

Durch die DAP GmbH nach DIN EN ISO/IEC 17025 akkreditiertes Prüflaboratorium. Die Akkreditierung gilt für die in der Urkunde aufgeführten Prüfverfahren.

Geschäftsbereich II – Konstruktiver Ingenieurbau
Geschäftsbereichsleiter: Prof. Dr.-Ing. Olaf Selle
Arbeitsgruppe 2.2 – Bauwerksabdichtung

Prüfbericht
PB 2.2/07-040/2

vom 27.07.2008

Gegenstand: Prüfung Fugenblech Bauregelleiste

Auftraggeber: StekoX Markgräf 71701 S

Prüfzeitraum: April bis

Bearbeiter: Dipl.-Ing.

Dieser Prüfbericht umfasst 10 Seiten und

Dieser Prüfbericht darf nur ungekürzt vervielfältigt werden. Als rechtsverbindliche Form gilt die deutsche Schriftform mit Originalunterschriften und Originalstempel des/der Zeichnungsberechtigten.

Gesellschaft für Materialprüfung und Prüfungsanstalt für das Bauwesen Leipzig mbH
Geschäftsführer: Prof. Dr.-Ing. Frank Dahn
Stz.: Hans-Weigen-Str. 20 - D - 04319 Leipzig
Telefon: +49 (0) 341 65 52-140
Fax: +49 (0) 341 65 52-199
E-Mail: abteilung@mfpa-leipzig.de

M F P A Leipzig GmbH
Anerkannte Prüfstelle für Baustoffe, Bauteile und Bauarten
PÜZ-Stelle nach Landesbauordnung (SAC 02), Bauproduktengesetz (NB 0800)

Deutscher
Akreditierungs
Rat
DAP-PL-4077.00

Durch die DAP GmbH nach DIN EN ISO/IEC 17025 akkreditiertes Prüflaboratorium. Die Akkreditierung gilt für die in der Urkunde aufgeführten Prüfverfahren.

Geschäftsbereich V – Tiefbau
Geschäftsbereichsleiter: Prof. Dr.-Ing. Olaf Selle
Arbeitsgruppe 5.1 – Bauwerksabdichtung

Prüfbericht
PB 5.1/08-220/2

1. von 3 Ausfertigungen

M F P A Leipzig GmbH
Prüf-, Überwachungs- und Zertifizierungsstelle für Baustoffe, Bauprodukte und Baustysteme
Geschäftsbereich V – Tiefbau
Prof. Dr.-Ing. Olaf Selle
Arbeitsgruppe 5.1 – Bauwerksabdichtung

Allgemeines bauaufsichtliches Prüfzeugnis

Prüfzeugnis Nummer: P-SAC 02 / 5.1 / 15 - 219

Gegenstand: Fugenblech Aquaproof[®] X 1 - mit Kunststoffbeschichtung einseitig voll beschichtetes Fugenblech zur innenliegenden Abdichtung von Arbeitsfugen für Bauteile aus Beton mit hohem Wassereindringwiderstand gemäß Bauregelleiste A, Teil 2, ffd. Nr. 2.53, Ausgabe 2014/2

Antragsteller: StekoX GmbH Abdichtungstechnik Blumenstraße 42/1 D - 71106 Magstadt

Erstausstellung: 19.12.2008

Verlängerung: 29.07.2015

Geltungsdauer: 28.07.2020

Dieses allgemeine bauaufsichtliche Prüfzeugnis besteht aus 7 Seiten.

Dieses allgemeine bauaufsichtliche Prüfzeugnis darf nur ungekürzt vervielfältigt werden. Als rechtsverbindliche Form gilt die deutsche Schriftform mit Originalunterschriften und Originalstempel des/der Zeichnungsberechtigten.

Es gelten die Allgemeinen Geschäftsbedingungen (AGB) der MFPA Leipzig GmbH.

Durch die Dakks GmbH nach DIN EN ISO/IEC 17025 akkreditiertes Prüflaboratorium. Die Akkreditierung gilt für die in der Urkunde aufgeführten Prüfverfahren (in diesem Dokument mit "akkreditiert" bezeichnet). Die Urkunde kann unter www.mfpa-leipzig.de eingesehen werden.
Nach Landesbauordnung (SAC 02) anerkannte und nach Bauproduktengesetz (NB 0800) notifizierte PÜZ-Stelle

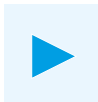
Gesellschaft für Materialprüfung und Prüfungsanstalt für das Bauwesen Leipzig mbH (MFPA Leipzig GmbH)

Stz.: Hans-Weigen-Str. 20 - 04319 Leipzig/Germany
Geschäftsführer: Prof. Dr.-Ing. Frank Dahn
Handelsregister: Amtsgericht Leipzig HRB 17719
USt-Id-Nr.: DE 81320549
Tel.: +49 (0) 341 - 6505-140
Fax: +49 (0) 341 - 6505-199

Handelsregister: Amtsgericht Leipzig HRB 17719
Ust.-Nr.: DE 81320549
Bankverbindung: Sparkasse Leipzig Kto.-Nr. 1100 960 781 BLZ 860 555 92

Handelsregister: Amtsgericht Leipzig HRB 17719
Ust.-Nr.: DE 81320549
Bankverbindung: Sparkasse Leipzig Kto.-Nr. 1100 960 781 BLZ 860 555 92

Please request the complete set of our latest test certificates.



EasyproofX[®] 1 is a metal waterstop system that simply, quickly and securely seals joints between two concrete sections. One side of the strip features a flexible adherent layer with a granular coating. Due to the favourable physical form of the strip's rough surface a sound bonding is guaranteed between the **EasyproofX[®] 1** sealing elements and the surrounding concrete. Constructing a time-consuming foundation curb is also not necessary.

EasyproofX[®] 1 has a wide range of possibilities for the user particularly with regard to making the installation process more economical (reduction in installation errors, time saving, etc.). It also provides planners and architects with the highest degree of security due to the numerous test certificates that it has acquired.

The installation process has also been simplified with the introduction of a newly designed fixing arrangement. Other advantages include its total immunity to all kinds of weather. This applies to both storage and installation. Rain, snow and high and low temperatures have no effect on the metal waterstop system itself or its impermeability.

GENERAL CHARACTERISTICS

_ Strip length:	2.0 m/strip
_ Packaging unit:	30.0 m/bundle, 900.0 m/pallet
_ Roll length:	6.0 m/roll
_ Packaging units:	Set 6.0 m roll, 6x Omega fixing bracket, 2x push bracket, 504.0 m/pallet Set 2 x 6.0 m rolls, 8x metal waterstop fixing clip, 4x push bracket, 576.0 m/pallet
_ Width:	140.0 mm



The bonding properties of the flexible granular surface on the **EasyproofX[®] 1** waterstop provide an extremely reliable deterrent against the infiltration of water and air.

That is why an embedment depth of 3 cm (minimum) is sufficient for the **EasyproofX[®] 1** waterstop to withstand a constant head of water. (➤ Embedment depth according to required utilization class).

The **EasyproofX[®] 1** strip is resistant to all organic wastewater.

Connecting the strip to an expansion joint is a straight forward procedure with the special connector.

1

2

3

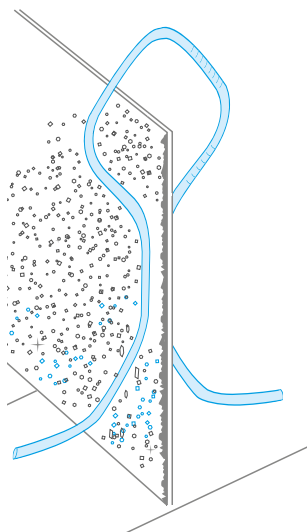
4

5

6

7

8



Omega fixing clip

FIELD OF APPLICATION

All typical construction joints.
Suitable for site-mixed concrete and prefab walls.

SIMPLE INSTALLATION

EasyproofX[®] 1 is to be positioned along the middle of the joint (base to base, base to wall, wall to wall, wall to ceiling, ceiling to ceiling), running parallel to the reinforcing rods, and fixed in place with the ready-made fixing clips.

EasyproofX[®] 1 sections are joined together with an overlap. The amount of overlap should be the same width as the attached connecting strip. This is then secured with a joining clip from above and below.

INSTALLATION

EasyproofX[®] 1 is installed with the granulated surface facing the side where water will attempt to infiltrate. The embedment depth in the first concrete section must be at least 3 cm. (Embedment depth according to required utilisation class).

EasyproofX[®] 1 is vertically installed along the middle of the joint running parallel to the reinforcing rods before concreting takes place. Both storage and installation processes are not affected by atmospheric conditions. The strip can be easily bent by hand in order to follow the course of the joint (corners and curves).

EasyproofX[®] 1 sections are joined together with an overlap corresponding to the width of the attached connecting strip. This is then secured with a joining clip from above and below.

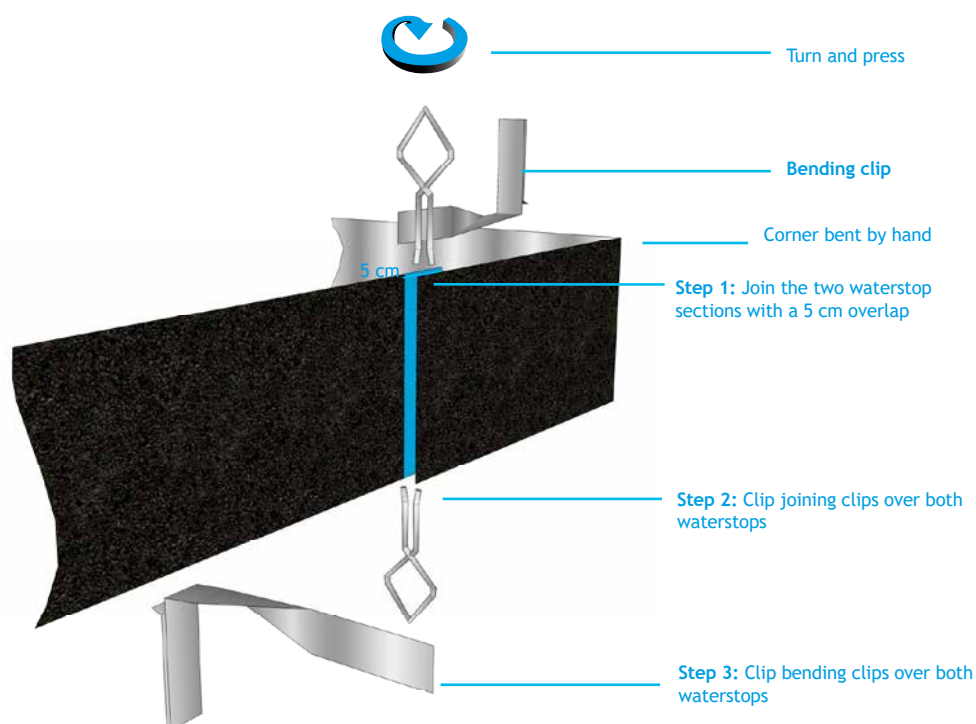
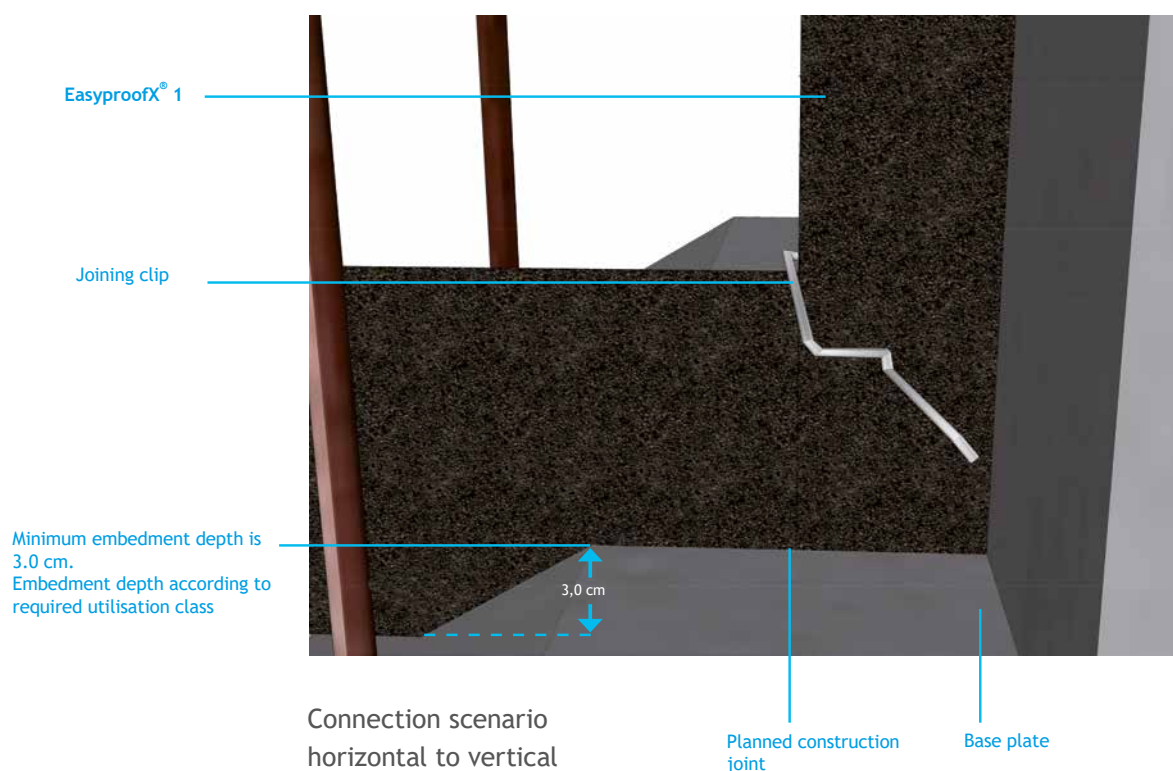
The problems associated with removing a protective strip does not apply to **EasyproofX[®] 1**.

The metal waterstop is fixed in place with the new fixing bracket or with bending clips to guard against moving, lifting, etc. during concreting.

ADVANTAGES

- _ No protective strip to be removed
- _ No premature surface swelling, due to its specially designed construction
- _ Storage and installation are not affected by atmospheric conditions
- _ Simple installation process
- _ Specially designed bending clip
- _ Available in a variety of dimensions

Please request our detailed data sheet and test certificates.



1

2

3

4

5

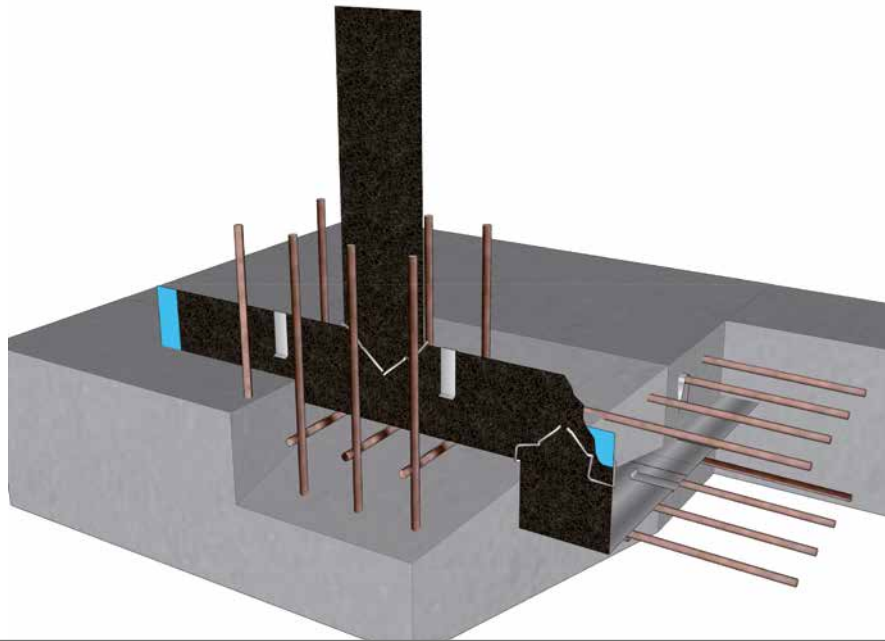
6

7

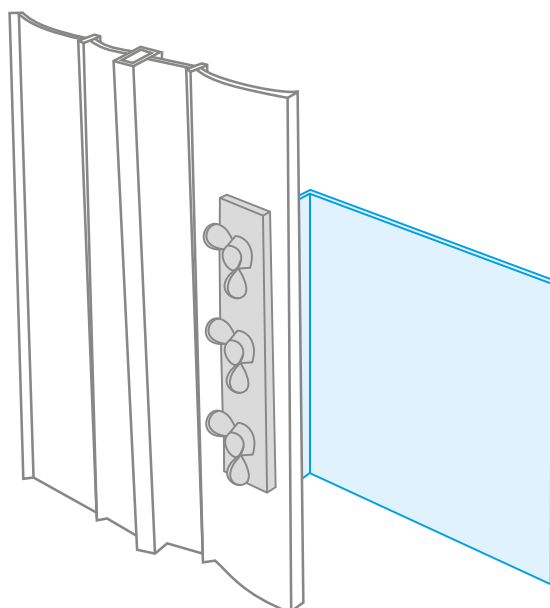
8



Applications for Easyproof[®] X 1
Scenario: Cast-in-place concrete sections



Connected to another waterstop







Prüfbericht – Nr. 20040904

von

Gegenstand: Prüfen in Bezug Verbur

Auftraggeber: StekoX Markg 71701

Bearbeiter: Dipl.-Ing. Bautek

Dieser Prüfbericht umfasst 13 S der BBQ Bautechnik in Baden-

MFPFA Leipzig GmbH
Prüf-, Überwachungs- und Zertifizierungsstelle nach Landesbauordnung (SAC 02)



Bereich: Konstruktiver Ingenieurbau
Bereichsleiter: Univ.-Prof. Dr.-Ing. Stefan Winter
Arbeitsgruppe: Bauwerksabdichtung

Allgemeines bauaufsichtliches Prüfzeugnis

Prüfzeugnis Nummer:

Gegenstand:

Antragsteller:

Ausstellungsdatum:

Geltungsdauer bis:

Aufgrund dieses allgemeinen bauaufsichtlichen Prüfzeugnis im Sinne der Landesbauordnung (SAC 02) wird das allgemeine bauaufsichtliche Prüfzeugnis ausgestellt.

Gesellschaft für Materialforschung und Prüfungen für das Bauwesen Leipzig mbH
Sitz: Hans-Regel-Straße 2 b - 0431

Postanschrift: PF 24 11 08
04303 Leipzig
Telefon: 03 41 / 85 85 143
Fax: 03 41 / 85 82 190
e-Mail: abtechung@mfpfa-leipzig.de



MFPFA Leipzig GmbH
Prüf-, Überwachungs- und Zertifizierungsstelle für Baustoffe, Bauprodukte und Baustysteme
Geschäftsbereich V - Tiefbau
Prof. Dr.-Ing. Olaf Seile
Arbeitsgruppe 5.1 - Bauwerksabdichtung

Allgemeines bauaufsichtliches Prüfzeugnis

Prüfzeugnis Nummer: P-SAC 02 / 5.1 / 15 - 220

Gegenstand: Fugenblech Easyproof[®] 1 - mit Granulat auf flexibler Trägerbeschichtung einseitig voll beschichtetes Fugenblech zur innenliegenden Abdichtung von Arbeitsfugen für Bauteile aus Beton mit hohem Wassereindringwiderstand gemäß Bauregelliste A, Teil 2, ffd. Nr. 2.53, Ausgabe 2014/2

Antragsteller: StekoX GmbH Abdichtungstechnik
Blumenstraße 42/1
D - 71106 Magstadt

Erstausstellung: 28.09.2005


Verlängerung: 27.09.2015

Geltungsdauer: 26.09.2020

Dieses allgemeine bauaufsichtliche Prüfzeugnis besteht aus 7 Seiten.

Dieses allgemeine bauaufsichtliche Prüfzeugnis darf nur gekürzt vervielfältigt werden. Als rechtsverbindliche Form gilt die deutsche Schriftform mit Originalunterschriften und Originalstempel des/der Zeichnungsberechtigten.

Es gelten die Allgemeinen Geschäftsbedingungen (AGB) der MFPFA Leipzig GmbH.



Durch die DAKS GmbH nach DIN EN ISO 9001:2015 und DIN EN ISO 14001:2015 zertifiziert. Die Zertifizierung ist für die in der Urkunde aufgeführten Produktbereiche (in diesem Dokument mit "gelistet" bezeichnet). Die Urkunde kann unter www.daks.de eingesehen werden. Nach Landesbauordnung (SAC 02) anerkannte und nach Bautechnikgesetz (BtG 2004) notifizierte PÜZ-Stelle.

Gesellschaft für Materialforschung und Prüfungen für das Bauwesen Leipzig mbH (MFPFA Leipzig GmbH)

Sitz: Hans-Regel-Straße 2b - 04319 Leipzig/Germany

Geschäftsführer: Prof. Dr.-Ing. Frank Dohr

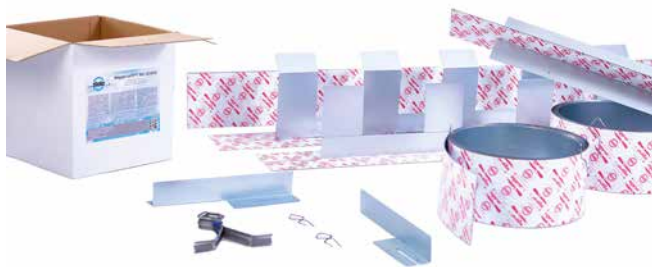
Vertretungsberechtigt: Amtsanwalt Leipzig 098 17719

USt-Id-Nr.: DE 815205468

Telefon: +49 (0) 341 - 8585 - 143

Fax: +49 (0) 341 - 8582 - 199

Please request the complete set of our latest test certificates.



MegaproofX[®] 1 is an internal water bar, one-sided coated over the entire surface for fast, simple and reliable sealing of construction and crack inducing joints.

The internal water bar has an adherent, reactive polymer coating on one of its sides which mechanically adheres to the fresh concrete at first instance and later starts to swell. Thereby a double waterproofing function is given, which means double secureness in terms of watertightness.

FUNCTION

The high bonding characteristics of the polymer coating and the swell pressure arising from the hydrophilic characteristics prevent the internal **MegaproofX[®] 1** water bar from being infiltrated.

As a result of this, fixation on the upper reinforcement layer is absolutely sufficient (an embedment depth of 3 cm is adequate) while assembling in a construction joint between basement slab and wall. A time consuming foundation kerb is not necessary.

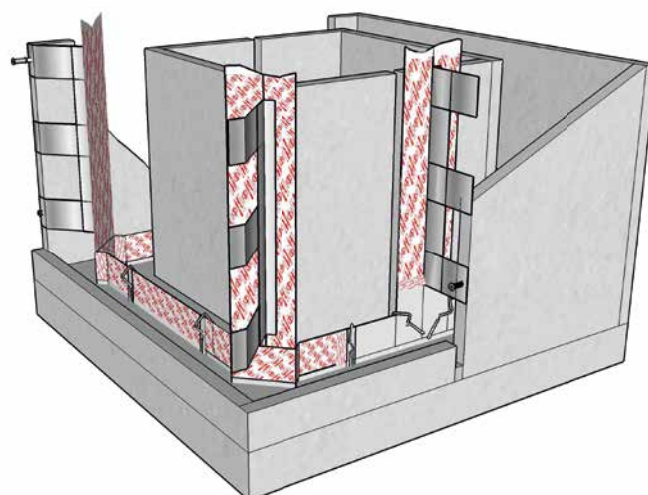
The metal water bar is fixed safely in its position with the Metal waterstop fixing bracket. At the overlap the metal strips are adhered to each other with an overlap of at least 5.0 cm. The overlap is secured with joining clips one from above and one from below.

Connecting to an expansion joint is a straight forward procedure with a special connector.



AREA OF APPLICATION

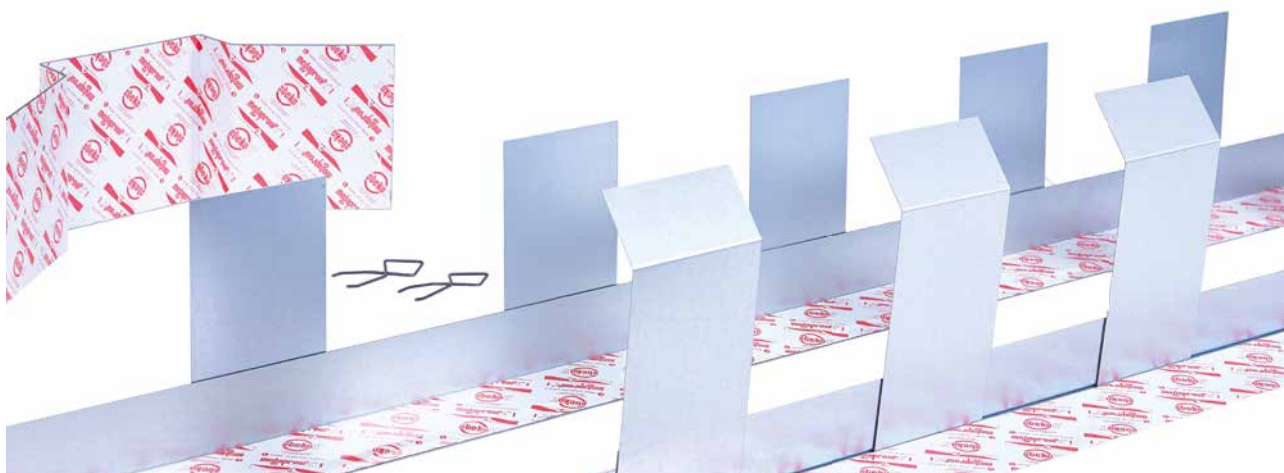
All typical construction joints:
suitable for all typical constructions- and crack inducing joints between base/base, base/wall, wall/wall, wall/ceiling, ceiling/ceiling.





megaproof[®] 1

ACTIVE METAL WATERSTOP SYSTEM



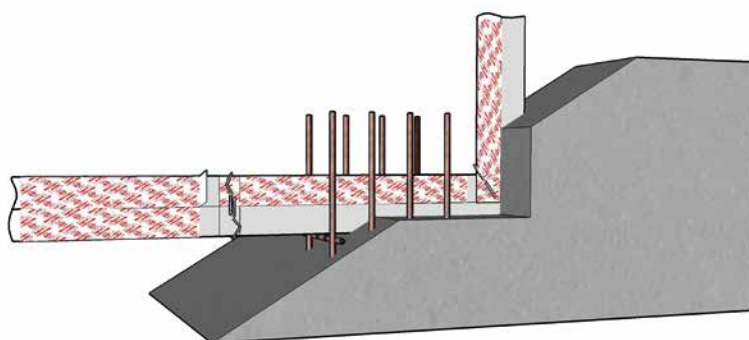
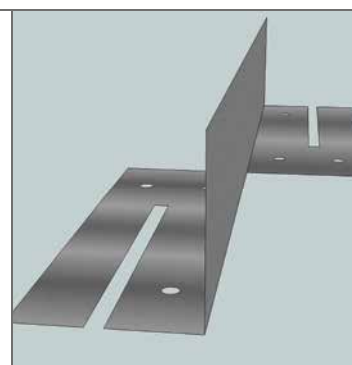
GENERAL CHARACTERISTICS

_Strip length:	2,0 m/strip (special length according to specs available)
_Packaging unit:	30.0 m/bundle - 900.0 m/pallet
_Roll length:	6.0 m/roll
_Packaging units:	Set 6.0 m/roll, 2 x push bracket, 504 m/pallet Set 2 x 6.0 m/roll, 8 x Metal waterstop fixing bracket, 4 x push bracket, 576.0 m/pallet
_Width:	140.0 mm
_Temperature resistance:	-20 °C/+70 °C

Accessories:

Item-no.13999

Metal waterstop fixing bracket



Please request the complete set of our latest test certificates.

stop end panel

WATERSTOP SYSTEM

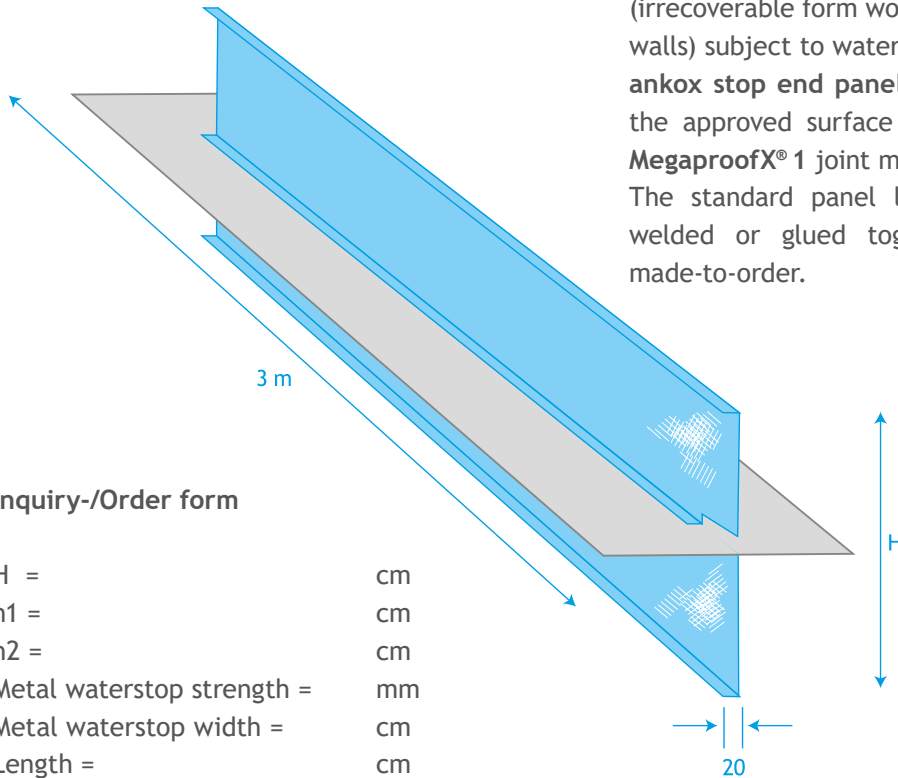


FLOOR / FLOOR STOP END PANEL

ankox stop end panels are composed of finely woven expanded metal (1.5 mm thick) with a welded-in joint metal plate. ankox stop end panels are inserted as stop ends (irrecoverable form work) for construction joints (base plates / walls) subject to water load.

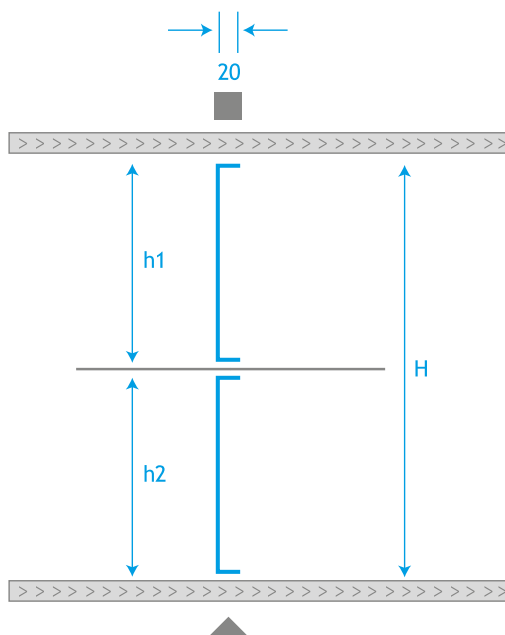
ankox stop end panels can be delivered either bare or with the approved surface inspection of the **AquaproofX® 1** and **MegaproofX® 1** joint metal plate system.

The standard panel length is 3.00 metres. Joints can be welded or glued together. ankox stop end panels are made-to-order.

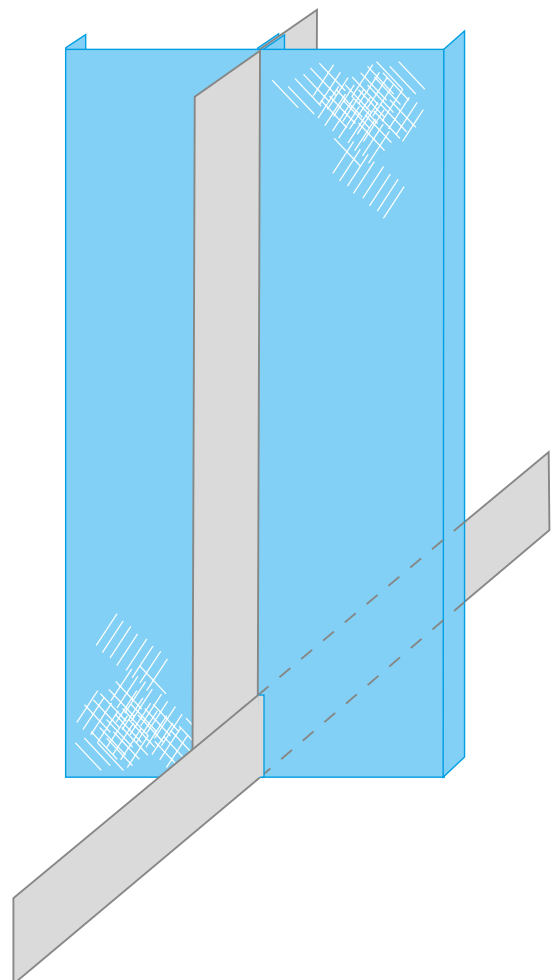


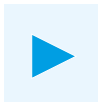
Inquiry-/Order form

H = cm
 h1 = cm
 h2 = cm
 Metal waterstop strength = mm
 Metal waterstop width = cm
 Length = cm
 Quantity = Pc.
 Coating = ☐ AquaproofX1® ☐ MegaproofX1® ☐ None



WALL / WALL STOP END PANEL





stop end panel

WATERSTOP SYSTEM

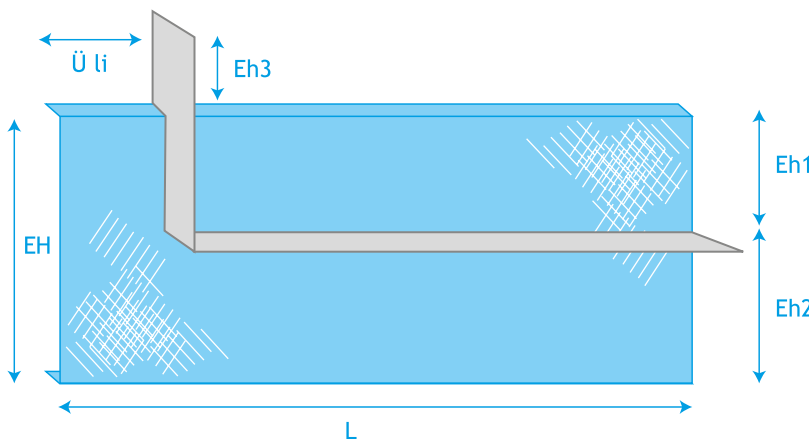
INSTALLATION

ankox stop end panels in base plates (horizontal mounting) und Wänden are self-supporting up to a height of 30cm. For heights of over 30cm, a conventional support to take the pressure of the concrete is necessary.

The **ankox stop end panels** is placed between the reinforcement layers and secured with the help of a binding wire or by welding.



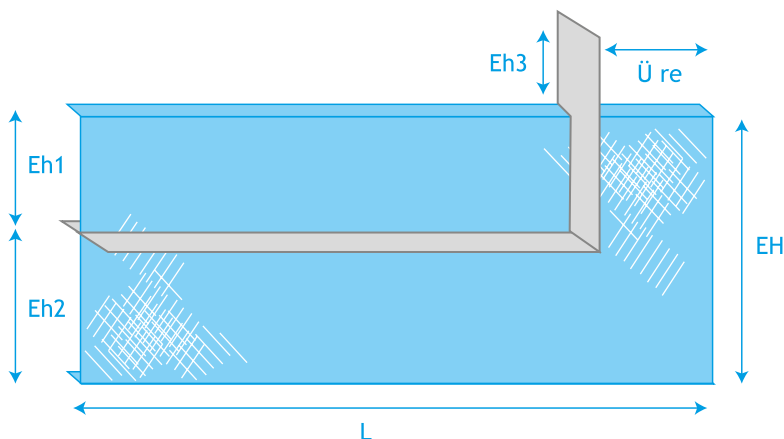
LEFT CORNER ELEMENT



Left Corner element

CH = cm
 CH1 = cm
 CH2 = cm
 CH 3 = cm
 Overlap = cm
 Metal waterstop width = cm
 Metal waterstop strength = cm
 Length = cm
 Quantity = Pc.
 Coating =
☐ AquaproofX1® ☐ MegaproofX1®
☐ None

RIGHT CORNER ELEMENT



Right Corner element

CH = cm
 CH1 = cm
 CH2 = cm
 CH 3 = cm
 Overlap = cm
 Metal waterstop width = cm
 Metal waterstop strength = cm
 Length = cm
 Quantity = Pc.
 Coating =
☐ AquaproofX1® ☐ MegaproofX1®
☐ None

1

2

3

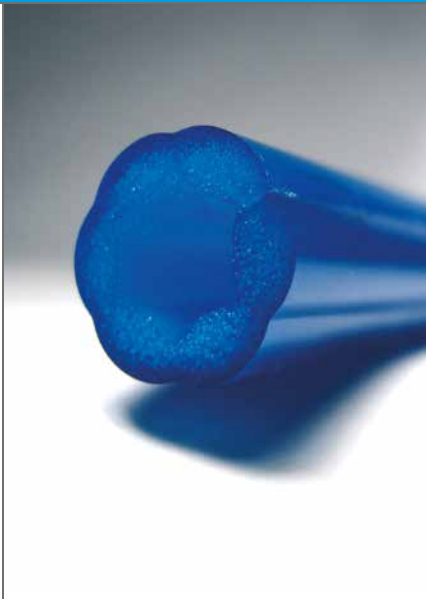
4

5

6

7

8

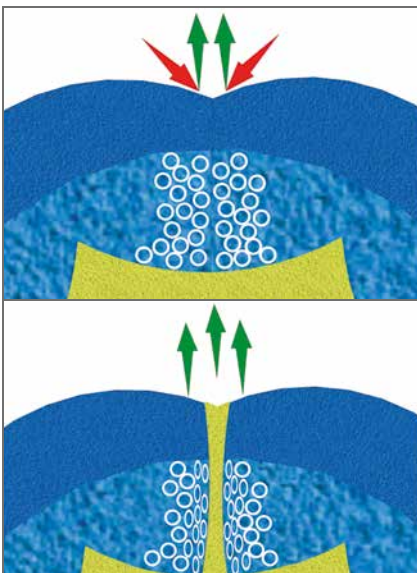
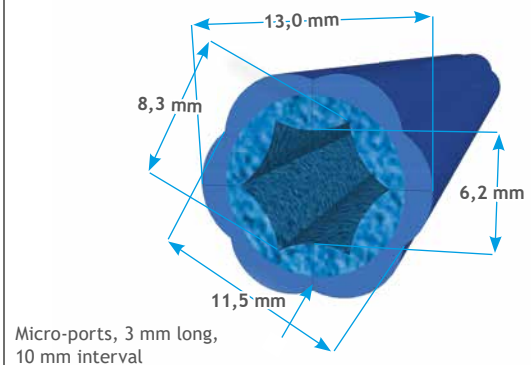
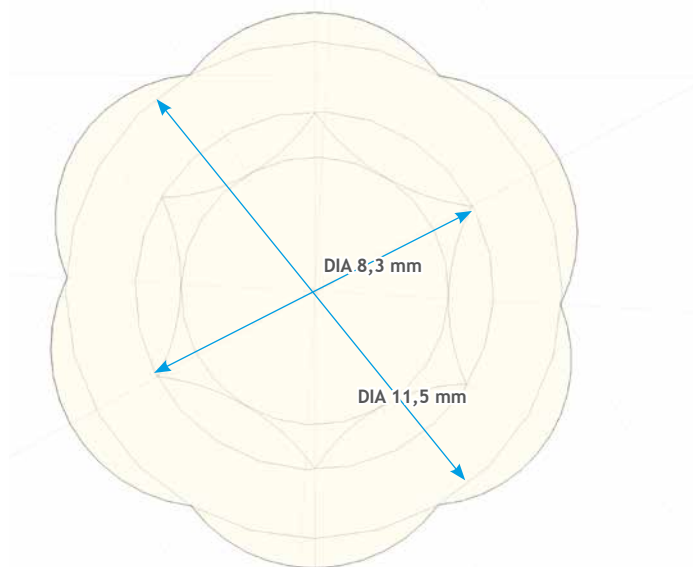


WaterproofX[®] 100 – directional design

WaterproofX[®] 100 is the first injection hose to perfectly unite the positive attributes of a round injection hose with the advantages of a fully flush-lying system due to the outwardly curving contact surfaces.

In addition to the stability of the WaterproofX[®] 100 injection hose, resulting from its cross-sectional area, the economic efficiency of this hexagonal injection system is particularly prominent.

This is because hexagonal cavities have the best wall-to-volume ratio of any type of cell form linked in series.



ADVANTAGES DUE TO EXCELLENT TECHNICAL REFINEMENT

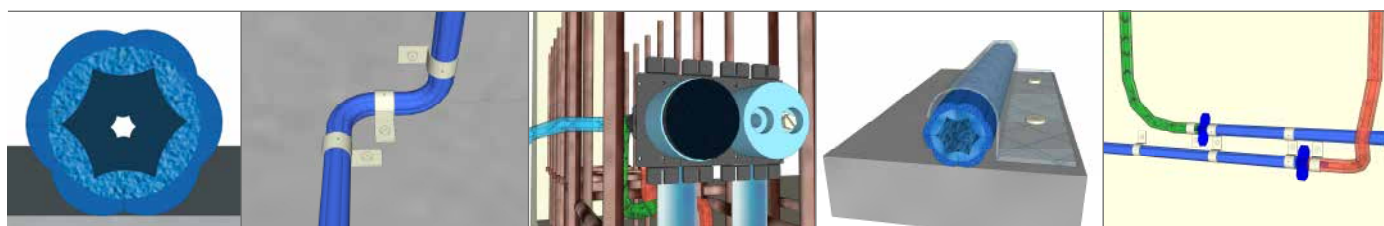
- _ Round injection hose with flush surface contact
- _ Multi-injection possible
- _ No limitations on the choice of injection material
PUR-foam, PUR-resin, epoxy resin, polymer gel matrix, cement
- _ Exclusive prefab accessories and assembly accessories
- _ Best surface-to-volume ratio
- _ Test certificates for multi-injection, cement injection & PUR-resin injection
- _ Long sections also possible (tested up to 30.0 m)



During the development of the ingenious **WaterproofX[®] 100** injection system featuring the unique, hexagonal cross-section, nature among other things served as an example.

If one observes, for example, a beehive made up of honeycombs the following principles apply:

A honeycomb is one cell in a pattern of two-dimensionally arranged hexagonal cavities. As a result, the hexagonal cavities have the best surface-to-volume ratio of all possible cell forms linked in series.



ASSEMBLY

The sub-surface must be flat, free of loose particles and must not feature any sharp-edged rises. Before laying the hose, ice particles must be allowed to thaw and standing water as well as cement silt is to be removed.

The standard hose length is between 8 and 12 m. Longer sections are possible and trouble-free.

WaterproofX[®] 100 must be laid out flat on the first section of concrete.

WaterproofX[®] 100 is secured with hose clips or a fixing mesh. The distance between the clips or the mesh fixing points should be between 10 and 15 cm. In certain situations the distance will have to be reduced accordingly.

WaterproofX[®] 100 is best laid in the middle of the wall.

The distance from the **WaterproofX[®] 100** injection hose to the outer edge of the joint must be at least 10 cm.

In areas where two hose ends meet they should overlap each other by 15 cm running parallel with a 3 to 5 cm gap between the two.

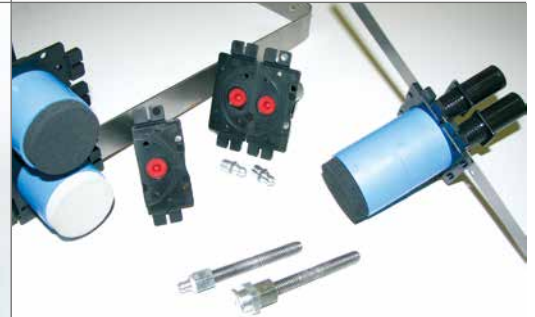
Checks must be made to ensure that to the **Varioclix[®]** connections can be accessed at all times.





INJECTION

- _ Fill the injection channel fully with injection material.
- _ Close the Varioclix®.
- _ Pressure will build-up due to the material being distributed throughout the injection system.
Micro-ports will open at low pressure (1 bar).
Injection material will be discharged into the areas requiring injection.



- _ Due to the pore structure which was optimally created in the hose's production process, infiltration by cement water following the injection process or during the concrete pour is not possible.
- _ Due to the relaxing of the hose's casing (it was compressed during injection), the micro-ports will close again once injection has taken place. The injection channel can now be flushed out without the threat of injection material seeping back into the injection hose.
- _ The flushing process allows the system to be re-injected at anytime.

GENERAL CHARACTERISTICS

Profile: **hexagonal**
 Colour: **transparent blue**
 External diameter: **13 mm**
 Internal diameter: **8.3 mm**
 Metre marking interval: **1 m**

Micro-port dimensions
 Length: **3 mm**
 Spacing interval: **approx. 10 mm**

PACKAGING

Coil: **120 m**
 Palett: **3360 m**

Please request our detailed data sheet and test certificates.



WPX100 set

40 Meter

WPX100 SET

The **WPX100 SET** offers price-conscious joint sealing combined with utmost safety.

The technical applications of **WaterproofX® 100** have been tested by the MFPA Leipzig GmbH (Institute for Material Research & Testing in the Building Industry).

Test certificate No. AbP B-SAC 02/5.1/14-092

ADVANTAGES

- _ General Building Supervisory Test Certificate for **WaterproofX® 100**
- _ Simple to install
- _ Easy to handle 10 m sections
- _ Economical to work with
- _ Including simple assembly accessories

WPX100 Set 40 m

Art.-Nr. 11170

- 4 x 10 m **WaterproofX® 100**
- 8 x 0,5 m (PVC-feeding hose)
- 8 x 1 pcs. (hose connector)
- 4 x Varioclix with metal strip
- 2 x 100 pcs. clamp
- 2 x 100 pcs. drive-in anchor
- 2 x 1 pcs. hammer drill

WPX100 Set EW 40 m

Art.-Nr. 11171

- 4 x 10 m **WaterproofX® 100**
- 8 x 0,5 m PVC-feeding hose
- 8 x 1 pcs. hose connector
- 2 x 100 pcs. clamp
- 2 x 100 pcs. drive-in anchor
- 2 x 1 pcs. hammer drill

WPX100 Set Plus 40 m

Art.-Nr. 11172

- 4 x 10 m **WaterproofX® 100**
- 8 x 0,5 m PVC-feeding hose
- 8 x 1 pcs. hose connector
- 4 x Varioclix with metal strip
- 40 x 1,0 m fixing mesh
- 2 x 100 pcs. drive-in anchor
- 2 x 1 pcs. hammer drill

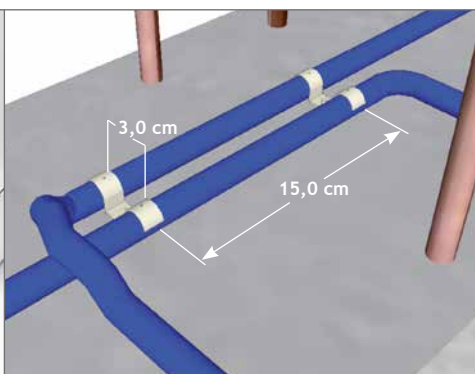
WPX100 Set Light 40 m

Art.-Nr. 11173

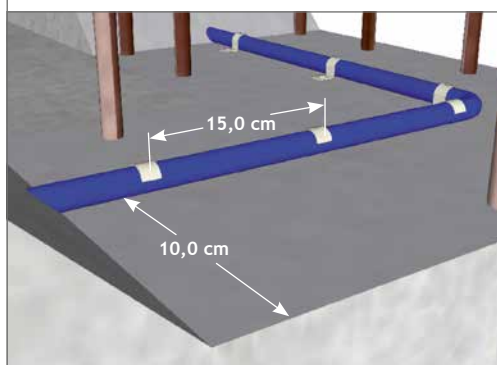
- 4 x 10 m **WaterproofX® 100**
- 4 x Varioclix standard
- 2 x 100 pcs. clamp
- Plastic bag



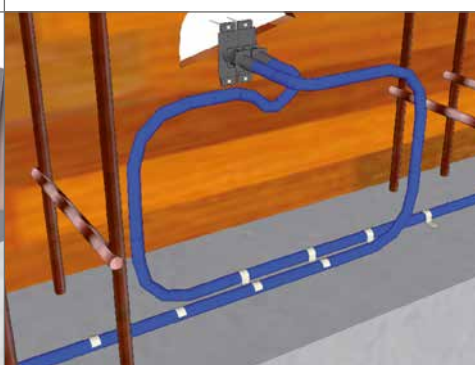
WaterproofX® 100 and assembly accessories



15 cm overlap at hose section joints and 3 cm next to each other



Distance to outer edge: 10 cm



Correctly installed **WaterproofX® 100** injection hose

1

2

3

4

5

6

7

8



M F P A Leipzig GmbH
Anerkannte Prüfstelle für Baustoffe, Bauteile und Bauarten
PÜZ-Stelle nach Landesbauordnung (SAC 02), Bauproduktengesetz (NB 0802)

**Deutscher
Anlagenbau**

Durch die DAP GmbH nach DIN EN ISO/IEC 17025 akkreditiertes Prüflaboratorium. Die Akkreditierung gilt für die in der Urkunde aufgeführten Prüfverfahren.

DAP-PL-4077.00

Geschäftsbereich V – Tiefbau
Geschäftsbereichsleiter: Prof. Dr.-Ing. Olaf Selle
Arbeitsgruppe 5.1 – Bauwerksabdichtung

Prüfbericht
PB 5.1/08-356
vom 10.10.2008 1. von

Gegenstand: Prüfung des einkanaligen WaterproofX[®] 100 zur bauaufsichtlichen Prüfung Teil 2

Auftraggeber: StekoX GmbH Abdicht-
Marktgröninger Straße
D 71701 Schwieberd

Bearbeiter: Dipl.-Ing. Jüling

Prüfzeitraum: März - September 20

Dieser Prüfbericht umfasst 12 Seiten und 1 Anlage.

Dieser Prüfbericht darf nur ungekürzt vervielfältigt werden. Eine Vervielfältigung ist nur mit schriftlicher Zustimmung der M F P A Leipzig GmbH in Form mit Originalunterschriften und Originalstempel des Prüfers zulässig.

Gesellschaft für Materialforschung und Prüfungsanstalt für das Bauwesen Leipzig mbH
Geschäftsführer: Jun.-Prof. Dr.-Ing. Frank Dahn
Sitz: Hans-Wegert-Straße 29 · D - 04319 Leipzig
Telefon: +49 (0) 341 85 82-143
Fax: +49 (0) 341 85 82-199
E-Mail: abdichtung@mfa-leipzig.de

Handl.-
Lfd.-Nr.:
Bestellverbindung:

M F P A Leipzig GmbH
Anerkannte Prüfstelle für Baustoffe, Bauteile und Bauarten
PÜZ-Stelle nach Landesbauordnung (SAC 02), Bauproduktengesetz (NB 0802)

**Deutscher
Anlagenbau**

Durch die DAP GmbH nach DIN EN ISO/IEC 17025 akkreditiertes Prüflaboratorium. Die Akkreditierung gilt für die in der Urkunde aufgeführten Prüfverfahren.

DAP-PL-4077.00

Geschäftsbereich V – Tiefbau
Geschäftsbereichsleiter: Prof. Dr.-Ing. Olaf Selle
Arbeitsgruppe 5.1 – Bauwerksabdichtung

Prüfbericht
059
von 3 Ausfertigungen

kanaligen Injektionsschlauches
00 in Verbindung mit einem Injektionsharz
basis als innenliegende Arbeitsfugen-
als Bauregelliste A, Teil 2

bdichtungstechnik
straße 55/1
berdingen

er 2008

ie Veröffentlichung – auch auszugsweise – bedarf
nicht. Als rechtsverbindliche Form gilt die Schrift-
schreibungsberechtigten.

Handlungsleiter: Amtsprüfung Leipzig
HB 177 19
Lfd.-Nr.: DE 81200649
Bestellverbindung: Sparkasse Leipzig
Kto.-Nr.: 1100 960 781
BLZ 060 550 02

M F P A

Allgemeines bauaufsichtliches Prüfzeugnis

Prüfzeugnis Nummer P-SAC 02 / 5.1 / 14 - 092

Gegenstand Injektionsschlauchsystem WaterproofX 100
einkanaliger Injektionsschlauch zur Abdichtung von Arbeitsfugen
in Bauteilen aus Beton mit hohem Wassereindringwider-
stand, die nicht den Produkten 10.23 und 10.24 in Bauregelliste
A Teil 1 zugeordnet werden können gemäß Bauregelliste A,
Teil 2, lfd. Nr. 2.53, Ausgabe 2014/1

Antragsteller StekoX GmbH Abdichtungstechnik
Blumenstraße 42/1
71106 Magstadt

Erstausstellung 15.10.2008

Verlängerung 14.10.2014

Geltungsdauer 13.10.2019

Dieses allgemeine bauaufsichtliche Prüfzeugnis besteht aus 8 Seiten.

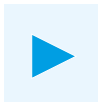
Dieses allgemeine bauaufsichtliche Prüfzeugnis darf nur ungekürzt vervielfältigt werden. Als rechtsverbindliche Form gilt die deutsche Schriftform mit Originalunterschriften und Originalstempel des Prüfers.

Es gelten die Allgemeinen Geschäftsbedingungen (AGB) der M F P A Leipzig GmbH.

Durch die DAkkS GmbH nach DIN EN ISO/IEC 17025 akkreditiertes Prüflaboratorium. Die Akkreditierung gilt für die in der Urkunde aufgeführten Prüfverfahren (in diesem Dokument mit * gekennzeichnet). Die Akkreditierung kann unter www.dakks.de eingesehen werden.
Nach Landesbauordnung (SAC 02) anerkannte und nach Bauproduktengesetz (NB 0802) notifizierte PÜZ-Stelle.

Gesellschaft für Materialforschung und Prüfungsanstalt für das Bauwesen Leipzig mbH (M F P A Leipzig GmbH)
 Sitz: Hans-Wegert-Straße 29 · D - 04319 Leipzig/Germany
 Geschäftsführer: Prof. Dr.-Ing. Frank Dahn
 Handelsregister: Amtsgericht Leipzig HRB 17719
 USt-Id-Nr.: DE 81200649
 Tel.: +49 (0) 341 - 8582-143
 Fax: +49 (0) 341 - 8582-199

Please request the complete set of our latest test certificates.



WaterproofX[®] 1

is used to seal construction joints between two concrete sections.

This building standard's approved injection hose features discharge ports equally spaced over its entire circumference giving the hose optimum grouting characteristics.

There are no limitations regarding the choice of grouting material, all currently available grouting materials may be injected using the **WaterproofX[®] 1** hose. By installing the injection hose correctly maximum results can be achieved using low levels of grouting material. Repeated injection is also possible (ultra-fine cement, polymer gel matrix).



ADVANTAGES

- _ Simple to install
- _ Delivered in easy to handle coils
- _ Straight forward cutting to length, due to markings on the **WaterproofX[®] 1** injection hose.
- _ Economical to work with due to simple manufactured parts and assembly accessories
- _ Can be injected with all currently available grouting materials (PUR resin, PUR foam, EP resin, polymer gel matrix, ultra-fine cement grout)
- _ Low material requirements due to its optimum interior diameter
- _ Certified and approved
- _ Repeated injection possible (with polymer gel matrix and ultra-fine cement)
- _ Long sections also possible (tested up to 30 m)

GENERAL FEATURES

- _ Profile: round
- _ Colour: blue
- _ External diameter: 13 mm
- _ Internal diameter: 6 mm
- _ Distance between the metre markings: 1 m

PACKAGING

- _ Coil: 120 m
- _ Pallet: 3360 m

MICRO-PORT DIMENSIONS

- _ Length: approx. 3 mm
- _ Spacing interval: approx. 10 mm

INJECTION MATERIAL

PUR resin | PUR foam | EP resin |
Polymer gel matrix | Ultra-fine cement

1

2

3

4

5

6

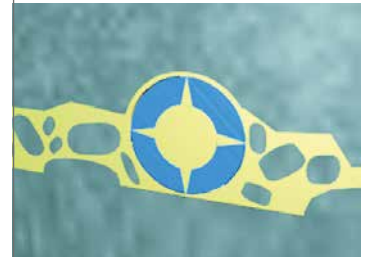
7

8

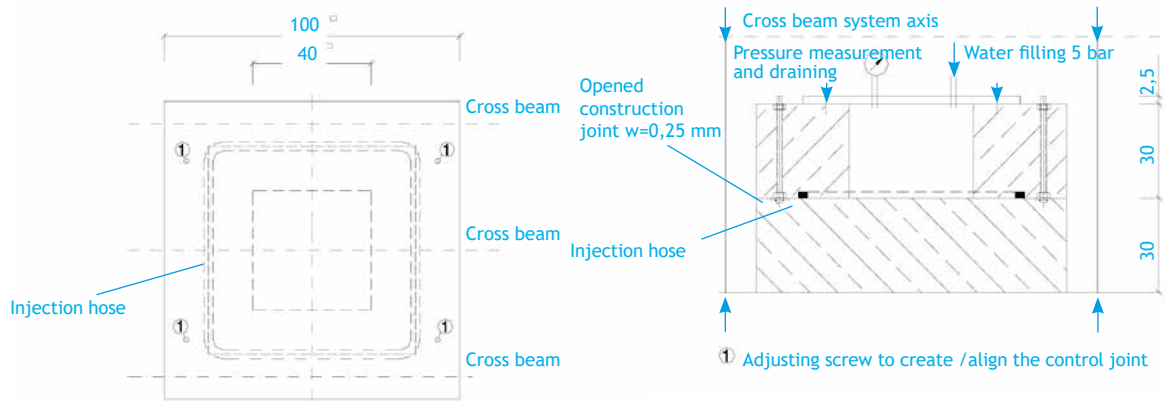


The hose is equipped with discharge ports, equally spaced over its entire circumference. This provides the injection hose with optimum grouting characteristics. The thickness of the walls of the injection hose relate specifically to the characteristics of the grout. This ensures that during the injection process, the microscopic ports open at 1 bar and the injected material is then allowed to perform its task of penetrating all areas of the construction joint that require grouting. As a result, a more secure and longer lasting sealing of the construction joints is achieved.

The micro-ports prevent any infiltration of concrete silt and foreign bodies into the injection hose itself. After successful injection, the reduction in pressure at the end of the injection process causes the micro-ports to close. The injection channel can then be flushed out without any threat of any injection material seeping back into the injection hose.



TEST PIECE



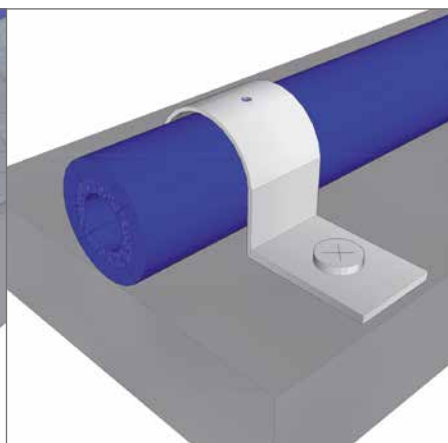
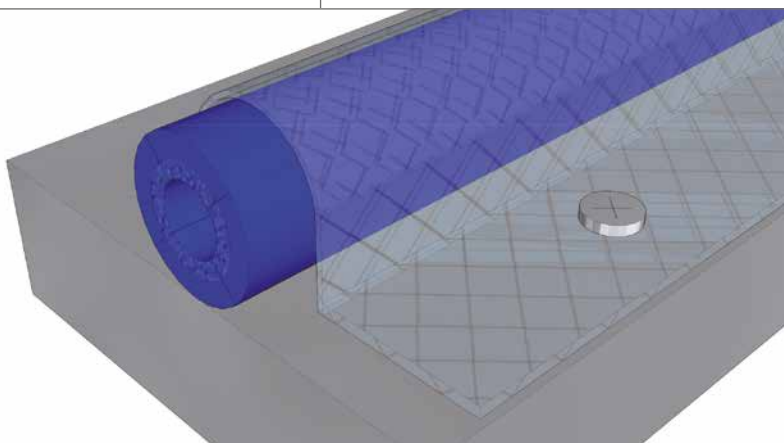
Please request the detailed data sheet and test certificates.



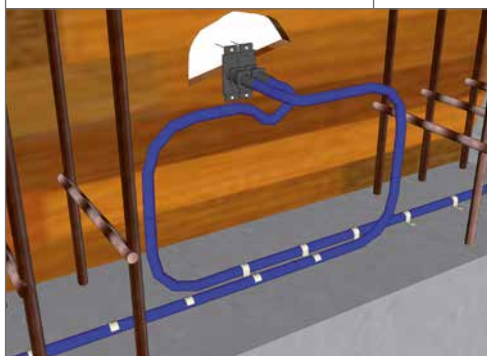
Installing the injection system in the correct and proper manner is essential to achieving an impermeable joint.

The following points are to be taken into consideration during installation:

- _ The standard hose length is 10 m
- _ Longer sections are possible and trouble-free



- _ **WaterproofX[®] 1** must lie flush with the surface of the first concrete section
- _ **WaterproofX[®] 1** is to be installed using hose clips or a fixing mesh. The distance between the clips should be approx. 15 cm.



- _ **WaterproofX[®] 1** is in its ideal position when centrally aligned.
- _ The distance between the **WaterproofX[®] 1** hose and the outer edge of the joint must be at least 10 cm.
- _ At hose section joints, an overlap of 15 cm is to be adhered to with the two hoses laid parallel to each other at a distance of 5 cm.
- _ The connectors **Varioclix[®]** are to be installed in such a way as to allow access at all times.

1

2

3

4

5

6

7

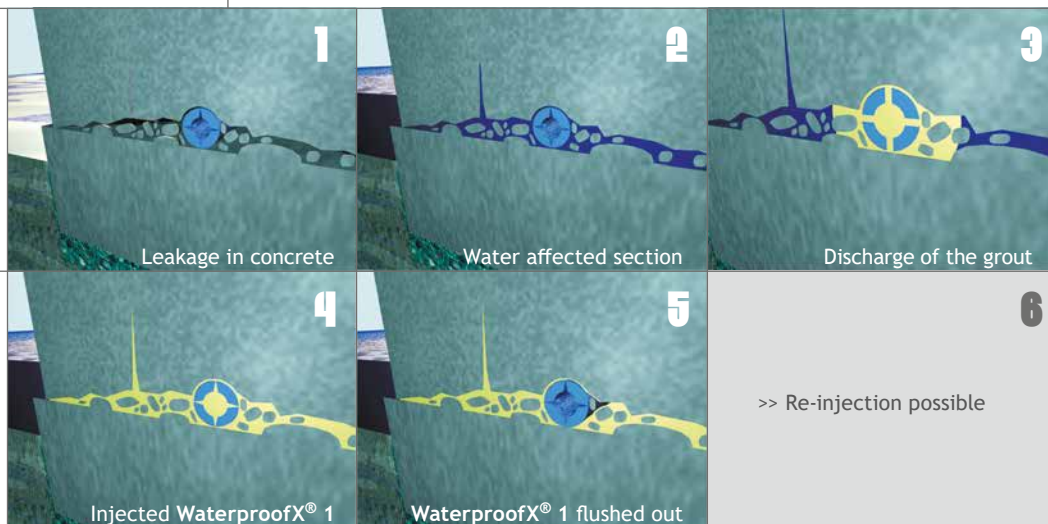
8



Due to its special design **WaterproofX[®] 1** permits grout injection at low pressure, thus offering maximum security as opposed to a system requiring a higher pressure.

Once the concrete has set (a minimum of 28 days), the hose is professionally injected in accordance with the DBV (German Institute for Concrete) data sheet “Verpresste Injektionsschläuche für Arbeitsfugen” (Grout Injection Hoses for Construction Joints). A number of injection variations are available: injection using an injector hose (reinforced PVC hose) or using a **Varioclix[®]**.

- 1 Check the continuation of the hose by flushing with water or with air.
- 2 Using the connector (injector hose, **Varioclix[®]**) the hose is injected until traces of the injected material are discharged from the open end. This end is closed by means of an injection nipple as soon as the injected material flows freely (without air pockets).
- 3 The flow and extent of the injection material in the concrete joints can be monitored during the injection process by means of the injection pump’s pressure gauge.
- 4 The injection process is continued until constant pressure has been reached. Constant pressure indicates that the concrete joint is taking no more grouting material thus signalling the end of the process.
- 5 Any injection material still within the injection hose is simply flushed out by means of a water pump (flushing pump from a 2K-pump unit). Hardly any pressure is required.
- 6 On completion of the flushing process, the injection hose is ready for further injections.





MFPA Leipzig GmbH
Prüf-, Überwachungs- und
Zertifizierungsstelle nach
Landesbaubehörde (ISAC 02)



Bereich: Konstruktiver Ingenieurbau
Bereichsleiter: Univ.-Prof. Dr.-Ing. Stefan Winter
Arbeitsgruppe: Bauwerksabdichtung

Untersuchungsbericht

Nr. U 2.2 / 03 - 235

Vom 20.05.2003 - 1. Aufzeichnung

Gegenstand:

Auftraggeber:

Bearbeiter:

Auftrag:
24.04.2003

Dieser Untersuchungsbericht be

Dieser Untersuchungsbericht darf nur ungekürzt
vorliegen schriftlichen Zustimmung der MFPA

Gesellschaft für Materialforschung und Prüfungen
für das Bauwesen Leipzig mbH
Hans-Wegeler-Straße 2 b - 1

Postfach: 11 11 05
04105 Leipzig
Telefon: 0341 / 65 62-143
Fax: 0341 / 65 62-195
e-Mail: abdothung@mfpa-leipzig.de

MFPA Leipzig Prüfbereich P 2.2 / 03 - 076 Seite 13 von 13 Seiten

- Die Prüfung der Injizierbarkeit eines 10 m-Schlauchabschnittes mit Feinstzement und Acrylatgel zeigte, dass Injektionsschlauchabschnitte mit diesen Längen zuverlässig gefüllt werden können. Die Perforierung des Injektionsschlauches gewährleistet auch im nicht einbetonierten Zustand einen gleichmäßigen Druckaufbau und damit einen gleichmäßigen Materialaustritt über die gesamte Schlauchlänge.
- Das Eindringen von Zementschlämme in den Injektionsschlauch während des Betoniervorgangs kann ausgeschlossen werden. Der Nachweis wurde über die Prüfung des Schlauches bei einem Prüfdruck von 1,2 bar erbracht. Während dieses Zeitraumes wurde das Schlauchsystem mit Wasser gefüllt.
- Der Waterproof X1-Injektionsschlauch zeigt eine gute Injizierbarkeit. Unter Berücksichtigung der Wasserundurchlässigkeit des Schlauches und der Injektionsgeschwindigkeit ist der Einsatz dieses Injektionsmittels bis zu einem Wasserdruck von 5 bar bei einem Sicherheitsfaktor von 2,5 kN/m² bei einem äußeren Wasserdruck von 1,2 bar möglich.

Zusammenfassend ist festzustellen, dass die Injizierbarkeit von Waterproof X1 zur Abdichtung von Arbeitsfugen in Beton bei mehrfachen Injektionen in Beton nachweisbar ist. Voraussetzung ist neben der richtigen Anwendung des fachgerechten Einbaus.

Dr.-Ing. Homig
Arbeitsgruppenleiterin



MFPA Leipzig GmbH
Prüf-, Überwachungs- und Zertifizierungsstelle für
Baustoffe, Bauprodukte und Baustysteme
Geschäftsbereich V - Tiefbau
Prof. Dr.-Ing. Olaf Seile
Arbeitsgruppe 5.1 - Bauwerksabdichtung

Allgemeines bauaufsichtliches Prüfzeugnis

Prüfzeugnis Nummer

P-SAC 02 / 5.1 / 15 - 175

Gegenstand

Injektionsschlauchsystem Waterproof^X 1
einkanaliger Injektionsschlauch injizierbar mit Feinstzement und CarboCrack Seal H Plus zur Abdichtung von Arbeitsfugen in Bauteilen aus Beton mit hohem Wassereindringwiderstand, die nicht den Produkten 10.23 und 10.24 in Bauregelliste A Teil 1 zugeordnet werden können gemäß Bauregelliste A, Teil 2, Ifd. Nr. 2.53, Ausgabe 2014/2

Antragsteller

StekoX GmbH Abdichtungstechnik
Blumenstraße 42/1
D - 71106 Magstadt

Erstausstellung

27.06.2005

Verlängerung

27.06.2015

Geltungsdauer

26.05.2020

Dieses allgemeine bauaufsichtliche Prüfzeugnis besteht aus 8 Seiten.

Dieses allgemeine bauaufsichtliche Prüfzeugnis darf nur ungekürzt vervielfältigt werden. Als rechtsverbindliche Form gilt die deutsche Schriftform mit Originalunterschriften und Originalstempel des/der Zeichnungsberechtigten.

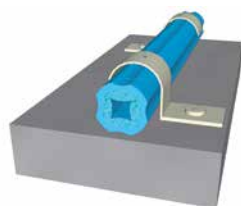
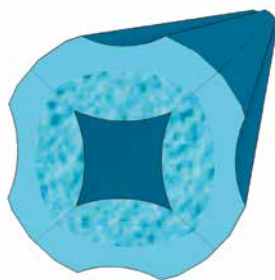
Es gelten die Allgemeinen Geschäftsbedingungen (AGB) der MFPA Leipzig GmbH.



Durch die DIBt GmbH nach DIN EN ISO/IEC 17025 zertifizierte Prüfstelle. Die Akkreditierung gilt für die in der Urkunde aufgeführten Prüfverfahren. Ein weiteres Dokument mit dem Namen "Liste der akkreditierten Verfahren" ist separat erhältlich. Nach Landesbauordnung (SAC 02) anerkannte und nach Bundesbauordnung (NB 0303) vollkommene Prüf-Stelle.

Gesellschaft für Materialforschung und Prüfungen für das Bauwesen Leipzig mbH (MFPA Leipzig GmbH)
Hans-Wegeler-Straße 2b - 10418 Leipzig/Germany
Geschäftsführer: Prof. Dr.-Ing. Frank Dahn
Anteilhaber: Dr. rer. oec. Dr. rer. oec. Dr. rer. oec.
USt-Id-Nr.: DE 81503549
Tel.: +49 (0) 341 - 6562-143
Fax: +49 (0) 341 - 6562-195

Please request the detailed data sheet and test certificates.



Installed with hose clips

SX[®] 1 is used to seal construction joints between two concrete sections.

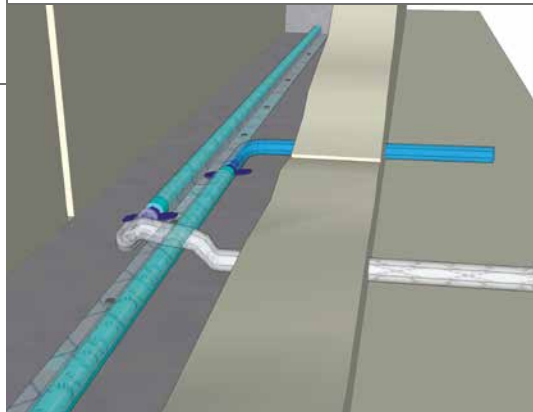
Injektionssystem SX[®] 1 the first round grout injection hose that lies totally flat.

The semi-rounded cavities, running in the direction of the hose, give this injection system a unique flush contact to the joint. This design gives the system immense flexibility and provides it with a distinct economical advantage.

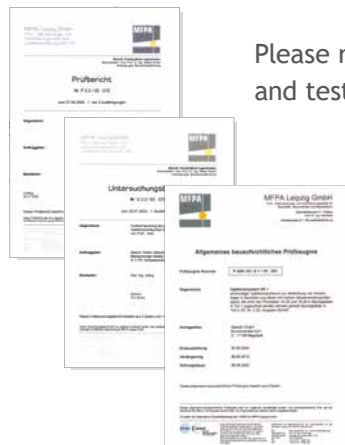
The fully flush joint contact, which can be secured using a wire mesh, guarantees maximum system security during the injection process.

ADVANTAGES

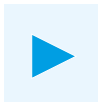
- _ Easy to cut to length due to markings on the outer shell of the SX[®] 1
- _ Guaranteed continual flow of the injection material due to the star-shaped interior geometry, even if the hose has severe bends.
- _ Extensive range of accessories for all applications
- _ Lies totally flat



Installation with fixing mesh



Please request the detailed data sheet and test reports.



waterproofX[®] 1000

INJECTION HOSE SYSTEM
WITH OVERSIZE INJECTION CHANNEL



WaterproofX[®] 1000 is a newly developed, one-piece injection hose with a big core diameter. It is made from a specially formulated plastic, which features excellent usability characteristics. Following concreting, it functions as a channel for transporting the grouting material along the joint. Due to the extraordinary geometrical shape this hose is perfect for technically challenging injections with overlengths and various groutings.

The hose is equipped with discharge ports, equally spaced over its entire circumference. This gives the injection hose optimum grouting characteristics.

An optimization of the core diameter by means of an enlargement results in an improvement when injecting all kinds of groutings.



GENERAL CHARACTERISTICS

Profile:	round / hexagonal
Colour:	blue
Diameter:	external: 18 mm, internal: 10 mm
Metre markings at:	1 m interval
Lengths micro-ports:	approx. 5 mm
spacing intervals:	approx. 10 mm

PACKAGING

Coil: 60 m	pallet: 28 rolls per 60 m = 1.680 m
------------	-------------------------------------

GROUTING MATERIAL

Ultrafine cement, cement lime, cementeous suspensions, PUR foam resin, PUR resin, polymer gel matrix, EP resin

1

2

3

4

5

6

7

8



WaterproofX[®] 100 FSI is an injection hose that is particularly suited for ridge injection with a mineral grouting material.

WaterproofX[®] 100 FSI is a newly developed injection hose with a particularly large internal cross section. It is made out of a specially formulated plastic and is characterised by its easy workability. It takes on a distributive role once concreting is complete and the grouting material has been injected.

The injection hose features discharge ports equally spaced over its entire circumference giving the hose optimum grouting characteristics

The chosen thickness of the walls of the injection hose relate specifically to the characteristics of the grout, thus ensuring that during the injection process the microscopic ports open at low pressure and the injected material is then allowed to perform its task of penetrating all areas that require grouting.

PROFILE DESCRIPTION

_ Profile:	round / hexagonal
_ Colour:	transparent blue
_ External circumference:	approx. 22 mm
_ Internal circumference:	approx. 16 mm
_ Distance between markings:	1 m

MICRO PORT DIMENSIONS

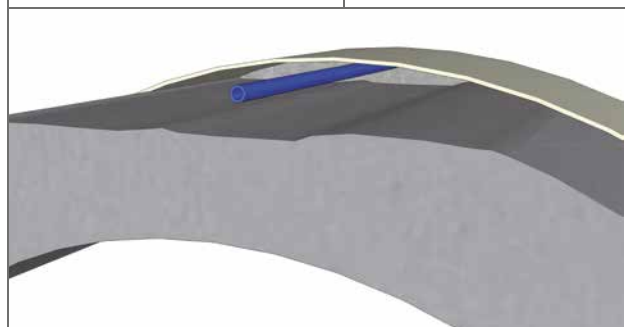
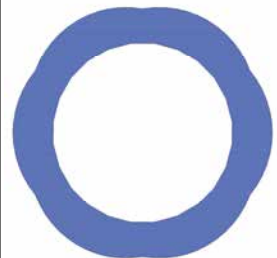
_ Length:	approx. 2 cm
_ Distance apart:	approx. 5 cm

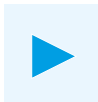
PACKAGING

_ Reel:	approx. 100 m
_ Pallet:	approx. 2.800 m

INJECTION MATERIAL

cement paste | PUR resin
PUR foam | EP resin
Polymer gel matrix
Ultra-fine cement





polyproof[®] 1 injekt polyproof[®] 1 injekt sw

COMBINED SWELL/INJECTION SYSTEM



PolyproofX[®] 1 Injekt / PolyproofX[®] 1 Injekt SW Injekt is used to seal construction joints between two concrete sections.

PolyproofX[®] 1 Injekt / PolyproofX[®] 1 Injekt SW is the combination of two active joint sealing systems: the **WaterproofX[®] 100** injection hose and the chemical waterstop PolyproofX[®] 1 Injekt / PolyproofX[®] 1 Injekt SW.

With regard to this combined system, the **PolyproofX[®] 1** swelling strip takes on the immediate sealing task. The strip consists of TPE and the swelling pressure resulting from its pre-induced swelling action seals the joint securely and reliably. **PolyproofX[®] 1 SW** has been especially developed for salt water. Special, hydrophilic polymers also ensure a controlled swelling process under salt water conditions.

The unique **WaterproofX[®] 100** hose found at the system's core can, if need be, be injected once or numerous times. Excess lengths of up to 30m are possible without problem. Due to the strip's downward opening design, the injection hose lies fully flat on the joint allowing the grouting material to be distributed across the entire area.



GENERAL CHARACTERISTICS

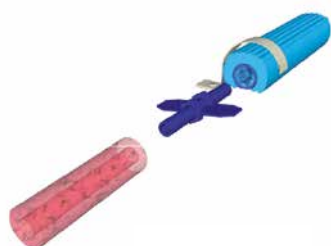
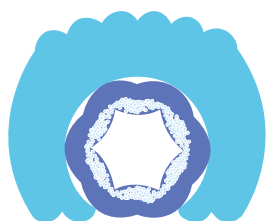
_ Profile:	External dimensions 19 x 23 mm Injection hose dimensions, external: 13 mm, internal: 8.3 mm
_ Consistency:	plastic covering
_ Core colour:	dark blue
_ Cover colour:	light blue
_ Swelling power:	approx. 450 %
_ Rain protection:	24 hours

PACKAGING

_ Packing unit:	120 m / reel
_ Packing set:	5 x 8 m rolls + 200 hose clips + 5 Varioclix [®]
_ Pallet:	1680 m
_ Storage:	dry, protect from mechanical damage

WORKING TEMPERATURES

_ Installing:	-20°C – +70°C
_ Injecting:	> +5°C (concrete component, material)





Bentoproof Injekt PLUS is the combination of two active joint sealing systems: the **WaterproofX® 1** injection hose and the bentonite waterstop **Bentoproof black/Bentoproof black PLUS**. All systems hold a General Building Supervisory Test Certificate.

This practical combination guarantees the user the maximum possible security and water tightness. With regard to **Bentoproof Injekt PLUS**, protective covering reliably prevents premature swelling, its installation can be carried out regardless of weather conditions. The concrete's setting process causes the protective covering to disintegrate.

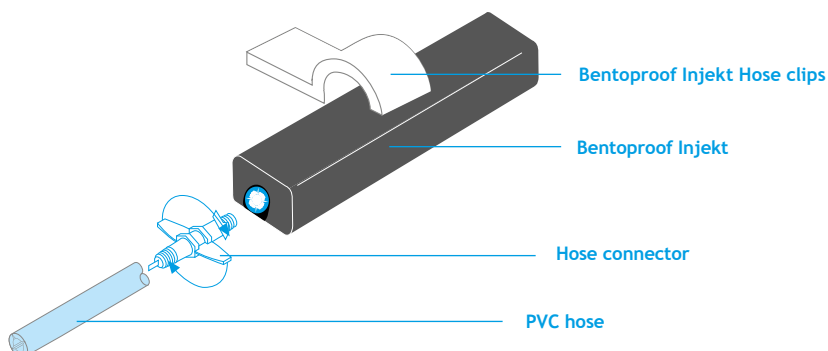
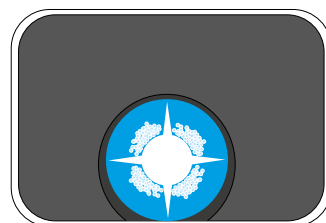
With regard to this combined system, the bentonite waterstop **Bentoproof black** takes on the immediate sealing task. The **WaterproofX® 1** hose found at the system's core can be injected as a secondary sealing measure if need be (multiple injections possible depending on grouting material). As a result, the system fulfils the highest standards of quality.

GENERAL CHARACTERISTICS

- _ Profile: External dimensions 20 x 25 mm
Core dimensions Ø outer: 13 mm, inner: 6 mm
- _ Length: 8 m piece pre-assembled
- _ Consistency: plastic
- _ Colour Core: blue
- _ Colour Covering: black

PACKING / STORAGE

- _ Packing set: 5 x 8 m rolls + 40 m fixing mesh + 5 Varioclix®
- _ Pallet: 800 m
- _ Storage: dry, protect from mechanical damage



WORKING TEMPERATURES

- _ Installing: -20°C – +70°C
- _ Injecting: > +5°C
(concrete component, material)

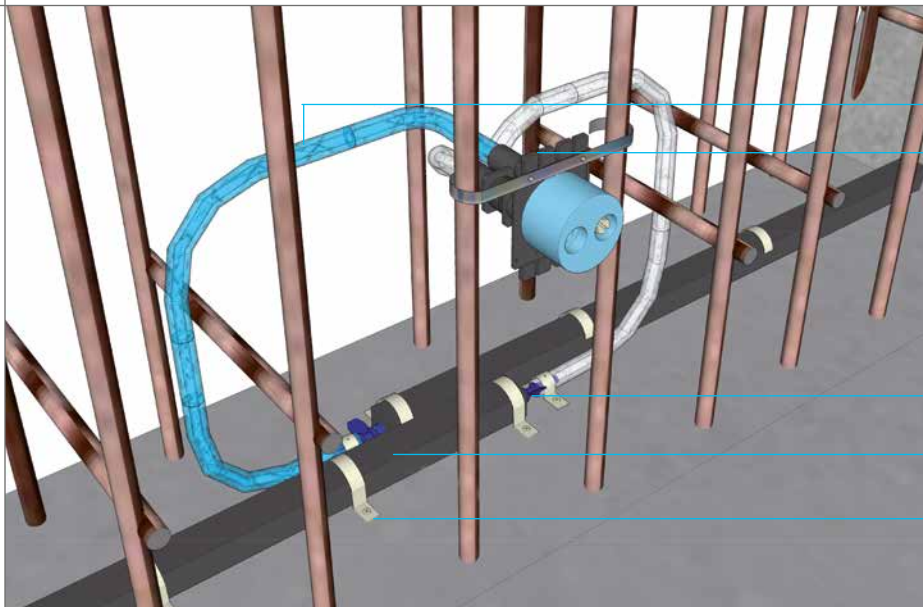


bentoproof injekt plus

INSTALLATION

The sub-surface must be even, free of loose particles and must not feature any sharp-edged rises. Before laying the hose, ice particles must be allowed to thaw and standing water as well as cement silt is to be removed.

The swelling injection system is positioned flush with the surface of the first concrete section in the middle of the joint between the reinforcements. It is secured using hose clips or contact adhesive **SuperX 1**.



PVC hose

Varioclix®
with metal strips

Hose connector

Bentoproof Injekt

Hose clips

The ventilation ends are routed into the **Varioclix®**, which is fixed to the reinforcement rods.

This area is to be protected and the connections properly labelled (**Varioclix®**) to allow future injections to take place, if need be.



1

2

3

4

5

6

7

8



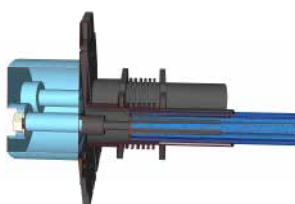
**ORIGINAL
STEKOX®
PROVED
QUALITY**

The **Varioclix®** is a revolutionary injection hose connector suitable for all types of injection hose set-ups and all **ankox** injection hose systems.

_ All types of installation set-ups are possible.

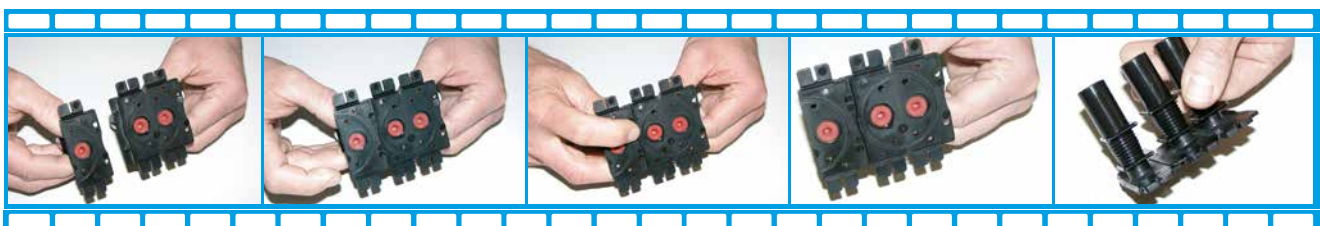
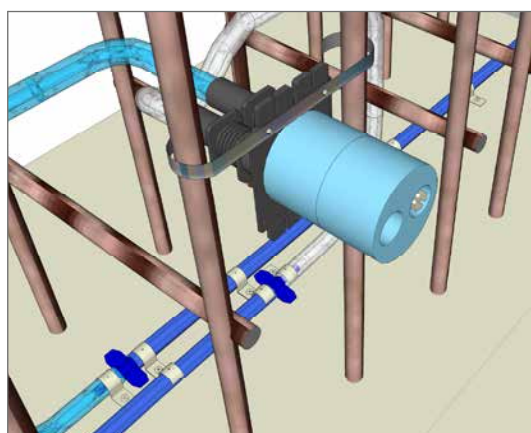
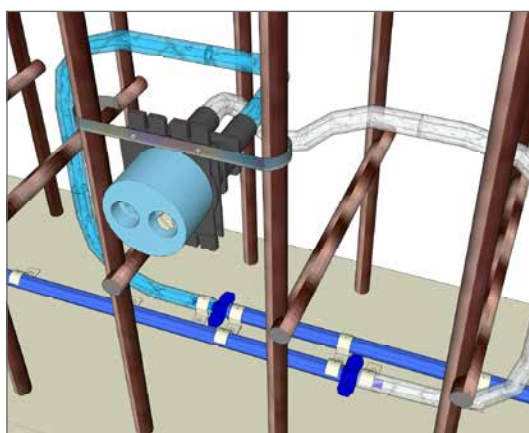
_ The basic idea:

One **Varioclix®** can either be split to form two single packers or two **Varioclix®** can be clipped together in various ways to create different packer combinations.



Combinations with an uneven number of packers can also be compiled in this way.

The new packer is either nailed to the formwork (without the covering cap), secured with metal strips to the reinforcing rods (the strength of the covering cap corresponding to the concrete covering) or fixed with an attachment to the base. The covering cap complies with fire regulations.

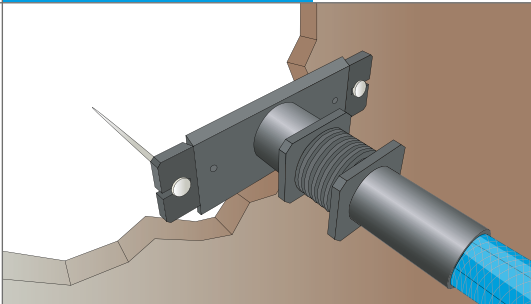




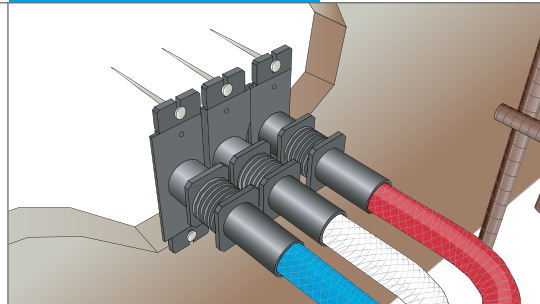
varioclix®

INJECTION HOSE ACCESSORIES

Varioclix® split



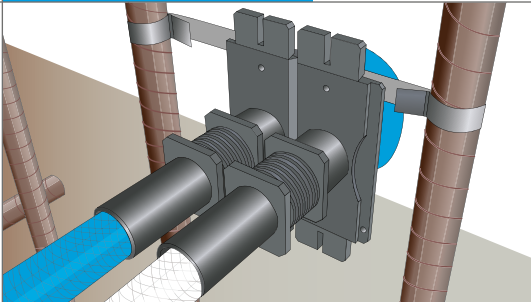
Varioclix® 3 halves



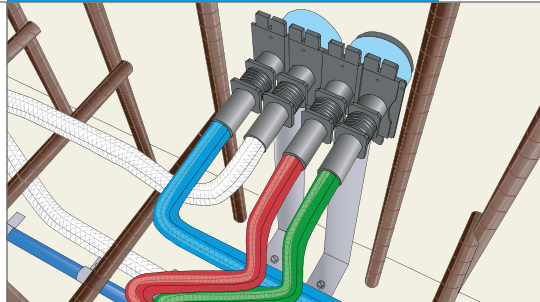
Formwork set-up

Varioclix® usage (also possible with pre-assembled injection hoses)

Varioclix® with metal strips



Varioclix® double with base attachment



Formwork set-up

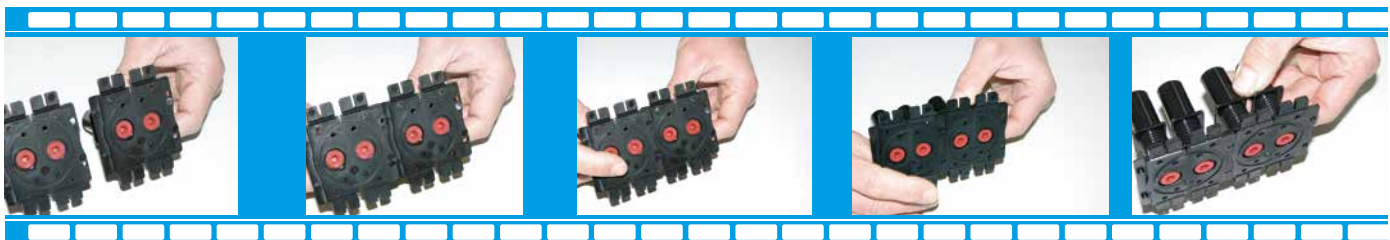
Varioclix® usage (fixed to the reinforcements or the base)

GENERAL CHARACTERISTICS

- _ Colour: **black**
Foam rubber cover available in different colours (black or grey)
- _ Dimensions: **7.4 x 5.8 x 6.0 cm**
Central breaking point for splitting.
Push fit connection.

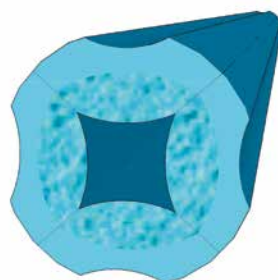
PACKAGING

- _ Carton:
Varioclix® 30 units
Varioclix® with metal strips, 30 units
Varioclix® or base attachment, 30 units

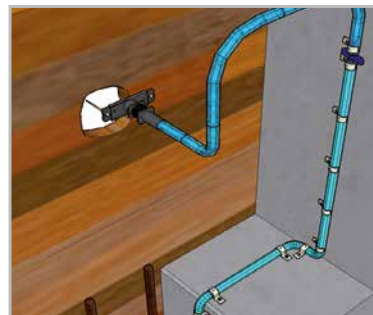




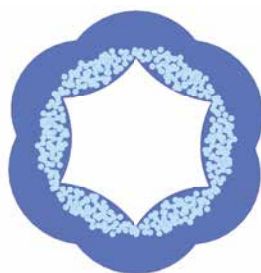
Fills



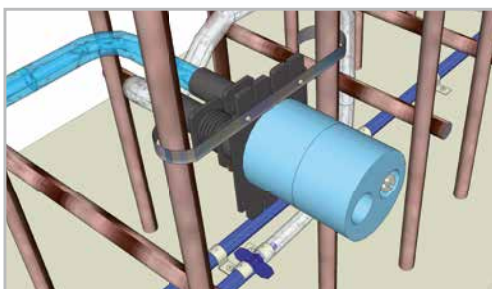
SX 1



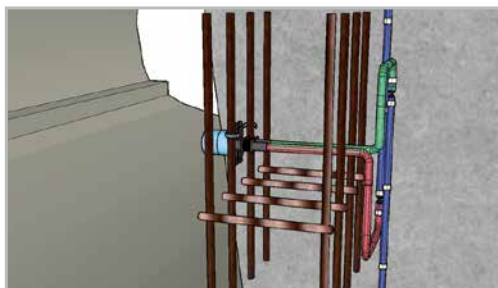
Varioclix® for nailing to the formwork



WaterproofX® 100



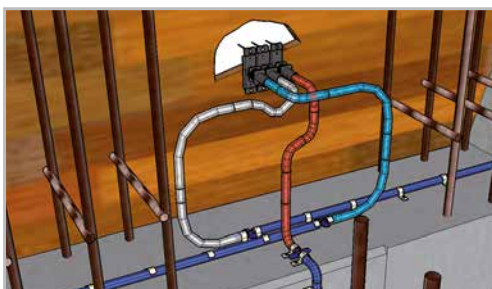
Varioclix® with metal strips for increased concrete cover (variable)



Varioclix® with metal strips

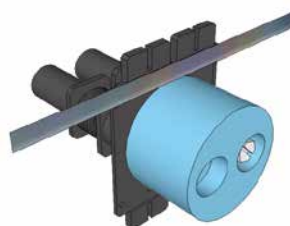


PolyproofX® 1 Injekt



Varioclix® for nailing on, triple combination

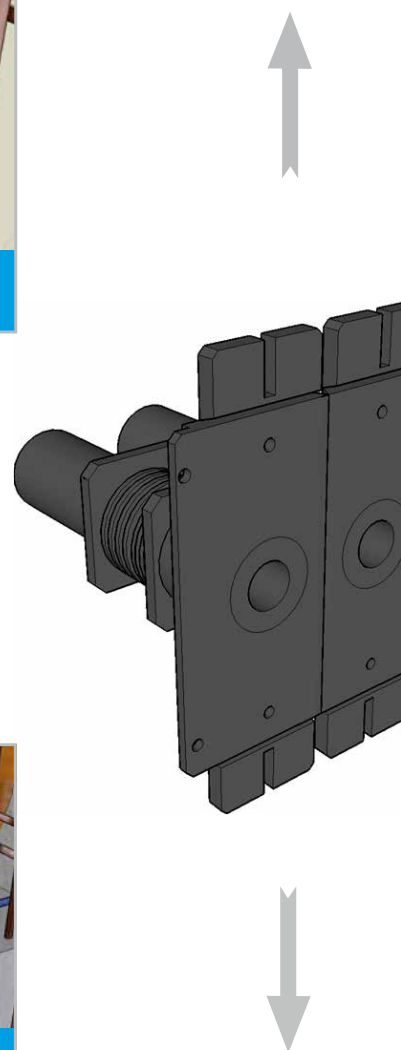
and



Varioclix® with metal strips and blue cap



Varioclix® with metal





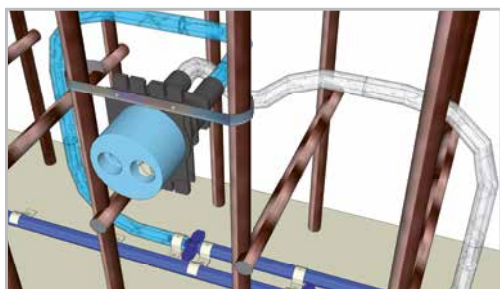
varioclix®

INJECTION HOSE ACCESSORIES

anytime



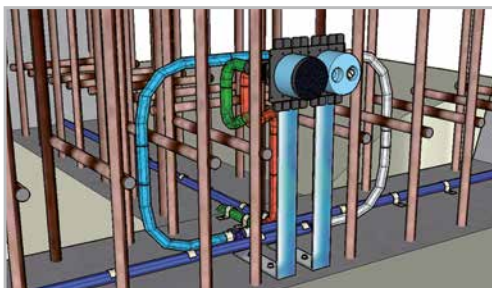
Varioclix®



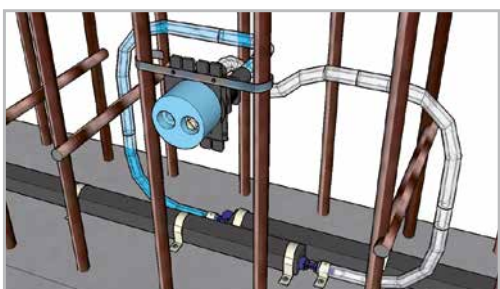
Varioclix® with metal strips



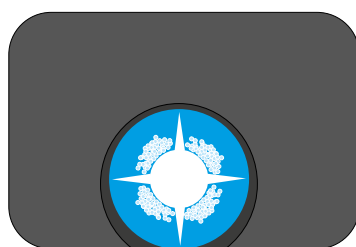
WaterproofX® 1



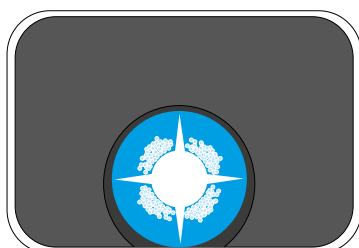
Varioclix® with base slab anchoring



Varioclix® with metal strips



Bentoproof Injekt



Bentoproof Injekt PLUS

anywhere

1

2

3

4

5

6

7

8

MEMBRANE PUMP SX 200

Technical data

Connection specifications	230 V/50 Hz
Operating pressure, continuously adjustable	5.0 – 200 bar
Motor capacity	0,75 kW
Pump delivery	2.1 l/min.
Weight	22 kg
Height/Width/Length assembled	50/28/75 cm

Delivery includes:

SX 200 pump with 6 litre reservoir
Pressure gauge, 5 m HP hose
HP ball valve with nozzle



MANUAL PISTON PUMP SX 10

Technical data:

Operating pressure, according to pressure	0 – 100 bar
Pump delivery	2 cm ³ /hub
Capacity	0.5 l
Weight	1.2 kg
Height / Width / Length assembled	13/6/35 cm

Delivery includes:

SX 10 pump with feed pipe and nozzle





ankox FIBRE-GLASS BOREHOLE PACKER (1 & 2)

Technical Data

_ Dimensions:	115 mm x 13 mm
_ Borehole diameter:	14 mm
_ Material:	carbon-fibre reinforced polyamide

ADVANTAGES

- _ Simple to remove by knocking (predetermined breaking point)
- _ Corrosion free
- _ Injection pressure tested to 300 bar
- _ Double seal

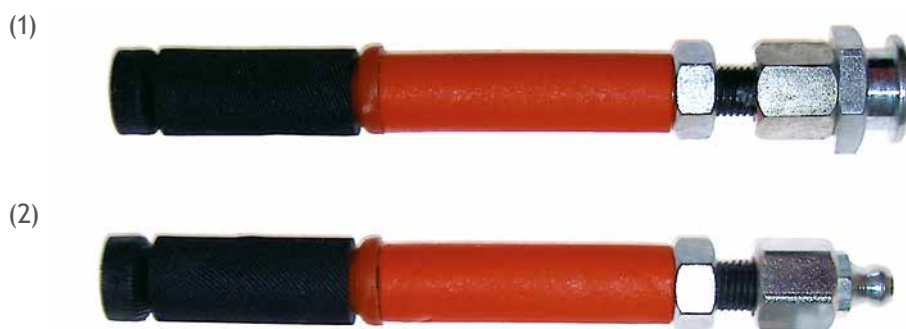
CONSTRUCTION SITE - FIBRE-GLASS DAILY PACKER (3 & 4)

The Construction site - Fibre-Glass Daily Packer is suitable for immediate removal following the injection process.
The non-return valve at the end of the packer prevents the return flow of the injected material.

Fibreglass packer

- (1) Flat head nipple
- (2) Ball head nipple

Art.-No. 60100



One day packer

- (3) Flat head nipple
- (4) Ball head nipple

Art.-No. 60110



1

2

3

4

5

6

7

8



ankox PUR INJECTION RESIN

ankox PUR injection resin is used for closing, sealing and elastically filling dry, damp or water-bearing cracks and serves as an additional horizontal damp-proof barrier against moisture rising by capillary action in brick, dry stone, natural stone and mixed brickwork walls.

A further use of Das **ankox PUR** injection resin is the sealing of construction joints in reinforced concrete structures by grout injection using injection hoses. If the cracks are of a high water-bearing nature, the hose must be pre-injected with **SX PUR** injection foam resin beforehand.

CHARACTERISTICS

- _ 2-component PUR resin
- _ Ideal for being used as a grout in the **ankox** injection hose systems **WaterproofX® 1**, **WaterproofX® 100**, **SX® 1**, **PolyproofX® 1 Injekt** and **Bentoproof Injekt**
- _ Comp. A and comp. B are homogenously mixed at a mix ratio of 1:1.
- _ Working temperature: **> 5°C (building element, material)**
- _ Curing time (1l / 20°C): **approx. 1.5 hours**
- _ Weight: **25.5 kg**
- _ Cleaning: **ankox Cleaner A PLUS, or B**

SX® FOAM STOP

SX® Foam Stop is a moisture-reactive injection foam resin for closing cracks and leaks that are water-bearing and under pressure. The injection foam resin is fast-foaming and is capable of increasing its volume by 30 to 50 times. For permanent sealing, a **ankox PUR** injection resin has to be injected after. In order to speed up the process of stopping larger influxes of water, a **ankox Accelerator** can be added to **SX Foam Stop** before use to increase the reaction.

CHARACTERISTICS

- _ **SX®-PUR** foam resin
- _ 1-component
- _ Curing time: **Reaction starts after water contact**
- _ Working temperature: **0 – 40°C**
- _ Weight: **10 kg**
- _ Cleaning: **ankox Cleaner A PLUS, or B**
- _ **ankox Accelerator** 4.5 kg / 19 kg



ankox EP RESIN

ankox epoxy resin is used for closing and bonding dry cracks in concrete elements, pre-stressed concrete elements, etc.

The colourless **ankox** EP resin hardens with a constant volume to a hard resin with high adhesion of the flanks allowing for the building elements to be connected by friction.

CHARACTERISTICS

- _ 2-component epoxy resin
- _ Comp. A and comp. B are homogenously mixed at a mix ratio of 2:1.
- _ Curing time (1 l, 20°C): **approx. 110 min**
- _ Working temperature: **> 8° C (building element, material)**
- _ Weight: **13 kg**
- _ Cleaning: **ankox Cleaner A PLUS, or B**



1

2

3

4

5

6

7

8



POLYMER-GEL MATRIX SX® T

SX® T is a 4-component polymer gel matrix for sealing constructions by injection. The polymer gel matrix is a thin, water-soluble, reactive injection material with a polymer basis used in combination with a 2-component injection unit. With a consistency similar to water, it is pressed into building elements where it hardens in the pores and cracks. Due to being highly adhesive, the gel hardens extremely well on all mineral substrates and metals with consistently high elasticity.

The curing process of **SX® T** is linear and constant making the polymer gel matrix particularly suitable for being injected via multi-injection injection hoses through which water can be used to flush the hoses out.

CHARACTERISTICS

- _ **SX® T** is a 4-component system
- _ Working with the components (comp. 1: consists of A1 and A2 comp. 2 consists of B1 and B2) is carried out with a volume ratio of 1:1
- _ Reaction time when keeping to the respective quantities:
approx. 5 minutes
- _ Working temperature: **+ 5 °C (building element, material)**
- _ Weight: **10.524 kg**
- _ Cleaning: **Water**

POLYMER-GEL MATRIX SX® H

SX® H is a 4-component polymer gel matrix for sealing constructions by injection. The polymer gel matrix is a thin, water-soluble, reactive injection material with a polymer basis used in combination with a 2-component injection unit. With a consistency similar to water, it is pressed into the building elements where it hardens in the pores and cracks. Due to being highly adhesive, the gel hardens extremely well on all mineral substrates and metals with consistently high elasticity.

Due to its special composition, **SX® H** can in particular be injected where continuous water is not present. **SX® H's** high water retention levels also allows the polymer gel matrix to be used in areas of varying groundwater levels.

CHARACTERISTICS

- _ **SX® H** is a 4-component system
- _ Working with the components (comp. 1: consists of A1 and A2 comp. 2 consists of B1 and B2) is carried out with a volume ratio of 1:1
- _ Reaction time when keeping to the respective quantities:
from approx. 32 seconds to 3 minutes
- _ Working temperature: **+ 5 °C (building element, material)**
- _ Weight: **27.5 kg**
- _ Cleaning: **Water**



accessories

GROUTING MATERIAL



ankox FINE INJECTION CEMENT

ankox fine injection cement is a one component, mineral injection material with a fine cement basis. **ankox** fine injection cement is suitable for injection in cracks with a width of 0.2 mm or more, for filling in cavities as well as for hardening concrete and masonry.

In contrast to similar micro-fine cements, **ankox** fine injection cement is a one component material and does not have to be stirred with a colloidal mixer.

ankox CLEANER

ankox Cleaner A PLUS

This is a cleaning material for pumps and equipment. It is suitable for all **ankox** resins in a fluid or non-cured state. It is an organic solvent mixture that is flammable and colourless.



ankox Cleaner B

This is a cleaning material with a very high solvency power for dissolving or swelling cured resins, e.g. injection foam resins. It is an organic solvent that is flammable and colourless.

1

2

3

4

5

6

7

8



20 x 2 mm

20 x 5 mm

20 x 10 mm

20 x 20 mm

30 x 30 mm

ø 30 mm

30 x 30 mm

PolyproofX[®] 1 is a swellable, thermo-plastic elastomer, activated by moisture, which is characterized by high elasticity and ultimate tensile strength. **PolyproofX[®] 1** finds wide application in the most diverse constructions of chutes and prefabricated components, as well as wide application in tubing.

The swelling property is achieved through special hydrophilic polymers, which are inseparably enchainned with the carrier material (TPE). In this manner, high elasticity and ultimate tensile strength is ensured even in a swelled state.

Due to its high resistance to acids, alkalis, organic solutions etc., **PolyproofX[®] 1** offers a wide spectrum of possible applications (sewage treatment plants, bio-gas plants, rain water overflow basins, liquid manure bins etc.). On contact with water, a swelling capacity of up to 400 times its volume is achieved. The sealing effect is attained due to the linearly increasing swelling pressure.

PolyproofX[®] 1 is particularly suited to sealing expansion joints. In its installed state, no considerable shrinkage is possible. This can take place only with the exhaustion of the surrounding air. The impermeability of the building element in areas of varying ground-water levels is guaranteed.

GENERAL CHARACTERISTICS

- _ Profil: 20 x 5 mm pimple profile
20 x 10 mm pimple profile
20 x 2 mm flat strip
20 x 20 mm square profile
30 x 30 mm square profile
Ø 30 mm round profile
30 x 30 mm cavity profile
- _ Surface: smooth
- _ Consistency: plastic
- _ Colour: blue
- _ Swelling: up to approx 400% of volume

ADVANTAGES

- _ Delayed swelling
- _ Resistant material structure, thereby extremely high elasticity and ultimate tensile strength
- _ Suitable for use in areas of variable ground water levels
- _ Age-resistance, no embrittlement
- _ Suitable for use in salt water areas
- _ Can be used in construction joints and expansion joints
- _ Perfectly suited for "new to old" connections

PACKAGING / STORAGE

- _ Packing units:

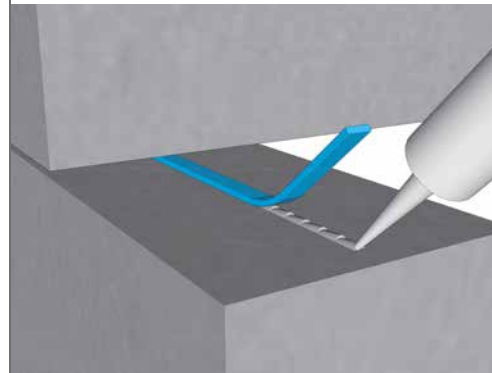
20 x 5 mm pimple profile:	7 x 20 m rolls / carton
20 x 10 mm pimple profile:	7 x 10 m rolls / carton
20 x 20 mm square profile:	8 x 5 m rolls / carton
30 x 30 mm square profile:	6 x 5 m rolls / carton
30 x 30 mm cavity profile:	6 x 5 m rolls / carton
- _ All other dimensions on request
- _ Storage: dry, protect against mechanical damage
- _ Temperature range: -30°C – +60°C





INSTALLATION

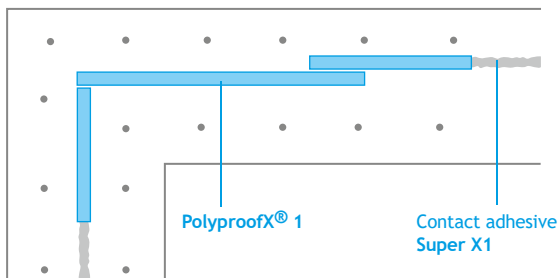
PolyproofX[®] 1 is affixed with contact adhesive **SuperX 1** or Polymer-swellingpaste **SX[®] 100** flush with the surface of the first concrete section in the middle of the joint between the reinforcements. During installation, checks are to be made to ensure that the **PolyproofX[®] 1** profile will remain in place once concreting begins. Lightly pushing the profile into the contact adhesive ensures the best results.



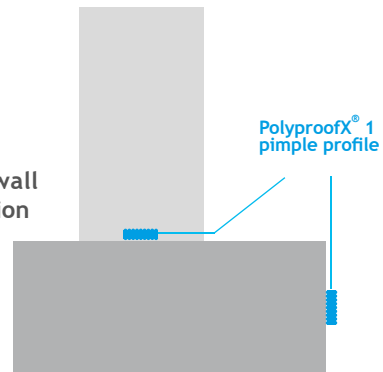
Contact adhesive
SuperX 1

CORNER JOINT / BUTT JOINT

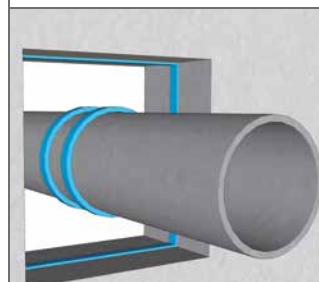
Bluntly affixed to each other at an angle of 90° /
Profile is stuck side by side, with an overlap of 10 cm



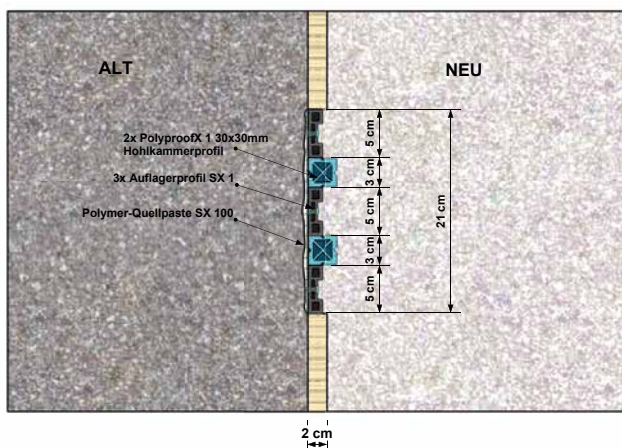
Floor / wall
connection



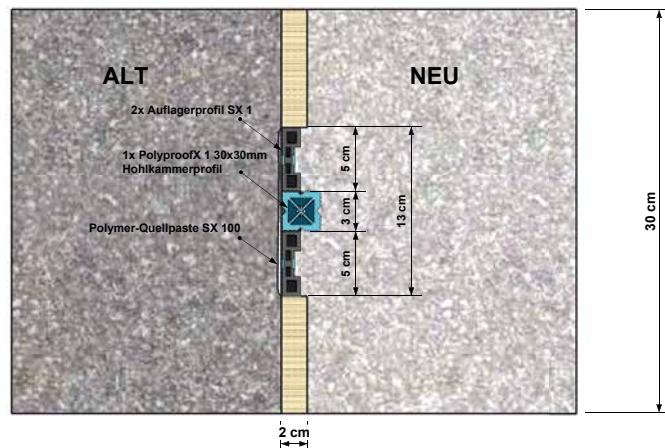
Floor / wall
connection



NEW to OLD (for slab thickness >40 cm)



NEW to OLD (for slab thickness ≥30 cm)



1

2

3

4

5

6

7

8



Swellproof[®] 1 / Swellproof[®] 1 SW is used to provide a waterproof seal between two concrete sections.

The innovative polymer-based hydrophilic water bar **Swellproof[®] 1 / Swellproof[®] 1 SW** is a thermoplastic elastomer and the effects of moisture cause it to swell. It is characterized by its excellent elasticity and high tensile strength.



The polymer-based hydrophilic water bar **Swellproof[®] 1** is used for sealing traditional construction joints between two concrete sections but also finds widespread use in various types of chute and prefabricated constructions as well as with regard to tunnel lining segments.

Due to its high resistance to acids, alkalis, organic solutions, etc., **Swellproof[®] 1** is suitable for a wide range of applications (sewage works, biogas plants, rainwater overflow basins, slurry pits, etc.).

The swelling action is also reversible. In an installed state, no major shrinkage is possible as this can only take place by expelling the surrounding air.

Building elements in areas with varying water tables are guaranteed a water-tight seal. **Swellproof[®] 1 SW** has been especially developed for salt water. Special, hydrophilic polymers also ensure a controlled swelling process under salt water conditions.

GENERAL CHARACTERISTICS

_ Profile:	20 x 5 mm – flat strip profile 20 x 10 mm – flat strip profile
_ Surface:	smooth
_ Consistency:	elastic
_ Colour:	green
_ Swelling:	up to approx. 250% of volume
_ Temperature resistance range:	-30 °C/+60 °C

PACKAGING

20 x 5 mm	– 20 m flat strip profile	– carton of rolls: 7 rolls (140 m)
20 x 10 mm	– 10 m flat strip profile	– carton of rolls: 7 rolls (70 m)



bentoproof black

SODIUM-BENTONITE WATERSTOP



Bentoproof black is a technically well engineered and certified sodium-bentonite based swellable waterstop for sealing construction joints in reinforced concrete. On contact with water, the material changes from its solid state into a plastic compound, allowing it to penetrate the finest of cracks and cavities. Even after numerous wet/dry cycles, **Bentoproof black** remains fully functional.



ADVANTAGES

- _ Simple to integrate, no welding or overlapping of joints required
- _ Special applications possible (e.g. pipe ducts or blockouts)
- _ Self-reacting effect, it compensates for movement in the joints
- _ Ideal for 'new to old' connections – construction joints and contraction joints
- _ Delayed swelling action
- _ Can be used in areas of variable groundwater levels
- _ Suitable for drinking water

GENERAL FEATURES

- _ Profile: rectangular 20 x 25 mm
- _ Colour: black
- _ Consistency: plastic

Surface roughness must be compensated for by the application of a water-swellable paste, for example with **Polymer-Quellpaste SX® 100**.

The bentonite swelling strip **Bentoproof black** develops an expanding injective force on contact with water causing it to permeate all damaged areas in the surrounding surface. It can withstand a hydrostatic head of up to 50 m (5 bar). (Test Certificate).

As a result of its innovative design, the material suffers no adverse affects often caused by frost or dew.

PACKAGE QUANTITIES

- _ Packing unit: a) 8 x 5 m rolls
(40 lin. m / carton)
b) 12 x 8 m rolls
(96 lin. m / carton)
- _ Pallet: a) 720 lin. m
b) 1728 lin. m

1

2

3

4

5

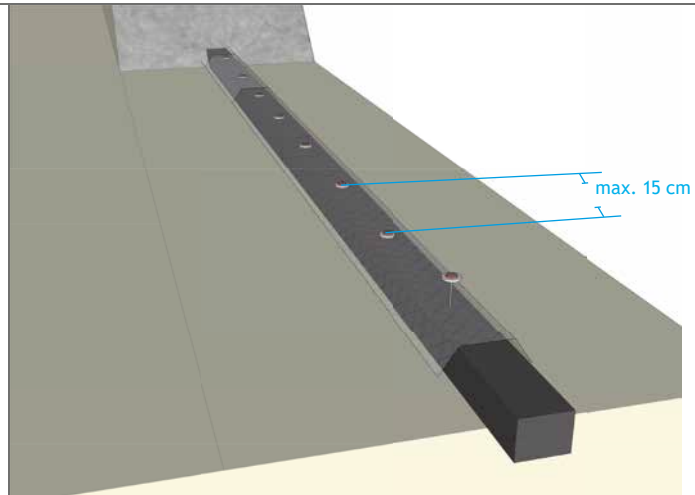
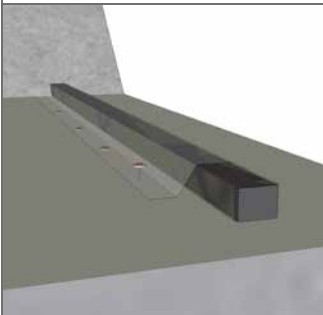
6

7

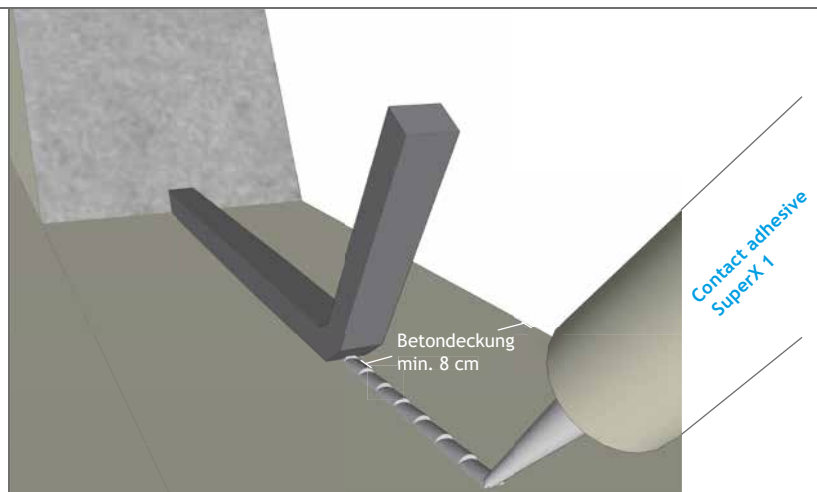
8



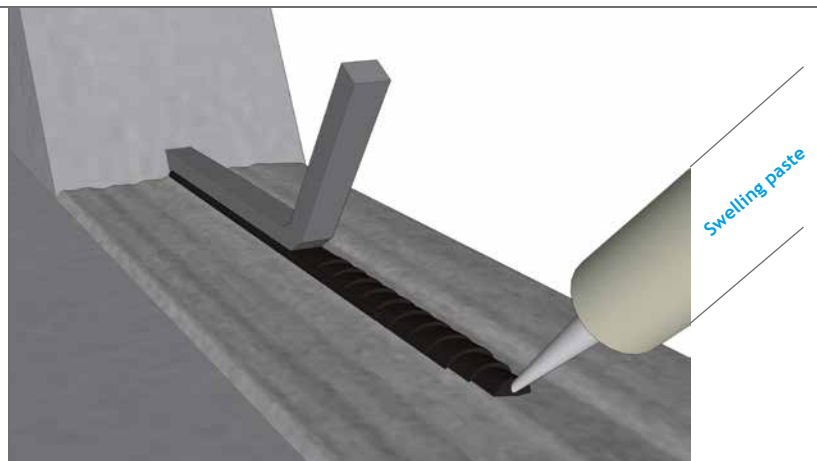
Bentoproof black and **Bentoproof black PLUS** are either nailed, riveted or screwed at approx. 15 cm intervals to the concrete substrate using a fixing mesh. Sections are jointed end to end.

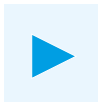


Alternatively, a flush fixture can also be achieved using our **contact adhesive SuperX1**.



If the surface is extremely rough or uneven, it is recommended to fix the swelling strip with a water swelling paste, for example with Polymer-Quellpaste SX® 100.

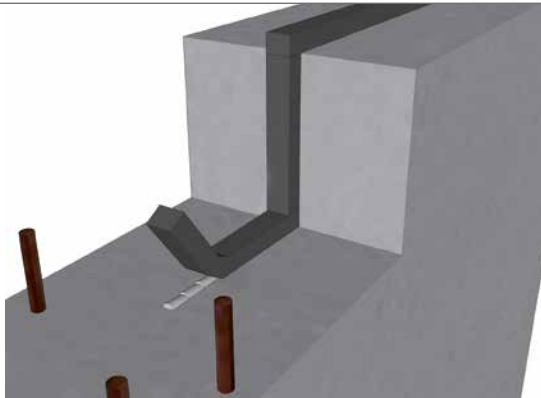




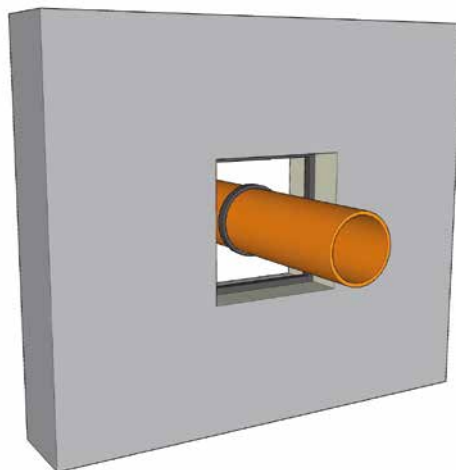
bentoproof black

ASSEMBLY

Installation situations



Staggered



Grommeting / pipe clearance

- _ The surface must be smooth and free of any loose particles
- _ **Bentoproof black** and **Bentoproof black PLUS** must be secured with a flush contact to the concrete substrate
- _ The distance between fixing points is determined by the concrete surface
- _ Sections are jointed end to end.
- _ The minimal covering of concrete must be at least 8 to 10 cm on all sides
- _ Installation is carried out in the middle of the joint between the reinforcements. This ensures that the necessary expansion and sealing effect can be achieved.

1

2

3

4

5

6

7

8

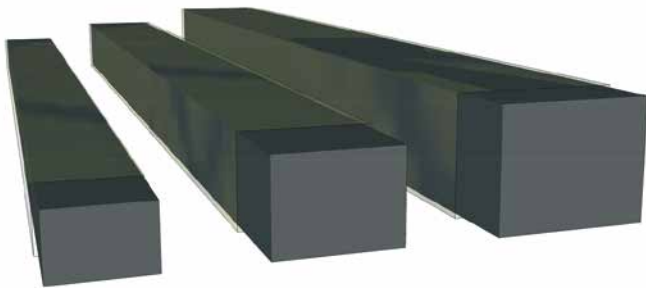
bentoproof black plus

SODIUM-BENTONITE WATERSTOP
WITH PROTECTIVE COATING



Bentoproof black PLUS is a technically perfected, sodium-bentonite swellable waterstop with a protective coating and used for sealing construction joints in concrete structures and reinforced concrete structures.

The protective coating on **Bentoproof black PLUS** reliably prevents premature swelling. Installation may take place regardless of weather conditions. The concrete's setting process causes the protective coating to disintegrate.



ADVANTAGES

- _ Simple to install, no welding or overlapping of sections necessary
- _ Simple corner configuration
- _ Special applications possible (e.g. pipe ducts or blockouts)
- _ Self-reacting effect, responds to the movements of the joint
- _ Perfectly suited for “new to old” connections – construction joints and contraction joints
- _ Long, delayed swelling action
- _ Can be used in areas with variations in groundwater levels
- _ Suitable for drinking water





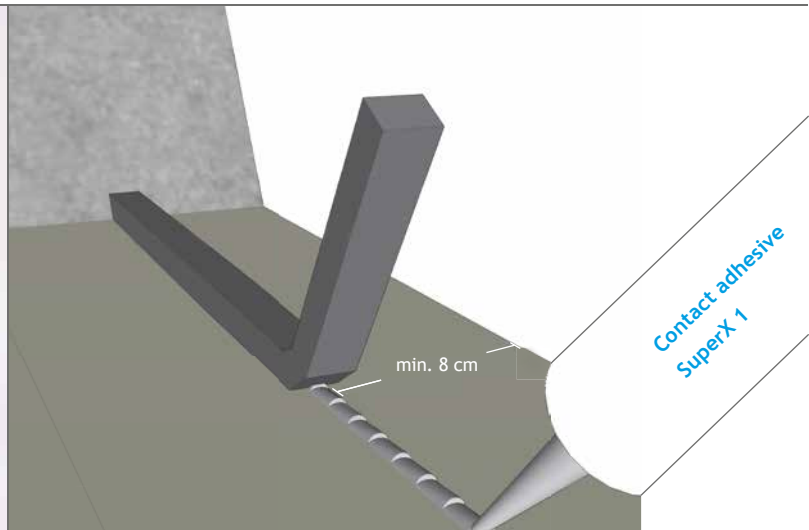
CONTACT ADHESIVE SUPERX 1

1-Component Adhesive and Sealing Compound

APPLICATIONS

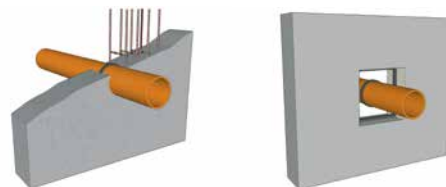
Contact Adhesive SuperX 1 is a high quality, highly elastic, multi-purpose adhesive and sealing compound. It is suitable for bonding swellable waterstops to concrete and steel, for grouting purposes in sanitation areas, for connecting joints in construction, for sealing glass, for joints in body work and container construction, for PS & PU foam panels, for wood constructions, for plastic sidings and for aluminium profiles.

The **Contact Adhesive SuperX 1** is suitable for both wet and dry surfaces.



METHOD OF APPLICATION

The compound is applied using either a hand gun or a pressurized gun to a clean, oil and dust free surface. For adhesive applications the contact adhesive is applied as a continuous bead. The contents of one cartridge are adequate for 8 to 10 linear meter swellable waterstops.



Contact Adhesive SuperX 1 used to affix swellable waterstops in pipe duct sections.

STORAGE LIFE

At least 12 months if unopened, kept originally packed and stored in temperatures of between +5°C and +25°C.

1

2

3

4

5

6

7

8

polymer-quellpaste SX[®] 100

SWELLABLE, SINGLE COMPONENT
ADHESIVE AND SEALING COMPOUND



Polymer-Quellpaste SX[®] 100 is particularly well-suited to bonding swellable waterstops in construction joints, for levelling concrete surfaces and for sealing construction joints and kicker joints. **Polymer-Quellpaste SX[®] 100** is a high-quality, firm, rapid hardening, single component swellable adhesive and sealing compound with a modified polymer base.

Polymer-Quellpaste SX[®] 100 distinguishes itself with its high levels of elasticity, firmness and excellent bonding properties. Its ability to expand on contact with water is achieved due to the material's chemical composition. Its cohesive properties are just as good on slightly damp surfaces as on dry ones.

FUNCTION

- _ Sealing of construction joints
- _ Connection between concrete and swellable waterstops
- _ Sealing of cable and pipe conduits
- _ Levelling of concrete surfaces
- _ Bonding the projecting ends of bentonite mats/geotextiles
- _ Suitable for vertical and overhead application

PACKAGING

- _ 290 ml – cartridge carton:
12 cartridges
- _ 600 ml – tubular bag:
12 tubular bags

Polymer-Quellpaste SX[®] 100 has a minimum storage life of 6 months if kept unopened and in its original packaging at temperatures of + 5°C to + 25°C.





GENERAL CHARACTERISTICS

_ Colour:	white
_ Environmental compatibility:	free from solvents, isocyanates, PVC, and silicone
	Neutral odour
_ Shore hardness (Shore A):	Shore A 25
_ Temperature resistance:	- 40°C / + 100°C (after hardening)
_ Skin formation after:	approx. 10 minutes
_ Hard dry::	1.5 mm in 24 hrs



METHOD OF APPLICATION

Polymer-Quellpaste SX[®] 100 is applied directly from the cartridge/tubular bag to the surface using either a spatula or a cartridge gun. The surface to which the paste is being applied should be firm, sustainable, clean and free of loose debris.

Opened containers should be used as quickly as possible. Storing and working with **Polymer-Quellpaste SX[®] 100** is trouble free as the paste is neither combustible nor toxic. The working temperature of **Polymer-Quellpaste SX[®] 100** lies between +5°C and +40°C, or between + 1°C / + 30°C (building component temperature).

Polymer-Quellpaste SX[®] 100 is to be protected from all forms of moisture when not in a fully installed state otherwise premature swelling will occur.

1

2

3

4

5

6

7

8

clamp joint profile SX®

HOLLOW COMPRESSION STRIP
FOR SEALING EXPANSION JOINTS



Clamp Joint Profile SX® is used for the post-construction sealing of expansion joints. The strip's special form enables it to be fitted quickly and securely in expansion joints and prevents the strip from being pushed back out of the joint as a result of back pressure from in-situ water.

Thanks to the strip's cavities, its installation can be carried out quickly, reliably and without major effort. During insertion, the strip's cross ribs rest lightly against the centre bar, back pressure then leads to the cross ribs being pushed outwards which in turn causes the strip to be jammed into the joint.

FUNCTION

The size of **Clamp Joint Profile SX®** to be used is determined by the width of the joint to be sealed and the strip is driven into the joint under compression. Before this, the adhesive sealant **Polymer-Quellpaste SX® 100** is applied in snaking fashion to the joint's flanks.

Due to the strip's tapered front part, the **Polymer-Quellpaste SX® 100** sealant is distributed along the joint flank between the strip and the flank and accumulates in the front knuckle area of the strip. This results in the **Polymer-Quellpaste SX® 100** securing the strip firmly in place and at the same time sealing the joint. Any risk of leakage is as a result eliminated.

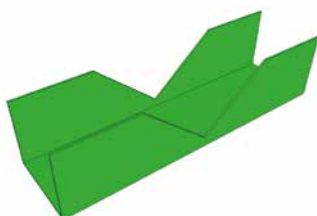
Clamp Joint Profile SX® 20/25
for joint widths of 20 to 25 mm



Clamp Joint Profile SX® 30/35
for joint widths of 30 to 35 mm



Clamp Joint Profile SX® 40/45
for joint widths of 40 to 45 mm



ADVANTAGES

- _ Simple and quick installation
- _ Secure position in the joint → barbed hook effect
- _ Follows the movements of the joint when opening & closing
- _ Resistant to age, no brittleness
- _ Excellent resistance to:
 - UV, ozone, weathering and light – as well as acids, bases, ketones and alcohols
- _ Corner formations can be prepared on site with a mitre cutting tool
- _ Butt joints and corner connections are glued together using a special instant adhesive for elastomers



clamp joint profile SX®

HOLLOW COMPRESSION STRIP
FOR SEALING EXPANSION JOINTS

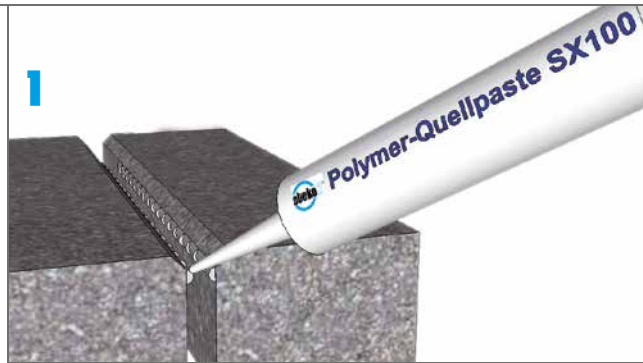
GENERAL CHARACTERISTICS

_ Profile:	Clamp Joint Profile SX® 20/25	Width: 36 mm	Height: 35 mm	Length: 10 m
	Clamp Joint Profile SX® 30/35	Width: 46 mm	Height: 45 mm	Length: 5.80 m
	Clamp Joint Profile SX® 40/45	Width: 56 mm	Height: 55 mm	Length: 5.80 m
_ Colour:	black			
_ Hardness:	60 – 70° Shore A			
_ Material:	EPDM (Ethylene-Propylene-Diene-Monomer)			

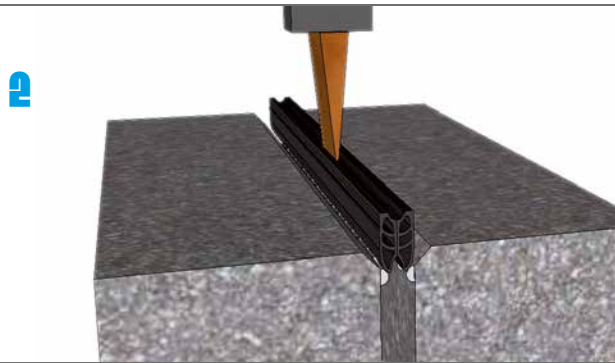
PACKAGING

_ Clamp Joint Profile SX® 20/25	10 m rolls, 6 rolls per carton
_ Clamp Joint Profile SX® 30/35	5.80 m - strips
_ Clamp Joint Profile SX® 40/45	5.80 m - strips

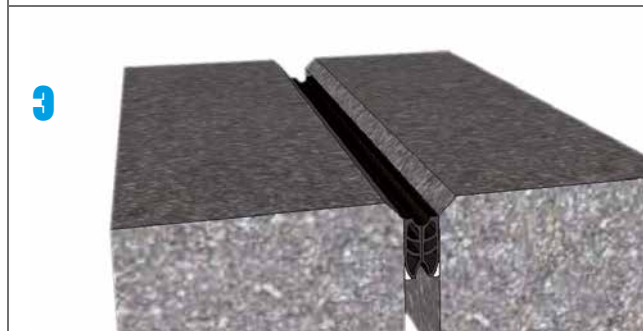
Clamp Joint Profile SX® must be stored in a dry place and protected against mechanical damage.



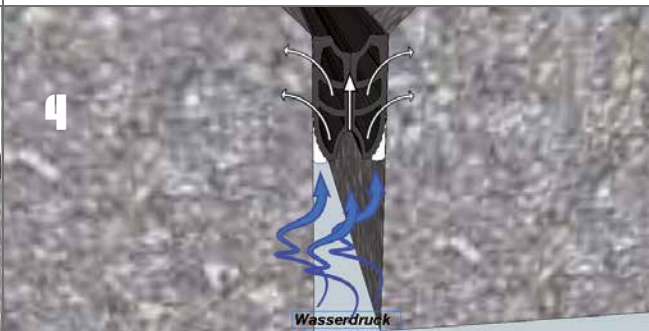
The joint flanks must be secure, clean, dry and have no splintering. If necessary, a re-profiling of the joint flanks must be carried out before inserting the **Clamp Joint Profile SX®**.
Once the joint flanks have been cleaned, a snaking application of **Polymer-Quellpaste SX® 100** sealant is applied to both flanks.



The size of **Clamp Joint Profile SX®** to be used is determined by the width of the joint to be sealed and the strip is driven into the joint under compression using a wedge-shaped tool.



The **Clamp Joint Profile SX®** must be flush with the bevelled edge.



1

2

3

4

5

6

7

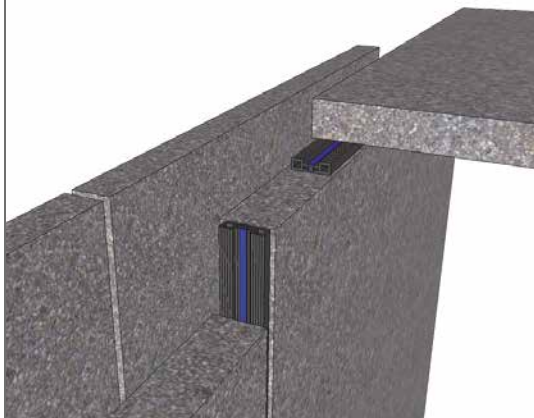
8

Bearing profile SX[®] 1

COMPRESSION & SWELLING STRIP FOR
SEALING PREFABRICATED CONCRETE JOINTS



The **Bearing profile SX[®] 1** is a combined compression & swellable waterstop for sealing prefabricated concrete joints. The compression seals positioned on either edge of the strip are compressed during installation giving rise to a restoring force on the joint flanks. The centrally positioned, chemically swelling strip functions as an additional seal. As soon as the swellable strip comes into contact with water, swelling occurs which seals the joint reliably and permanently.



FUNCTION

The **Bearing profile SX[®] 1** can be pre-installed onto the prefabricated element with the flat side facing the prefab concrete part. On the building site, the prefab concrete part is simply flange-mounted/screwed/laid on to the existing construction with the compression seals compressed to the height of the swellable strip. With regard to larger supporting loads, special supports must be incorporated to bear the weight.

GENERAL CHARACTERISTICS

- _ Element length: **25 m**
- _ Width: **48 mm**
- _ Height: **15 mm outer part, 10 mm inner part**
- _ Colour: **black: compression seal, blue: chem. swelling strip**
- _ Hardness: **approx. 45° + / - 5° Shore A**
- _ Temperature resistance: **30 °C / + 60 °C**
- _ Swelling effect: **up to approx. 400% volume**

PACKAGING

- _ **25 m – roll**
- _ Carton: **5 rolls (25 m/roll) = 125 m**

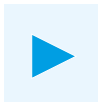
Bearing profile SX[®] 1 must be stored in a dry place and protected against mechanical damage.

ASSEMBLY

Bearing profile SX[®] 1 is fixed to the middle of the joint of the prefab component with **Polymer-Quellpaste SX[®] 100** sealant or **SuperX 1** adhesive. During installation, care must be taken to ensure that the **Bearing profile SX[®] 1** is securely fixed in position. Lightly pressing the strip into the sealant gives the best sealing results. Any unevenness can be levelled out with the **Polymer-Quellpaste SX[®] 100**.

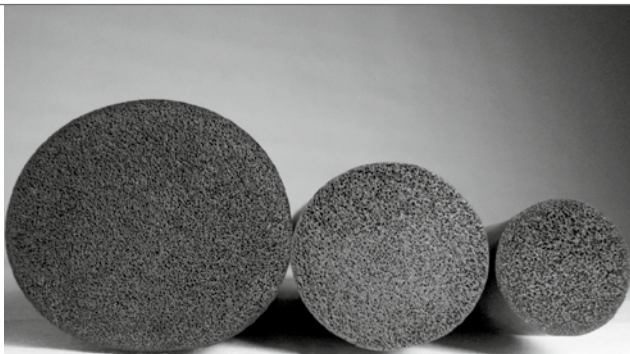
A special mitre cutting tool is used to form corners and as a result those can be created without any problems on site.

At junctions, butt joints and connections, **Bearing profile SX[®] 1** is glued using a special adhesive for elastomers.



SX[®] impact profile

COMPRESSION SEAL



The **SX impact profile** is a compression seal with an elastomer base used for sealing joints. Due to its high resistance to weather, chemicals, the ozone and UV rays, the SX impact profile can even be used on joints that are openly exposed to weathering and chemical contamination.

The installation of the **SX impact profile** may take place regardless of weather conditions (excellent resistance to heat, performs well in low temperatures).

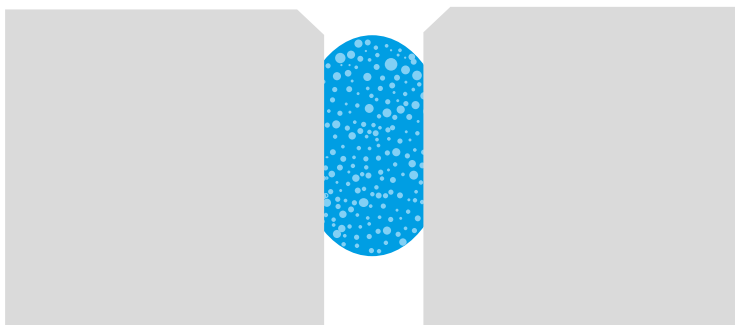
APPLICATION

The **SX impact profile** is used to seal construction joints and expansion joints and also as an end profile for joints.

The sealing effect brought about by the impact profile is due to the contact pressure on the joint's flanks. This arises due the restoring force applied to the flanks during distortion. Installation is carried out by hand or mechanically by means of a special chipping hammer.

In combination with **FlexproofX[®] 1 NV** (low viscosity), the **SX impact profile** is used to refurbish damaged expansion joints.

In this case, **SX impact profile** is used for plugging the **FlexproofX[®] 1**.



GENERAL CHARACTERISTICS

_ Profile / packing unit: ø 20 mm / roll length: 25 m
ø 25 mm / roll length: 25 m
ø 30 mm / roll length: 20 m
ø 35 mm / roll length: 20 m
ø 40 mm / roll length: 10 m
ø 45 mm / roll length: 10 m
ø 50 mm / roll length: 10 m
Further dimensions / profiles on request

_ Surface: smooth
_ Consistency: closed cell EPDM foam
_ Colour: black
_ Storage: dry, protect against mechanical damage
_ Temperature range: -30°C – +60°C

1

2

3

4

5

6

7

8



1 Pre-applied active waterproofing membrane

Item Nr.	Product Name	PU	WT. (kg)		Unit
			gross	net*	
30920	Polyfleece SX 1000 roll 20 m b=1.0 m	20 sqm	27.0	27.0	sqm
30921	Polyfleece SX 1000 Wall roll 20 m b=1.0 m	20 sqm	31.6	31.6	sqm
30910	Polyfleece SX 1000 roll 10 m b=1.0 m	10 sqm	13.5	13.5s	qm
30913	Polyfleece SX 1000 roll 20 m b=0.3 m	20 m	8.2	8.2	m
30972	Polyfleece SX 1000 Radon roll 20 m b=1.5 m	30 sqm	43.0	43.0	sqm
22149	Polyfleece SX 1000 adhesive tape 75 mm l=20 m	1 roll		0.55	roll
30960	Polyfleece SX 1000 adhesive (15 kg bucket)	15 kg	15.6	15.0	kg
30840	2K-sealing adhesive SX1 10 kg set	10 kg	10.4	10.0	kg
30850	2K-sealing adhesive SX1 20 kg set	20 kg	20.8	20.0	kg



2 Single-component sealant mass

30601-15-SV	FlexproofX 1 (15 kg bucket)	15 kg	15.6	15.0	kg
30601-26-SV	FlexproofX 1 (26 kg bucket)	26 kg	28.0	26.0	kg
30602	FlexproofX 1 NV (7.5 kg bucket)	7.5 kg	7.9	7.5	kg
30610	FlexproofX 1 1K-cartridge 290 ml	12 pcs	6.4	6.3	pcs
30610-600	FlexproofX 1 tubular bag 600 ml firm	12 pcs	10.6	10.4	pcs
30611	FlexproofX 1 tubular bag 600 ml sprayable	12 pcs	11.0	10.8	pcs
30617	FlexproofX 1 UV cartridge 290 ml	12 pcs	6.2	6.0	pcs
30663	Flex4all cartridge 290 ml	12 pcs	6.2	6.0	pcs
30613	FlexproofX 1 reinforcement fabric 250 l=50 m	50 m		2.0	m
30614	FlexproofX 1 reinforcement fabric 1000 l=50 m	50 m		8.1	m
30625	FlexproofX 1 spray gun	1 pcs		1.65	pcs
30625-19(5)	FlexproofX 1 spray nozzle 5 mm	1 pcs		0.1	pcs
30625-20	FlexproofX 1 diffuser nozzle	10 pcs	0.1		pcs
30625-22	Dry lubricating film for FlexproofX 1 spray gun	1 pcs		0.4	pcs

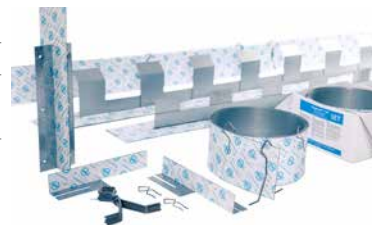




list of articles

3 Coated metal waterstops

Item Nr.	Product Name	PU	WT. (kg)		Unit
			gross	net*	
13000	EasyproofX 1 (2 m)	30 m	25.0	21.0	m
13004	EasyproofX 1 10 (2 m)	30 m	15.0	19.0	m
13006	EasyproofX 1 set roll (6 m), 6 omega fixing clips, 2 push brackets	1 set	4.8		set
13012	EasyproofX 1 set roll (2x6 m), 8 fixing brackets, 4 push brackets	1 set	10.0		set
13200	AquaproofX 1 (2 m)	30 m	25.0	21.0	m
13201	AquaproofX 1 10 (2 m)	30 m	19.0	15.0	m
13203	AquaproofX 1 10 set roll (6 m), 6 omega fix. brackets, 2 push brack.	1 set	3.9		set
13206	AquaproofX 1 set roll (6 m), 6 omega fix. clips, 2 push brackets	1 set	4.4		set
13212	AquaproofX 1 set roll (2x6 m), 8 fixing brackets, 4 push brackets	1 set	9.4		set
13216-U	AquaproofX1 90° corner universal	1 pcs	0.4		pcs
13230	AquaproofX 1 SRE pre-fab wall-joint 24/29	1 m		1.2	m
13231	AquaproofX 1 SRE pre-fab wall-joint 30/35	1 m		1.2	m
13232	AquaproofX 1 SRE pre-fab corner 24/29	1 m		1.2	m
13233	AquaproofX 1 SRE pre-fab corner 30/35	1 m		1.2	m
13235	AquaproofX 1 SRE insitu-concrete wall 24/29	1 m		1.2	m
13236	AquaproofX 1 SRE insitu-concrete wall 30/35	1 m		1.2	m
13100	MegaproofX 1 (2 m)	30 m	25.0	21.0	m
13101	MegaproofX 1 10 (2 m)	30 m	19.0	15.0	m
13103	MegaproofX 1 roll (6 m), incl. 2 push brackets	6 m	4.0	3.8	m
13106	MegaproofX 1 roll (6 m), incl. 2 push brackets	6 m	4.8	4.6	m
13112	MegaproofX 1 set roll (2 x 6m), incl. 8 fixing brackets, 4 push brackets	1 Set	9.4		Set
13116-U	MegaproofX 1 90° corner universal	1 St	0.4		Stck
13130	MegaproofX 1 SRE pre-fab wall - joint 24/29	1 m		1.2	m
13131	MegaproofX 1 SRE pre-fab wall - joint 30/35	1 m		1.2	m
13132	MegaproofX 1 SRE pre-fab wall - corner 24/29	1 m		1.2	m
13133	MegaproofX 1 SRE pre-fab wall - corner 30/35	1 m		1.2	m
13135	MegaproofX 1 SRE insitu concrete 24/29	1 m		1.2	m
13136	MegaproofX 1 SRE insitu concrete 30/35	1 m		1.2	m
13001-1	Fixing bracket Omega, height 155 mm	100 pcs	4.2		pcs
13002	Push bracket	15 pcs	0.1		pcs
13997	Connector dilatation joint profile	1 pcs		0.1	pcs
13998	Metal waterstop jointing bracket 200x140 mm	40 pcs	5.8	5.6	pcs
13999	Metal waterstop fixing bracket 300x100x50 mm	40 pcs	5.4		pcs



* a. gross weight = with packaging
b. net weight = without packaging



4 Injection hose systems

Item Nr.	Product Name	PU	WT. (kg)		Unit
			gross	net*	
10100	Waterproof X1 injection hose l=120 m	120 m	13.5	12.0	m
10111	Waterproof X1 assembled - special length			0.2	m
11100	Injection hose SX 1 l=120 m	120 m	12.5	11.0	m
11111	WaterproofX 100 injection hose l=120 m	120 m	10.8	9.3	m
11112	WaterproofX 100 assembled - special length			0.18	m
11115	WaterproofX 100 FSI injection hose for ridge-roof injection l=60 m	60 m	14.0	13.0	m
11170	WPX 100 set standard 40 m	1 set	7.8	7.2	set
11171	WPX 100 set prefab 40 m	1 set	7.6	7.0	set
11172	WPX 100 set plus 40 m	1 set	11.0	10.2	set
11173	WPX 100 set light 40 m	1 set	6.2		set
30106-8	Bentoproof Injekt PLUS set 5x8 m	1 set	31.8	31.0	set
30740	PolyproofX 1 Injekt l=120 m	120 m	46.0	40.0	m
30741	PolyproofX 1 Injekt clamp 22 mm	100 pcs	1.9	1.8	pcs
30745-8	PolyproofX 1 Injekt set 5x8 m	1 set	19.7	18.9	set
10300	Varioclix	30 pcs	0.9	0.8	pcs
10301	Varioclix with metal strip (foam-pad grey)	30 pcs	2.0	1.8	pcs
10302	Varioclix with metal strip (foam-pad black)	30 pcs	2.0	1.8	pcs
10307	Varioclix with bottom attachement (foam-pad grey), single concr.cov.	30 pcs	5.2	4.5	pcs
10308	Varioclix with bottom attachement (foam-pad black), single concr.cov.	30 pcs	5.2	4.5	pcs
10097	PVC hose white l=50 cm	1 pcs		0.1	pcs
10098	PVC hose blue l=50 cm	1 pcs		0.1	pcs
10099	PVC hose white l=50 m	50 m	5.4	5.1	m
10102	PVC hose blue l=50 m	50 m	5.4	5.1	m
10122	PVC hose green l=50 m	50 m	5.4	5.1	m
10123	PVC hose red l=50 m	50 m	5.4	5.1	m
10150	PVC hose red l=50 cm	1 pcs		0.1	pcs
10151	PVC hose green l=50 cm	1 pcs		0.1	pcs
10101	Hose connector	100 pcs	0.3		pcs
10103	Plug	100 pcs	0.1		pcs
10106	Clamp 13 mm	100 pcs	1.4		pcs
10108	Stecki fixing clip	100 pcs	0.3		pcs
10109	Hammer drill 5 mm	1 pcs		0.1	pcs
10112	Hose clamp	100 pcs	0.6		pcs
10115	Press nipple M8	100 pcs	0.4		pcs
10116	Drive-in anchor 5x30 mm	100 pcs	0.3		pcs
10117	Press nipple M8/55 mm tapered nipple	100 pcs	2.3	2.2	pcs
10119	Fixing mesh X 1 l=100 cm	40 pcs	3.2		pcs
11116	WaterproofX 100 FSI clamp 22 mm	100 pcs	1.9	1.8	pcs
22014	Mounting clip X1 for fixing to sealing strip	300 pcs	1.2	1.2	pcs





list of articles

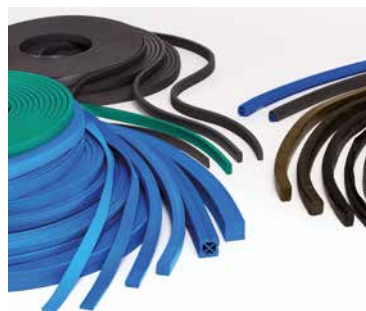
5 Injection material & injection pumps

Item Nr.	Product Name	PU	WT. (kg)		Unit
			gross	net*	
71143	PUR injection resin (25.5 kg)	25.2 kg	25.5	25.2	kg
75141	EP resin (13 kg)	13 kg	13.5	13.0	kg
74151	Foam-stop (10 kg)	10 kg	10.5	10.0	kg
43203	Ultrafine cement	27.38 kg	27.6	27.4	kg
72000	Polymer-gel matrix SX T		10.524 kg	11.2	10.5 kg
72100	Polymer-gel matrix SX H		26.875 kg	28.0	26.9 kg
71000	cleaner A PLUS (10 kg)	10 kg	10.6	10.0	kg
60002	SX Renovation packer Ø 30 - l=80 mm	1 pcs		0.06	pcs
60100	Fibreglass-drill packer Ø13 mm with tapered nipple 115 mm	100 pcs	3.2		pcs
60110	Fibreglass-day packer Ø13 mm with tapered nipple 115 mm	100 pcs	3.2		pcs
70010	Cleaner B (10 kg)	10 kg	10.5	10.0	kg
90010	SX 10 hand lever piston pump	1 pcs	26.8	25.0	pcs
90200	SX 200 membrane pump incl. material hose 5 m	1 pcs	26.8	25.0	pcs



6 Hydrophilic water stops

30308	Bentoproof black 20x25 mm l=5 m	40 m	30.0	28.5	m
30317	Bentoproof black PLUS 15x20 mm l=5 m	40 m	30.3	28.8	m
30318	Bentoproof black PLUS 20x25 mm l=5 m	40 m	30.6	29.1	m
30705	PolyproofX 1 nub profile 20x5 mm l=20 m	140 m	15.6	14.5	m
30710	PolyproofX 1 nub profile 20x10 mm l=10 m	70 m	16.5	15.9	m
30720	PolyproofX 1 square profile 20x20 mm l=5	40 m	19.1	18.3	m
30730	PolyproofX 1 square profile 30x30 mm l=5	30 m	33.8	33.0	m
30735	PolyproofX 1 30x30 mm hollow-chamber nub profile l=5 m	30 m	26.0	25.2	m
30215	SwellproofX 1 20x5 mm	140 m	14.6	14.0	m
30216	SwellproofX 1 20x10 mm	70 m	8.3	7.7	m
30307	Contact adhesive Super X1 cartridge 290 ml	12 pcs	6.4	6.3	pcs
30450	Polymer-Swellingpaste SX 100 cartridge 290 ml	12 pcs	6.4	6.3	pcs
30302	Fixing mesh for swelling tape l=100 cm	40 pcs	2.6	2.6	pcs



7 Joint sealing profiles

22520	SX insert profile Ø 20 mm l=25 m	25 m	4.6		m
22525	SX insert profile Ø 25 mm l=25 m	25 m	6.6		m
22530	SX insert profile Ø 30 mm l=20 m	20 m	6.4		m
22535	SX insert profile Ø 35 mm l=20 m	20 m	9.4		m
22541	SX insert profile Ø 40 mm l=10 m 20° ShA	10 m	6.4		m
22546	SX insert profile Ø 45 mm l=10 m 20° ShA	10 m	7.4		m
22551	SX insert profile Ø 50 mm l=10 m 20° ShA	10 m	8.4		m
22820	Clamping joint profile SX 20/25 l=10 m	10 m	4.3		m
22826	Clamping joint profile SX 30/35 l=5.8 m	5.8 m	3.6		m
22836	Clamping joint profile SX 40/45 l=5.8 m	5.8 m	5.8		m
30770	Compression bearing profile SX 1 45/15 mm l=25 m	25 m	10.4		m
22800	Clamping joint profile SX contact adhesive	1 pcs	0.05		pcs



* a. gross weight = with packaging
b. net weight = without packaging



ankox

sealing engineering

ankox GmbH sealing engineering

Blumenstraße 42/1
71106 Magstadt
Germany
Service number:
+49(0)7159 42 008 40
Email: export@ankox.de

www.ankox.de