

ankox

Firmengruppe

> *POLYFLEECE SX1000:* Waterproofing membrane with integral bond to concrete

1. *Sealing layer –*
2. *Sealing layer in form of hydrophilic, polymeric compound –*
3. *Integral bonding layer (fleece)*



Polyfleece SX1000 Wall

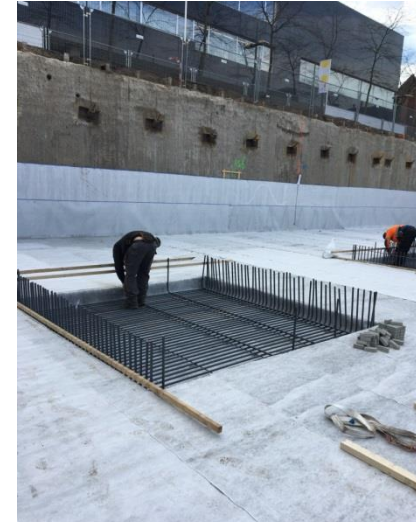
- Preferably used as additional waterproofing action for **white tank constructions**
- Polyfleece SX1000 – **system** incl. certified system components, consideration of owner/builder demands, professional planning, educated/certified installers, monitoring before/during/after installation incl. extensive documentation
- **CE**-certified in accordance with **DIN EN 13967**
- **Main unique selling points:**
 - 1.) due to integral bond no migration of water in between membrane and concrete even in case of a local mechanical damage
 - 2.) high crack bridging capability
 - 3.) hydrophilic, „self-healing“ function
 - 4.) easy to install due to high flexibility combined with high robustness
 - 5.) wide range of system components
- **Various international test reports issued by third party institutes** (KIWA, Vattenfall, MFPA)

References / experiences

Site Denmark



References / experiences



Site Netherlands: high waterpressure of 1.1bar

References / experiences

Site UK: in total 30.000m²



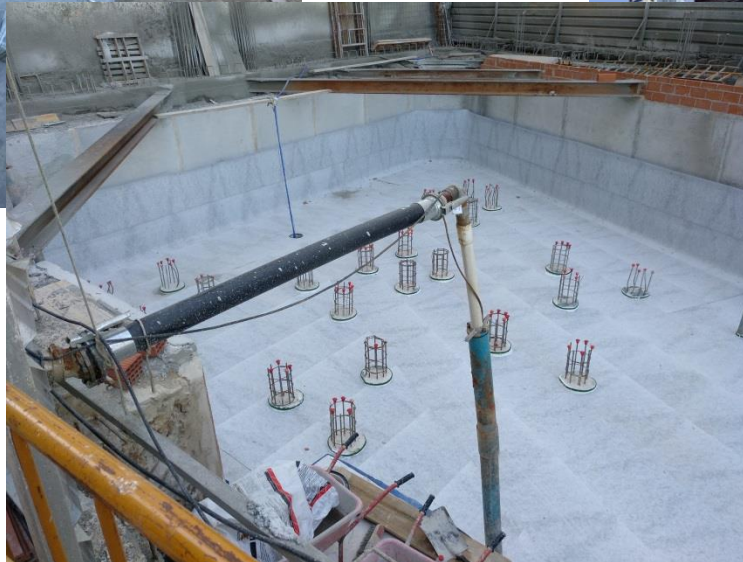
References / experiences

Prefab



References / experiences

International sites



Made in Germany



Polyfleece SX® 1000