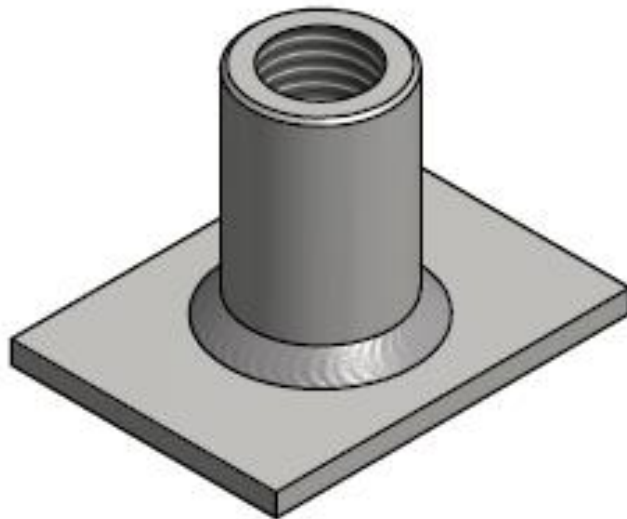


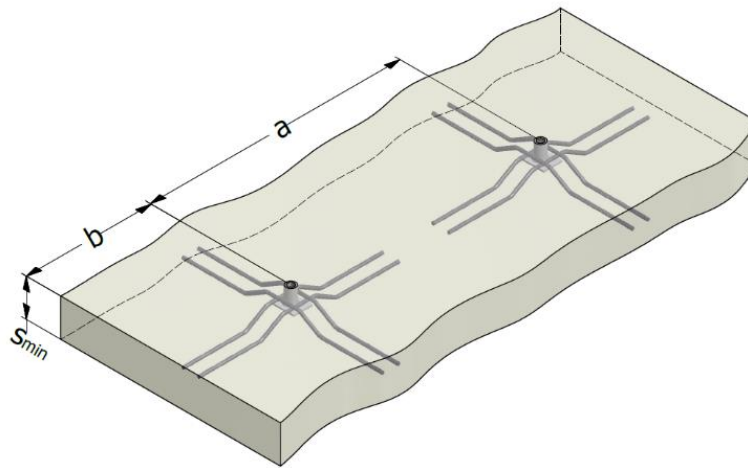
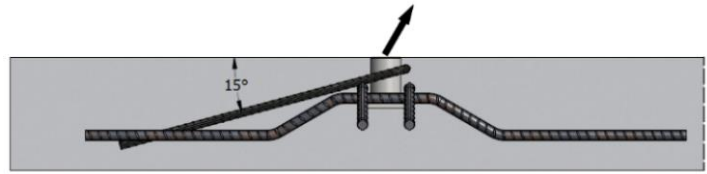
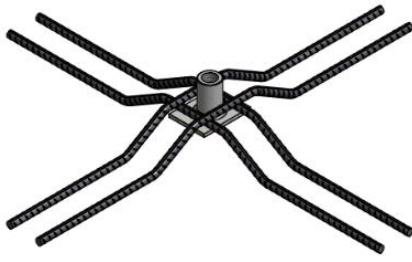
MOUNTING INSTRUCTIONS



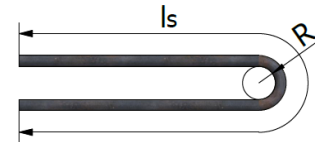
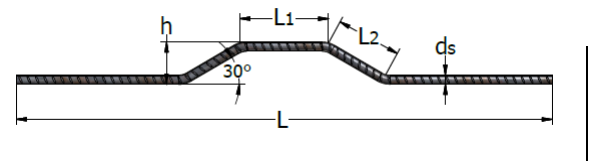
1D-HD - LIFTING SYSTEMS | HSP **LIFTING SOCKET WITH FOOTPLATE HEAVY DUTY**



LIFTING SOCKETS HSP – INSTALLATION AND REINFORCEMENTS

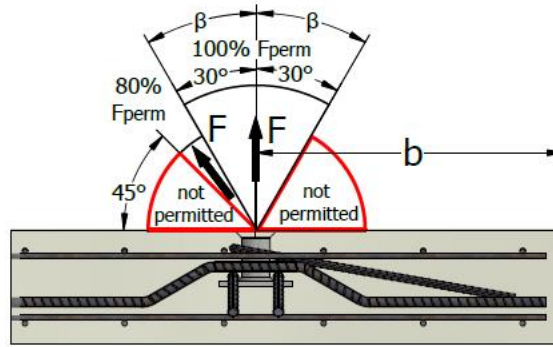
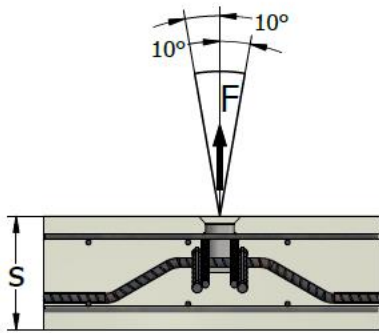


HSP M(Rd)	Load group	Minimum unit thickness	Anchor spacing	Edge distance	Mesh reinforcement
		Smin	a	b	
	[t]	[mm]	[mm]	[mm]	[mm ² /m]
12	1.3	100	500	250	188
16	2.5	120	820	410	188
20	4.0	150	1020	510	188
24	5.0	160	1300	650	188
30	7.5	200	1300	650	260



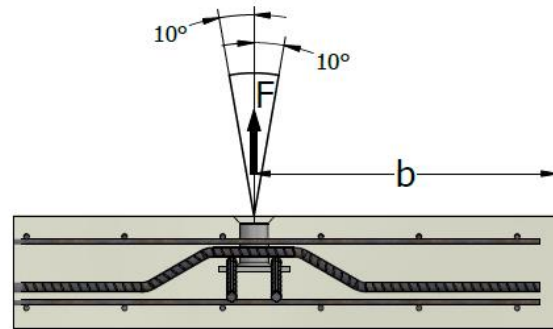
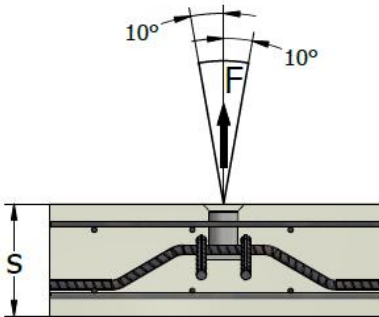
Note: The bend radius R will be determined according to EN 1992.
Additional reinforcement must be placed and secured on top of the plate anchor and in direct contact with the plate.
There must be two layers of mesh reinforcement.
Additional reinforcement must be placed crosswise in pairs.

HSP M(Rd)	Additional reinforcement						Axial load $\beta \leq 10^\circ$	Diagonal load $10^\circ \leq \beta \leq 45^\circ$	
							Load capacity $f_{cu} > 15 \text{ MPa}$	Load capacity $f_{cu} > 15 \text{ MPa}$	Angled pull reinforcement $\varnothing \times l_s$
	number [pcs]	d_s [mm]	L_1 [mm]	L_2 [mm]	h [mm]	L [mm]	[kN]	[kN]	[mm]
12	4	8	60	80	40	400	13	10.4	$\varnothing 10 \times 750$
16	4	10	90	110	55	620	25	20.0	$\varnothing 12 \times 1300$
20	4	12	110	110	55	800	40	32.0	$\varnothing 12 \times 1400$
24	4	16	140	120	60	1120	50	40.0	$\varnothing 16 \times 1500$
30	4	16	140	120	60	1220	75	60.0	$\varnothing 16 \times 1750$



Note: The bend radius R will be determined according to EN 1992.

Diagonal reinforcement must be placed in direct contact with the socket anchor.
 Always install diagonal reinforcement opposite the load direction.
 The dimensions in the illustrations are in [mm].



CONTACT



TERWA is the global supplier for precast and construction solutions with multiple offices around the world. With all our staff, partners and agents, we are happy to provide all construction and precast companies who work in the building industry with full service and 100% support.

TERWA CONSTRUCTION GROUP

Terwa Construction Netherlands (HQ)

Global Sales & Distribution
Kamerlingh Onneslaan 1-3
3401 MZ IJsselstein
The Netherlands
T +31-(0)30 699 13 29
F +31-(0)30 220 10 77
E info@terwa.com

Terwa Construction Central East Europe

Sales & Distribution
Strada Sânzieni
507075 Ghimbav
Romania
T +40 372 611 576
E info@terwa.com

Terwa Construction Poland

Sales & Distribution
Ul. Cicha 5 lok. 4
00-353 Warszawa
Poland
E info@terwa.com

Terwa Construction India & Middle East

Sales & Distribution
India
T +91 89 687 000 41
E info@terwa.com

Terwa Construction China

Sales & distribution
5F 504, No. 101 Chuanchang road
PRC, 200032, Shanghai
China
E info@terwa.com

ALL SPECIFICATIONS CAN BE CHANGED WITHOUT PREVIOUS NOTICE.

DISCLAIMER

Terwa B.V. is not liable for deviations due to wear of the products it has delivered. Neither is Terwa B.V. liable for damage due to inaccurate and/or improper handling and use of the products it has delivered and/or use of same for purposes other than those intended.

Terwa B.V.'s responsibility is furthermore limited in accordance with article 13 of the "Metaalunie" conditions, which are applicable for all Terwa B.V. deliveries. The user is responsible for ensuring compliance with all applicable copyright laws. Without limiting the rights under copyright, no part of this documentation may be reproduced, stored in or introduced into a retrieval system, or transmitted in any form or by any means (electronic, mechanical, photocopying, recording, or otherwise), or for any purpose, without the express written permission of Terwa B.V.