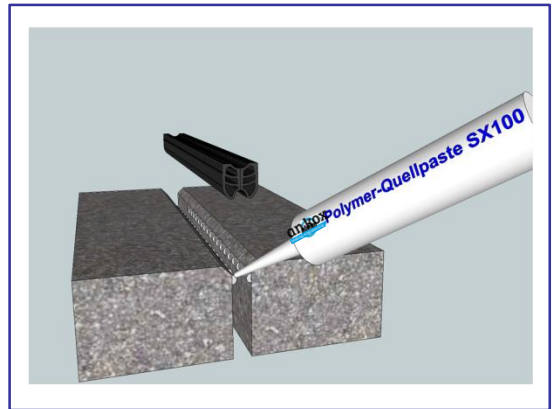
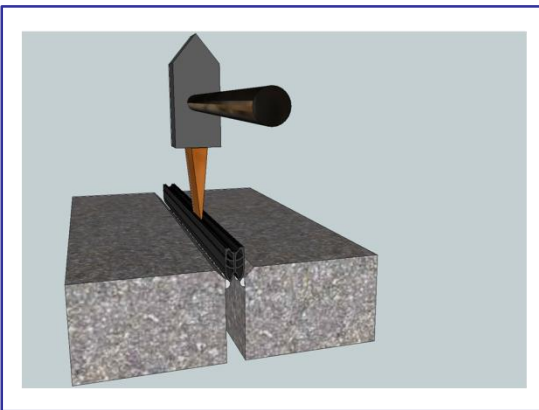


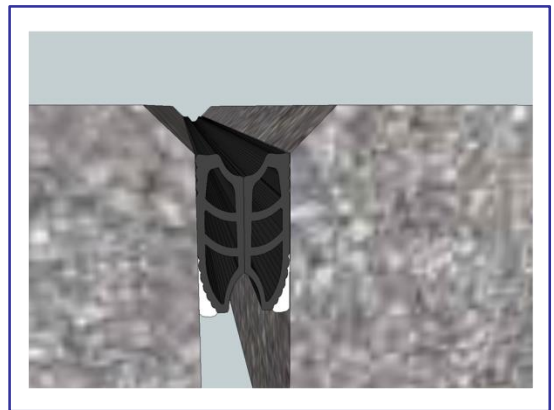
1. Clean flanks – flanks must newly be cut, or shaped when indicated



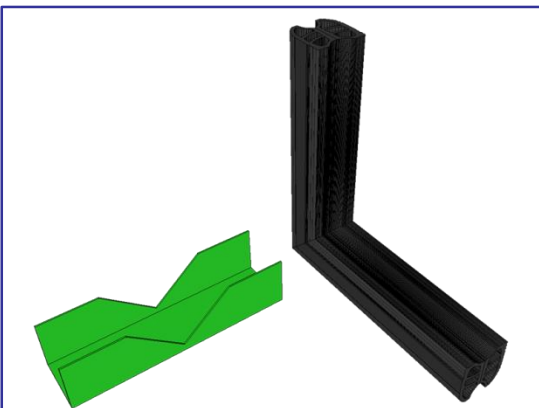
2. Installation of Polymer Swellingpaste SX® 100 on both flanks



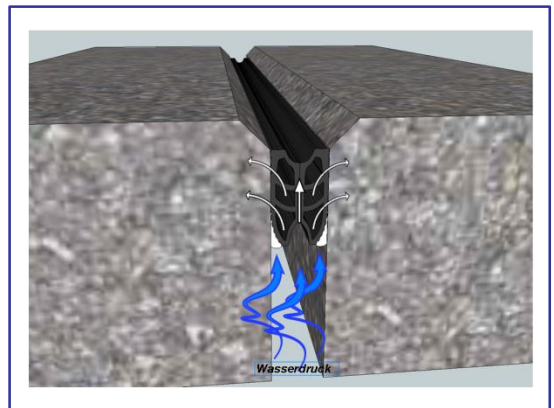
3. Centered installation of Clamp joint profile SX® under compression with a cotter pin



4. Completely installed Clamp joint profile SX®:
The profile must end at the lower edge of the chamber-bevel



5. Making of cornerelement with an especial cutting tool. The two parts are connected with an especial instant adhesive



6. Water from the backside activates the „barb-effect“ due to the especially designed ribs of Clamp joint profile SX®